

A few notes about PDF patterns. . . .

This PDF pattern prints on regular letter size paper (8.5" x 11").

Patterns containing larger pieces will need to be taped together before cutting out the fabric.

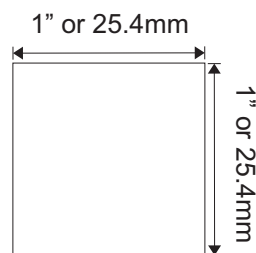
Be advised that this document needs to be printed to it's original scale. Please ensure that the printing options below are **not** selected.

Do Not: Rotate and Center, Fit to Page, Reduce to Fit or adjust the scale of this document.

Refer to the scale marker below to ensure that this copy is printed at the correct scale.

This PDF pattern is not licensed for commercial use and may not be shared, duplicated or distributed.

Designs by Jude, All RIGHTS RESERVED. Personal use only. Not licensed for commercial use.



Designs by Jude

www.fletcherpatterncompany.com



VDC Club Grace
Good Vibrations
for 16.5" RTB101 Dolls

Designed by
Tamara Casey

\$12.95



VDC Collaboration

Good Vibrations

For 16.5" RTB101 Dolls

Basic Instructions

You will get the most professional results by following a couple of recommendations.

- Use a ¼" seam allowance unless noted otherwise on the pattern piece or instructions. This seam allowance is already included in the dimensions of the pattern.
- Press the garment as you work through each step. Press seams open where applicable.
- In un-lined garments, finish raw edges with an over-lock or zigzag stitch.

Note: RST = Right Sides Together, WST = Wrong Sides Together.

Fabrics and Notions

Top: cotton, lightweight blends
Pants & Hat: cotton, lightweight denim, or similar
Vest: lightweight suede, polyester/spandex blend
Notions: 4/0 snap sets, single-sided iron on interfacing, fray check.

Bell Sleeve Top

1. Sew darts in the top front. Press darts to the side.
2. Sew darts in the top back. Press darts to the side.
3. Sew top front to top back at the shoulders.
4. Repeat the above three steps with the top lining.
5. Zigzag or serge armhole edge of the top lining.
6. Sew the top front lining to the top back lining at the side seams.
7. Run a gather stitch along sleeve caps. Pull the gathers to ease the sleeve to the armhole opening.
8. RST, pin the sleeves to the top and sew in place. Clip seams to reduce bulk.
9. Sew a narrow hem or surge each sleeve flounce.
10. Take a few clips into the rounded edge of each sleeve flounce.
11. RST, pin each flounce to the sleeves and sew in place. Press the seams up.
12. Sew the top front sections to the top back at the side seams.
13. Pin the top lining to the top with the right sides together.
14. Starting at the back, sew all the way around, leaving an opening to turn.
15. Clip and trim seams to reduce bulk, turn the top right side out, and press.
16. Hand finish the opening used to turn the top.
17. Fit to doll and mark placement for a snap.
18. Sew the snap in place.
19. RST, sew all around the bow, leaving an opening to turn it.
20. Clip and trim the seam allowance. Turn the bow right side out and press.
21. Tuck the raw edges of the opening in and tie a knot at the center.
22. Attach the bow to the top.

Bellbottom Pants

1. Sew the darts in the pant back sections. Press the darts to the side.
2. RST, sew the pocket lining to the pocket leaving the top and side unsewn.
3. Clip and trim the seam and turn the pocket right side out and press.
4. Topstitch the curved edge of the pocket.
5. Matching notches, pin the pockets to the pants front pieces and topstitch in place.
6. Baste the pockets to the pants front sections at the waist edge and side.
7. RST, sew the center front crotch seam. Clip seam and press open.

8. RST, sew the pants back pieces to the pants fronts at the side seams. Press the seam open.
9. Turn up each pant leg ¼” and press. Top stitch to hem.
10. Zigzag the raw edge of the left and right back openings.
11. RST, sew the pants' back crotch seam for the edge to the dot as indicated on the pattern.
12. RST, sew the front of the pants and back together at the inner thigh seam.
13. Make belt loops by folding one long edge of the belt loop piece in 1/8” and press. Topstitch one row close to the folded edge. Fold the other edge under to create the narrow belt loop and press. Add a second topstitch row close to the first. Trim the excess material from the wrong side of the strip. Cut the piece into six even pieces.
14. Pin each belt loop piece to the pants with the wrong side up. Position at the inner part of the front pocket, at the side seam, and centered over the back darts. Baste all six pieces in place. (These will be trimmed to fit and attached to the waistband later).
15. Zigzag the lower raw edge of the waistband lining.
16. With the right sides together, sew the waistband lining to the waistband along the top edge.
17. Topstitch the waistband near the seam.
18. RST, pin the waistband to the pants and sew it in place. Press the seam allowance up.
19. Fold the left back opening of the pants in and the waistband lining to the inside. Press, then topstitch the waistband near the seam and zig zag the right end on the waistband.
20. Fit to the doll and mark the placement for a snap.
21. Trim each belt loop, leaving enough length to fold under the top and attach to the waistband.
22. Add a drop of fray check to the raw edge of the belt loops and let dry before sewing in place.
23. Sew on the snap.

Baker Boy Hat

1. Before cutting the hat brim and hat band, I recommend using iron on interfacing to stabilize it.
2. RST sew the center back seam of the hat band and press the seam open.
3. RST, pin both brim pieces together and sew around the outer circle. Clip and trim seam.
4. Turn the brim right side out and press. Topstitch around the brim.
5. RST, matching the center of the brim to the center front of the band, pin in place, and sew.
6. Turn the band edge up ¼” and topstitch all the way around.
7. Prepare the hat crown by sewing three pieces together and then the other three pieces together. Clip and trim seams and press each one.
8. RST, sew all six sections together from one edge to the other. Clip and trim seam and press.
9. Run a gathering stitch around the crown. Pull the gathers gently to fit the hat band.
10. RST pin the hat crown to the hat brim.
11. Sew both pieces together, sewing in the round.
12. Trim seam and finish the edge with a zigzag stitch.

Open Front Fringe Vest

** fringe can be store bought or made by cutting a rectangle 7” x 5” and then cutting the fringe strips. **

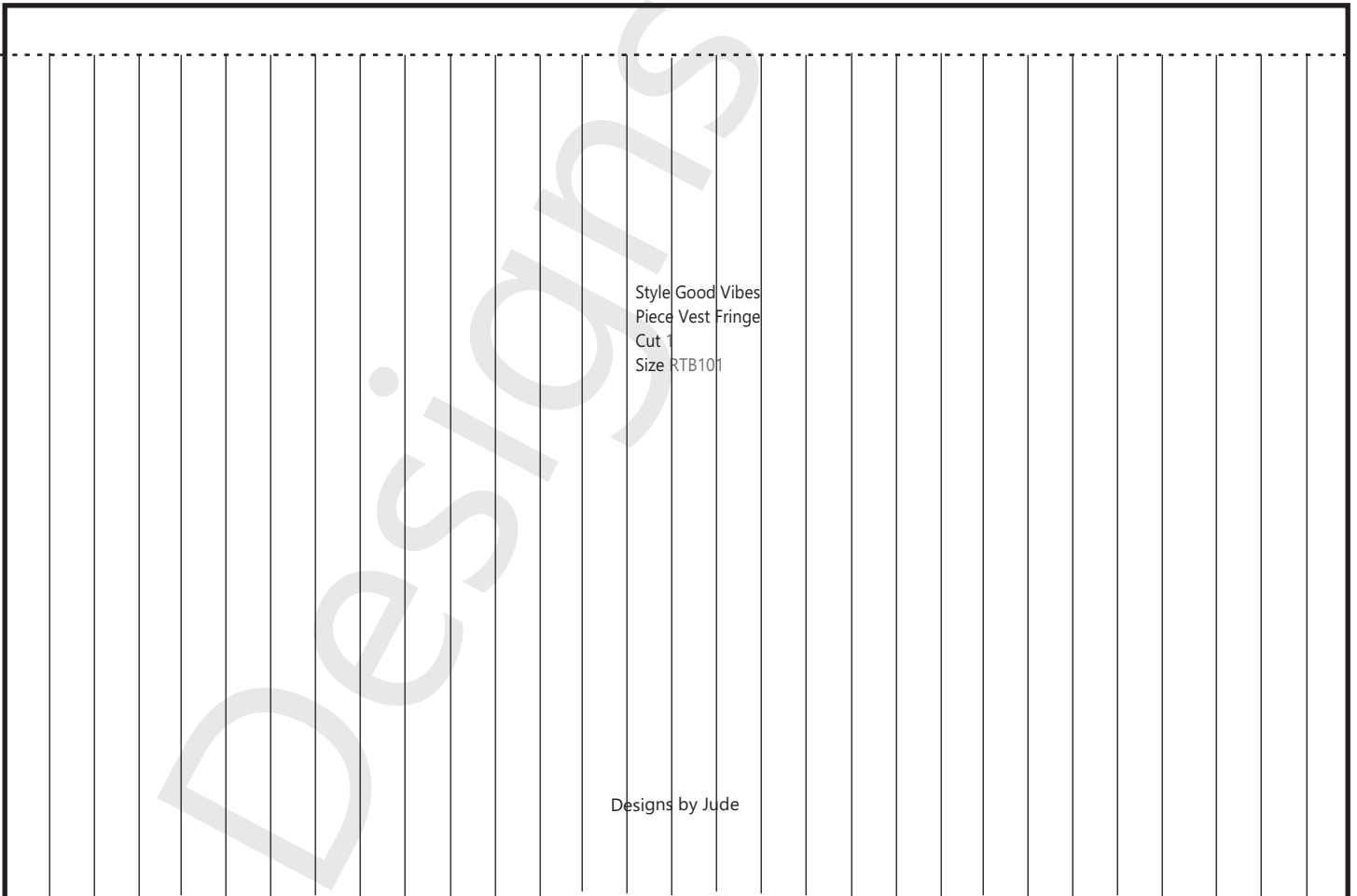
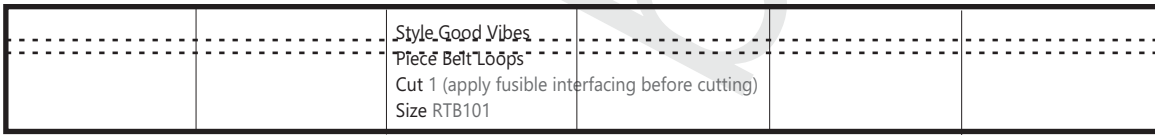
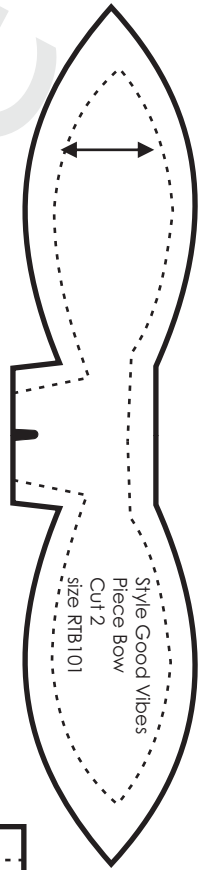
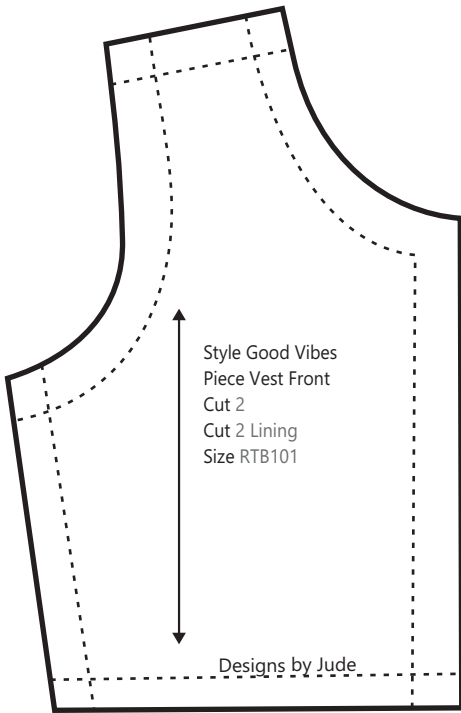
1. Right sides together, sew the vest front sections to the back at the shoulder seams.
2. RST, sew the front lining sections to the back lining at the shoulder seams. Press the seams open.
3. Turn the hem edge of the lining up ¼” and press.
4. RST, pin the lining to the vest and sew the front openings, around the neck and the armholes.
5. Clip and trim the seam allowance.
6. Turn the vest by passing the front sections to the back through the shoulder channel.
7. Sew the side seams by matching the armhole seam, lining to lining and vest to vest.
8. RST, pin fringe to the vest and sew in place.
9. Press the seam up and hand finish the vest lining to the seam.

There are sewing tutorials for this pattern on our Designs by Jude YouTube channel.

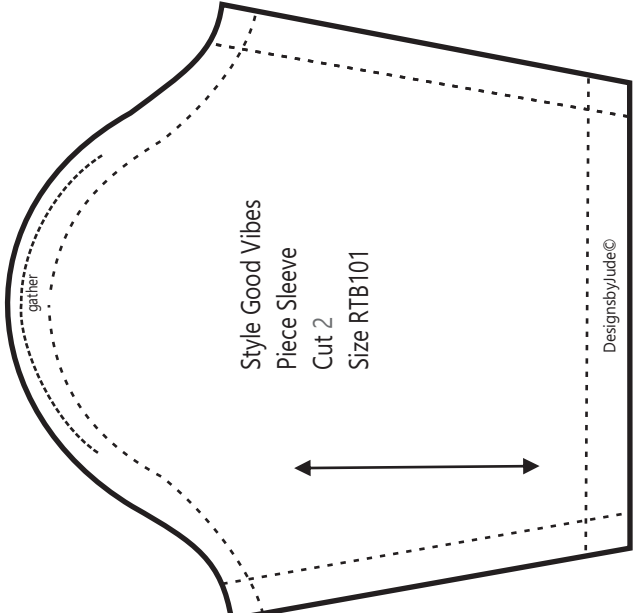
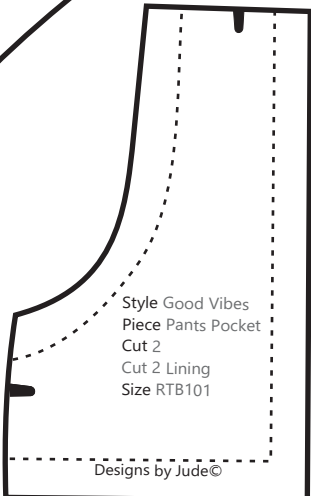
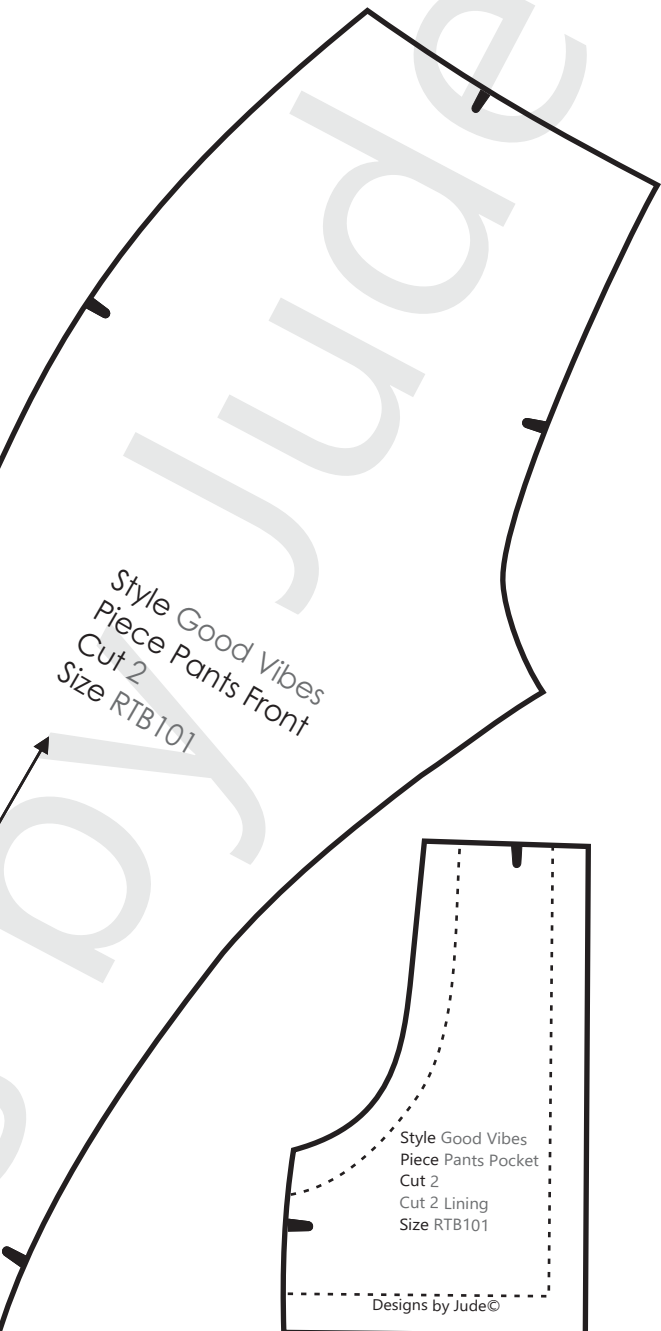
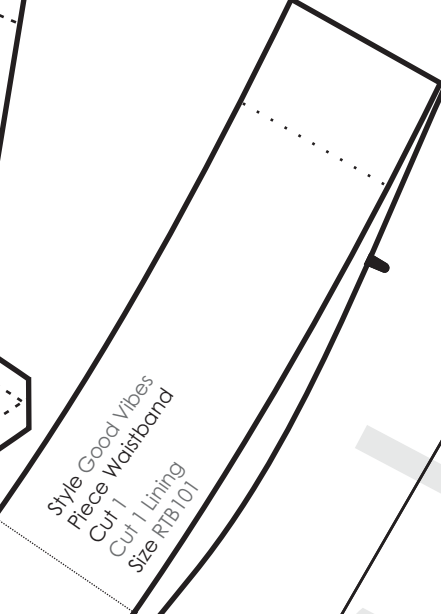
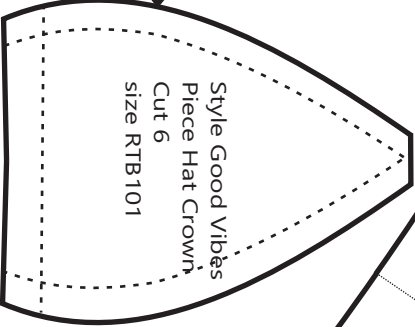
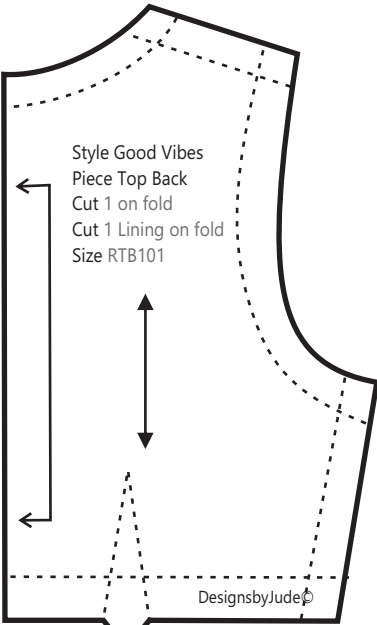
www.fletcherpatterncompany.com

VDC Collaboration

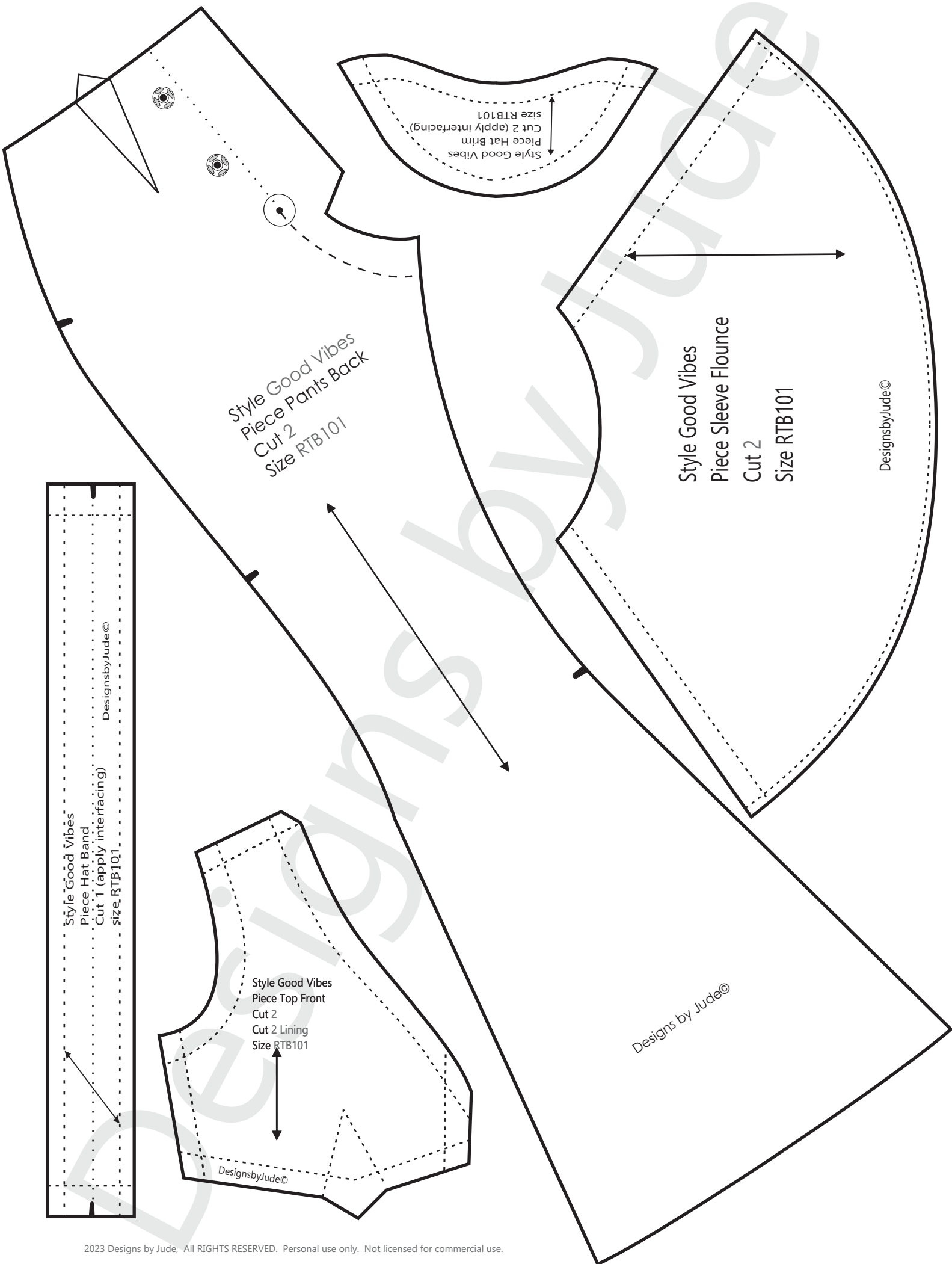
Good Vibes
for RTB101 Grace dolls



Fold Line
 Stitch Line - - - - -
 Grain Line ↔
 Notch ■ Dot ● Snap Ⓢ
 Seam allowance of 1/4"
 is already included in the
 dimensions of the pattern



Designs by Jude©



Style Good Vibes
Piece Pants Back
Cut 2
Size RTB101

Style Good Vibes
Piece Hat Brim
Cut 2 (apply interfacing)
size RTB101

Style Good Vibes
Piece Sleeve Flounce
Cut 2
Size RTB101

DesignsbyJude©

Designs by Jude©

Style Good Vibes
Piece Hat Band
Cut 1 (apply interfacing)
size RTB101

Style Good Vibes
Piece Top Front
Cut 2
Cut 2 Lining
Size RTB101

DesignsbyJude©