

A few notes about PDF patterns. . . .

This PDF pattern prints on regular letter size paper (8.5" x 11").

Patterns containing larger pieces will need to be taped together before cutting out the fabric.

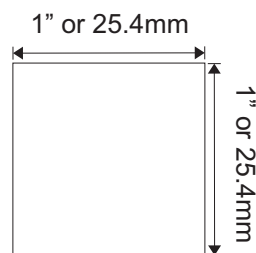
Be advised that this document needs to be printed to it's original scale. Please ensure that the printing options below are **not** selected.

Do Not: Rotate and Center, Fit to Page, Reduce to Fit or adjust the scale of this document.

Refer to the scale marker below to ensure that this copy is printed at the correct scale.

This PDF pattern is not licensed for commercial use and may not be shared, duplicated or distributed.

2022 Designs by Jude, All RIGHTS RESERVED. Personal use only. Not licensed for commercial use.



Designs by Jude

www.fletcherpatterncompany.com



VDC Collaboration
Retail Therapy
for 16" Ellowyne Wilde Dolls



Designed by
Tamara Casey



2022 Designs by Jude, All RIGHTS RESERVED. Personal use only.

VDC Ellowyne Collaboration

Retail Therapy

For 16" Ellowyne Wilde Dolls

Basic Instructions

You will get the most professional results by following a few recommendations.

- Use a 1/4" seam allowance unless noted otherwise on the pattern piece or instructions. This seam allowance is already included in the dimensions of the pattern.
- Press the garment as you work through each step. Press seams open where applicable.
- In un-lined garments, finish raw edges with an over-lock or zigzag stitch.
- Note that RST = Right Sides Together and WST = Wrong Sides Together.

Fabric and Notions

Dress: cotton or similar woven material

Lining: poly, cotton, silk essence

Notions: 4/0 snap sets, single-sided fusible interfacing, .5mm elastic thread, 1/8" elastic, matching thread

Dress

1. RST, sew the upper bodice back sections to the upper bodice front. Press seams open.
2. RST, sew the back facing pieces to the front facing piece. Press the seams open.
3. With the right sides together, pin the facing to the neck of the upper bodice.
4. Clip into the seam allowance and turn the facing to the inside of the bodice and press.
5. Top stitch around the neck opening to secure the facing in place.
6. Turn the sleeve edges up and hem in place.
7. Run a gathering stitch along the top of each sleeve cap.
8. Gently pull the gathers to fit the armhole edge of the bodice and sew sleeves in place.
9. Apply elastic rows to sleeves by anchoring one end of the elastic and stretching the elastic toward you as you zigzag the elastic in place. Repeat for the second row.
10. RST, sew the upper bodice back sections to the front at the side seams.
11. RST, sew the lower bodice back sections to the lower bodice front section. Press seams open.
12. RST, pin the lower bodice to the upper bodice and sew in place. Press the seam up.
13. Create a narrow hem on the lower ruffle.
14. Run a gathering stitch at the top edge of the lower ruffle.
15. Pull the gathers to fit the upper ruffle, pin them in place, then sew them together.
16. Run a gathering stitch at the top edge of the upper ruffle.
17. Pull the gathers to fit the dress bodice. Pin them RST and sew them in place.
18. Zigzag the raw edges of the left and right back openings.
19. Replace your bobbin thread with your elastic thread bobbin to start shirring.
20. Mark your guidelines with a heat erasable marker.
21. Start the first row of shirring with a few back stitches and 1/4" down from the bust seam.
22. Backstitch at the end of each row.
23. Continue shirring until you have 6 even rows or the desired effect.
24. RST, sew the center back seam of the dress from the hem edge to the top of the lower bodice section.
25. Fit to the doll and mark the placement for a snap at the back of the neck.
26. Sew the snap in place.

Short Sleeve Top

1. RST, sew the upper bodice back sections to the upper bodice front. Press seams open.
2. RST, sew the back facing pieces to the front facing piece. Press the seams open.
3. With the right sides together, pin the facing to the neck of the upper bodice.
4. Clip into the seam allowance and turn the facing to the inside of the bodice and press.
5. Top stitch around the neck opening to secure the facing in place.
6. Turn the sleeve edges up and hem in place.
7. Run a gathering stitch along the top of each sleeve cap.
8. Gently pull the gathers to fit the armhole edge of the bodice and sew sleeves in place.

9. Apply elastic row to sleeves by anchoring one end of the elastic and stretching the elastic toward you as you zigzag the elastic in place.
10. RST, sew the upper bodice back sections to the front at the side seams.
11. RST, sew the lower bodice back sections to the lower bodice front section. Press seams open.
12. RST, pin the lower bodice to the upper bodice and sew in place. Press the seam up.
13. Create a narrow hem and sew in place.
14. Zigzag the raw edges of the left and right back openings.
15. Replace your bobbin thread with your elastic thread bobbin to start shirring.
16. Mark your guidelines with a heat erasable marker.
17. Start the first row of shirring with a few back stitches and ¼" down from the bust seam.
18. Backstitch at the end of each row.
19. Continue shirring until you have 6 even rows or the desired effect.
20. RST, sew the center back seam of the top from the hem edge to the top of the lower bodice section.
21. Fit to the doll and mark the placement for a snap at the back of the neck.
22. Sew the snap in place.

Shorts

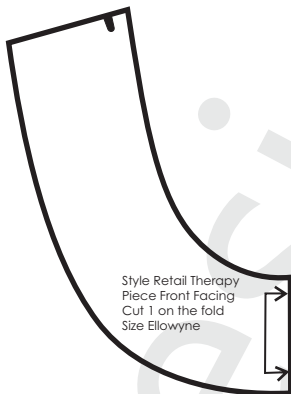
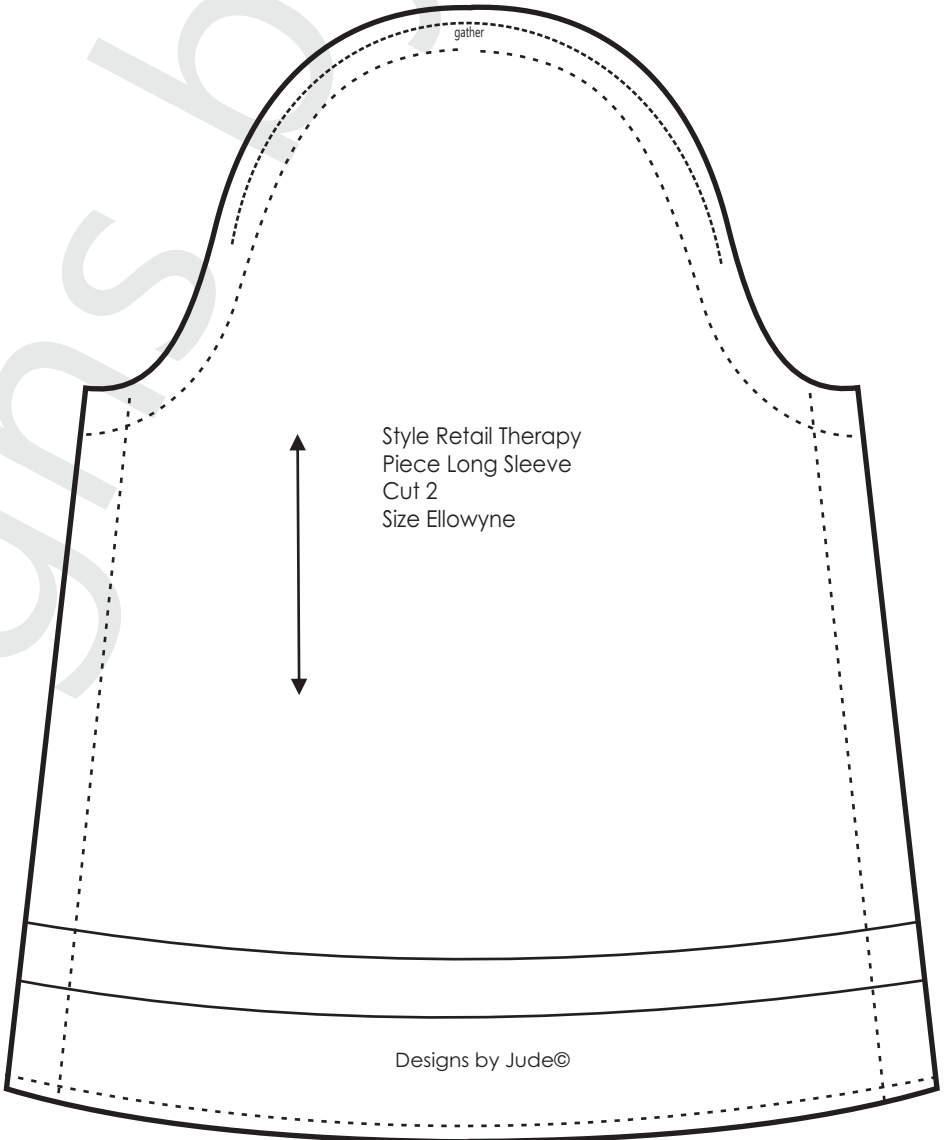
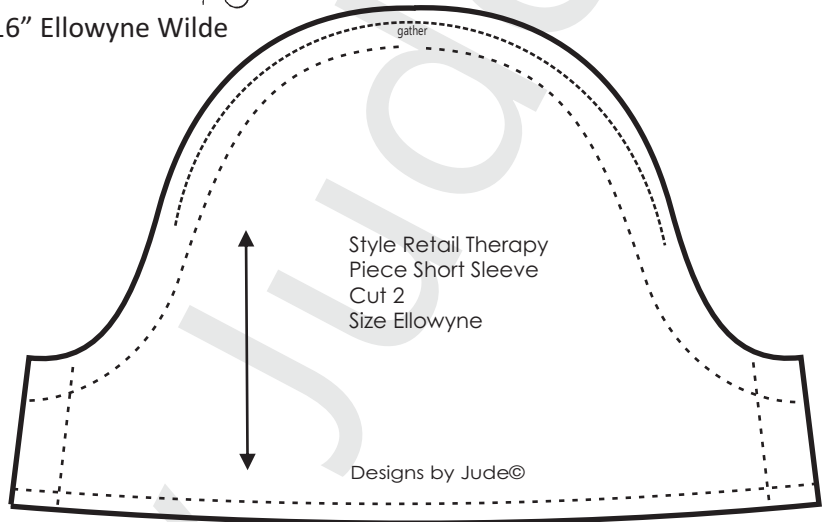
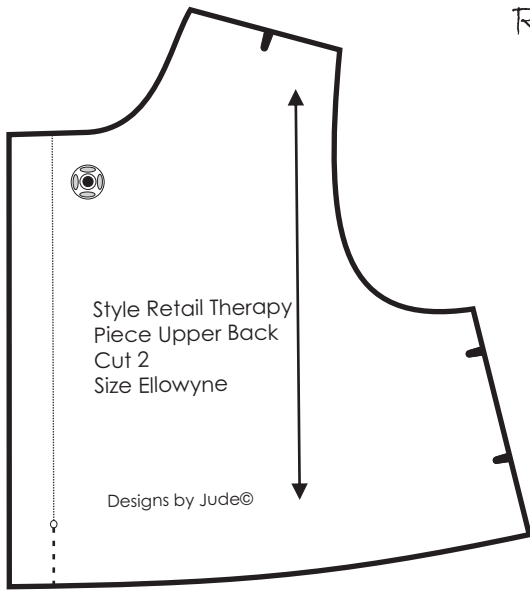
1. Sew darts in the short's front & back pieces. Press darts to the side.
2. RST, sew the front pieces together at the center front. Clip seam, press open.
3. RST, sew the short's back sections to the front of the shorts at the side seams. Clip seams, press open.
4. Repeat the above steps with the short's lining pieces.
5. RST, pin shorts lining to shorts and sew the waist edge and the hem edge. Turn shorts right side out and press.
6. Zigzag the raw edges of the shorts to the lining at the left and right back openings.
7. RST, sew the center back crotch seam. Clip in toward seam.
8. RST, sew the inner thigh seams. Press open.
9. Turn left back opening under ¼" and press.
10. Fit to the doll and mark the placement for the snap.
11. Sew snap in place.

There is a sewing tutorial for this pattern on our Designs by Jude YouTube channel.
www.fletcherpatterncompany.com

VDC Collaboration

Retail Therapy

for 16" Ellowyne Wilde



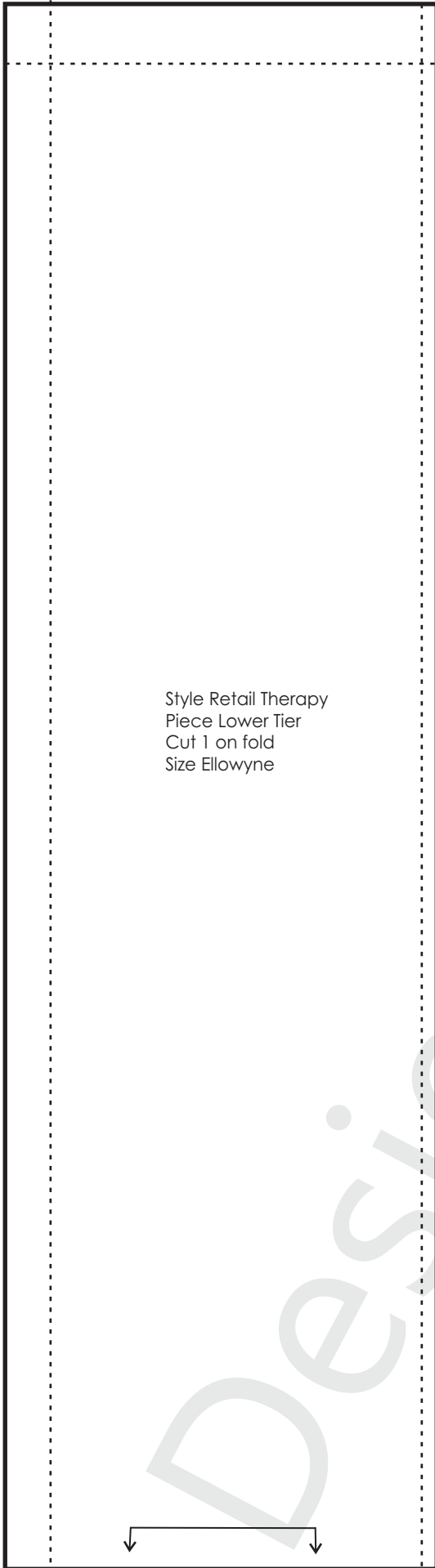
VDC Collaboration

Retail Therapy

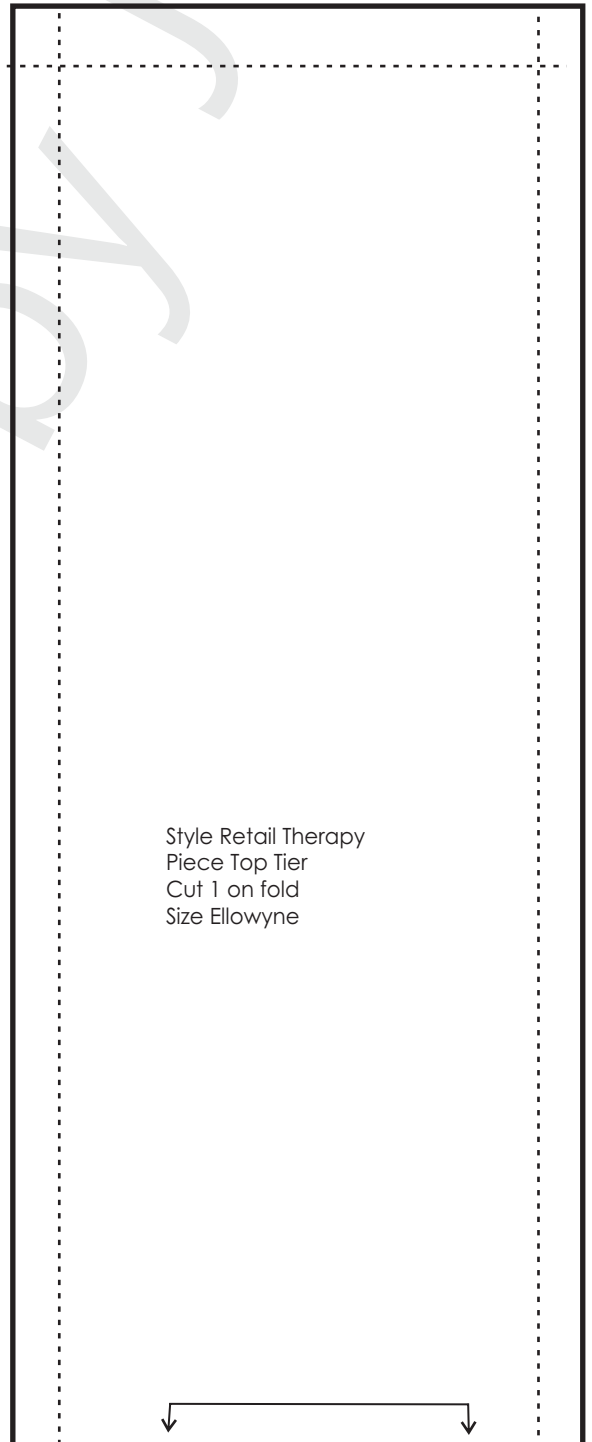
for 16" Ellowyne Wilde

Fold Line
Stitch Line - - - - -
Grain Line ← →
Notch ▴ Dot ⊙ Snap ⊗

Seam allowance of 1/4"
is already included in the
dimensions of the pattern



Style Retail Therapy
Piece Lower Tier
Cut 1 on fold
Size Ellowyne



Style Retail Therapy
Piece Top Tier
Cut 1 on fold
Size Ellowyne

VDC Collaboration

Retail Therapy

for 16" Ellowyn Wilde

