

A few notes about PDF patterns from Designs by Jude. . . .

This PDF pattern requires legal size paper (8.5" x 14") or A4 size paper (8.27" x 11.69", 210mm x 297mm). It will **not** print on standard letter.

Patterns containing larger pieces will need to be taped together before cutting out the fabric.

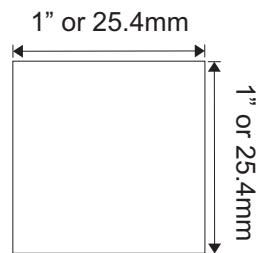
Be advised that this document needs to be printed to it's original scale. Please ensure that the printing options below are **not** selected.

**Do Not:** Rotate and Center, Fit to Page, Reduce to Fit or adjust the scale of this document.

Refer to the scale marker below to ensure that this copy is printed at the correct scale.

This PDF pattern is not licensed for commercial use and may not be shared, duplicated or distributed.

Designs by Jude, All RIGHTS RESERVED. Personal use only. Not licensed for commercial use.



Designs by Jude

company.com

VDC Club Grace

Looking Glass

for 16.5" RTB101 Dolls



Designed by

*Tamara Casey*

\$12.95



# VDC Club Grace Collaboration

## Looking Glass

For 16.5" RTB101 Grace Dolls

### **Basic Instructions**

You will get the most professional results by following a few recommendations.

- Use a ¼" seam allowance unless noted otherwise on the pattern piece or instructions. This seam allowance is already included in the dimensions of the pattern.
- Press the garment as you work through each step. Press seams open where applicable.
- In un-lined garments, finish raw edges with an over-lock or zigzag stitch.
- Note that RST = Right Sides Together and WST = Wrong Sides Together.

### **Fabric and Notions**

#### **Dress & Coat:**

cotton, woven, blends, felt scraps for hat and rabbit ears

#### **Lining:**

poly, lightweight cotton, silk essence

#### **Notions:**

4/0 snap sets, narrow elastic, tiny buttons, matching thread, fusible interfacing, lace, beads & trim

### **Dress with Short Sleeves**

1. With the wrong sides together, sew the center front seam, (3/8") from the folded edge. Press.
2. Slip some lace under the folded edge on each side. Topstitch in place.
3. Sew bodice side front sections to bodice front section. Press seams open.
4. Sew the bodice side back sections to the bodice back sections. Press seams open.
5. Sew the bodice back sections to the bodice front at the shoulder seams. Press seams open.
6. Hem each sleeve. Apply lace if desired.
7. Run a gathering stitch at each sleeve cap.
8. Pull the gathers to fit the armhole opening. Pin the sleeves in place and then sew.
9. On the wrong side of each sleeve, secure the elastic at one end, with a narrow zigzag stitch, sew the elastic in place while pulling it toward you to create the gathers.
10. With the right sides together sew the bodice back sections to the front at the side seams.
11. Repeat steps 2-4 with the bodice lining pieces.
12. Zigzag the raw edges of the armhole openings.
13. RST, sew the back lining pieces to the front and the side seams. Press the seams open.
14. Turn the bodice lining up ¼" and press.
15. RST, pin the bodice lining to the bodice.
16. With the lining side up, sew around the neck opening and down the left back opening.
17. Check both sides, clip and trim the seam allowance, turn the right side out, and press.
18. Sew the skirt back sections to the front at the side seams. Clip seams and press them open.
19. Repeat with skirt lining pieces.
20. RST, pin the skirt lining to the skirt and sew the hem edge.
21. Clip and trim the seam allowance, turn the lining to the inside and press the hemline.
22. Apply lace if desired.
23. Zigzag the raw edges of the skirt to the skirt lining at both back openings.
24. Run a gathering stitch at the waist edge of the skirt.
25. Pull the gathers evenly and pin them to the bodice, matching the side seams.
26. Press the seam up.
27. Zigzag the raw edge of the bodice lining and bodice together at the right back opening.
28. Hand stitch the bodice lining to the waist seam.
29. Sew the center back seam of the dress from the hem edge to the dot as indicated on the pattern piece.
30. Press the seam allowance to the left.
31. Fit the dress to the doll and mark the placement for the snaps.
32. Sew the snaps in place. Add decorative buttons.

### **Coat with Peplum**

1. Sew the darts in the coat's front and back pieces. Press the darts.
2. Sew the center back seam of the coat.
3. Sew the front and back pieces together at the shoulder seams. Press the seams open.
4. Fold the sleeve ruffle in half with the right side out and press.
5. Run a gathering stitch along the raw edge.
6. Pull the gathers evenly to match the edge of the sleeve. Pin in place then sew.
7. Press the seam allowance up. (you can add trim to the sleeve if desired)
8. Run a gathering stitch between the dots on each sleeve cap to ease the sleeve into the armhole opening.
9. RST, pin the sleeves to the coat and sew in place.
10. Sew the coat front and back together at the side seams. Press the seams open.
11. RST, sew the center back seam of the upper collar pieces. Press the seams open.
12. Place the upper collar pieces RST and sew up each side and across the back, leaving the neck edge open.

13. Clip and trim the seam allowance and turn the collar, then press.
14. RST, sew the collar tab pieces on both straight edges. Clip and trim the seam allowance, turn, and press.
15. Place the tabs on the right side of the collar, matching notches, and baste in place.
16. Pin the collar to the coat matching the center back seams and baste in place.
17. **\* If you want to add the queen's collar, apply fusible interfacing to the pieces, sew all straight edges, trim the seam allowance, turn, and press. Next, you will center the collar on top of the upper collar and baste in place. \***
18. Sew darts in the coat lining pieces. Press the darts.
19. Sew the front and back lining together at the shoulder seams. Press open.
20. Turn the sleeve edge up ¼" and press.
21. Run a gathering stitch along the cap of the sleeve lining to help ease into the armhole opening.
22. Pin sleeve lining to coat and sew in place.
23. Sew the lining front and back together at the side seams. Press the seams open.
24. RST, pin the coat lining to the coat and sew up the front and around the neck. Clip and trim the seam allowance.
25. Turn the coat right side out and press.
26. RST, sew the center back seam of the peplum. Press the seam open.
27. RST, sew the peplum front pieces to the back. Press the seams open.
28. Repeat the same steps with the peplum lining pieces.
29. RST, pin the peplum lining to the peplum. Sew around leaving the waist edge unsewn.
30. Clip and trim the seam allowance, then turn the peplum right side out and press.
31. Run a basting stitch across the waist edge.
32. Add trim to the edge of the peplum if desired.
33. Pin the peplum to the coat bodice, matching the side seams and finished front edge.
34. Sew the peplum in place. Press the seam allowance up.
35. Hand finish the lining to the waist seam.
36. Hand finish the sleeve lining to the sleeve ruffle seam.
37. Fit to the doll and mark the placement for snaps.
38. Sew the snaps in place and add buttons and trim as desired.

#### **Collar, Tie & Cuffs**

1. With the right sides together, sew the collar pieces together leaving a small opening for turning.
2. Clip and trim the seam allowance.
3. Turn the collar right side out and press.
4. Hand finish the opening used to turn the collar.
5. With the right sides together, sew the tie pieces together leaving a small opening for turning.
6. Clip and trim the seam allowance.
7. Turn the tie right side out and press.
8. Hand finish the opening used to turn the tie.
9. Fold the tie in half and gather through the center.
10. Sew a hook and eye at the center of the collar.
11. Position the tie at the center of the collar and sew it in place.
12. Fold cuffs with right sides together and sew both short ends and across the long end leaving a small hole to turn.
13. Clip and trim the seam allowance.
14. Turn the cuffs right side out and press.
15. Finish the hole used to turn each cuff and sew on decorative buttons or beads.
16. A snap set can be applied to each cuff or they can be sewn together and slipped on the wrist by removing the doll's hands.

#### **Felt Top Hat**

1. Hand sew the hat side band together at the short ends. (there is no seam allowance, sew raw edges together).
2. Sew the hat top to the wider end of the hat side band piece.
3. Sew the hat brim to the narrower end of the hat band piece.
4. Decorate with ribbon and trims as desired.

#### **Felt Rabbit Ears**

1. Cut the ear and inner ear pieces out of felt.
2. Glue or sew the pink inner ear to the white ear.
3. Cut a 6" piece of floral wire. Twist the ends together and form a thin oval.
4. Cut a 3" x ½" of card stock, fold in half lengthwise then glue the wire in between the layers.
5. Glue both ears near the center of the headband.
6. Cut to short pieces of satin ribbon and glue over each end of the headband.
7. Starting at one end, glue the end of the ribbon on the underside of the headband.
8. Wrap the rest of the band with the ribbon weaving around/between the ears, until you get the other side.
9. Secure the end in place.

# VDC Collaboration

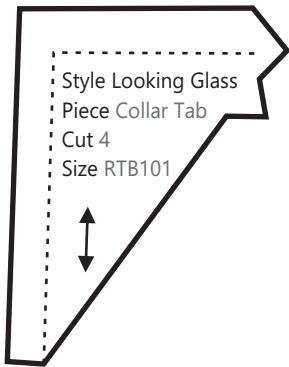
## Looking Glass

for RTB101 Grace Dolls

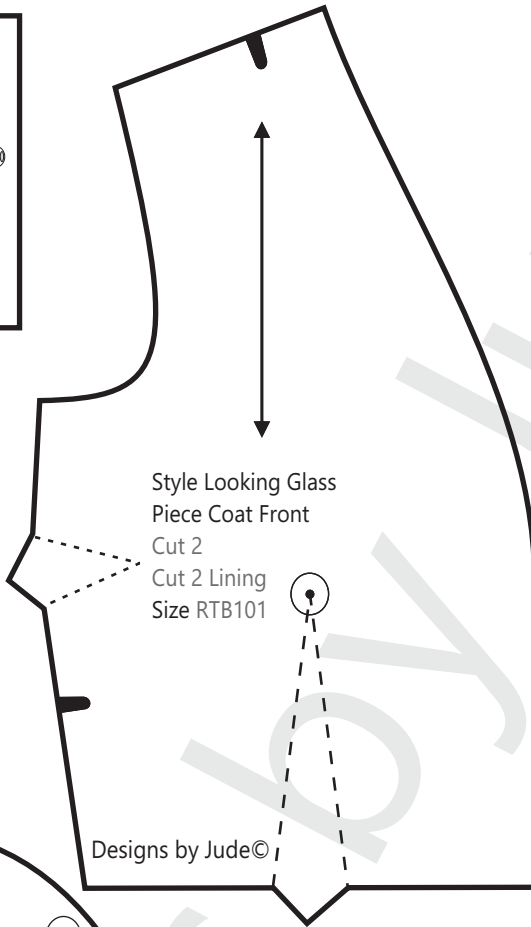
Fold Line .....  
Stitch Line - - - - -  
Grain Line ← →  
Notch ■ Dot ● Snap ⊙

Seam allowance of 1/4"  
is already included in the  
dimensions of the pattern

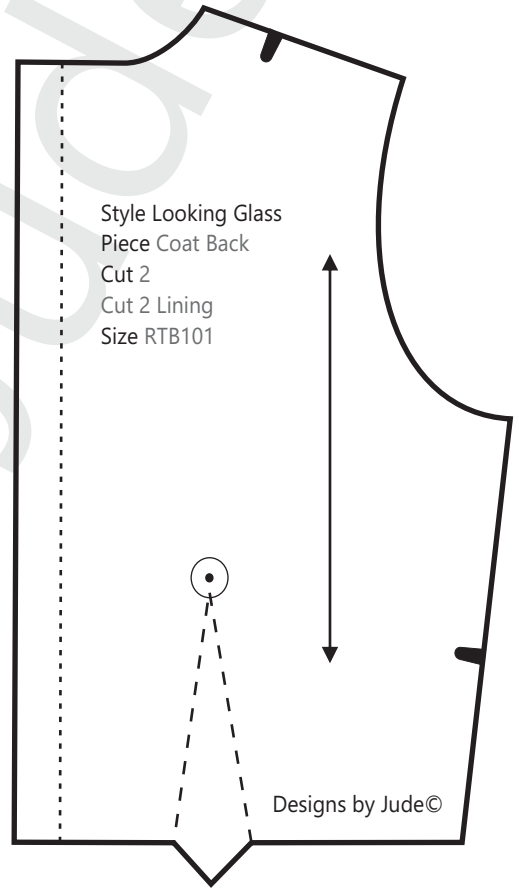
Style Looking Glass  
Piece Collar Tab  
Cut 4  
Size RTB101



Style Looking Glass  
Piece Coat Front  
Cut 2  
Cut 2 Lining  
Size RTB101



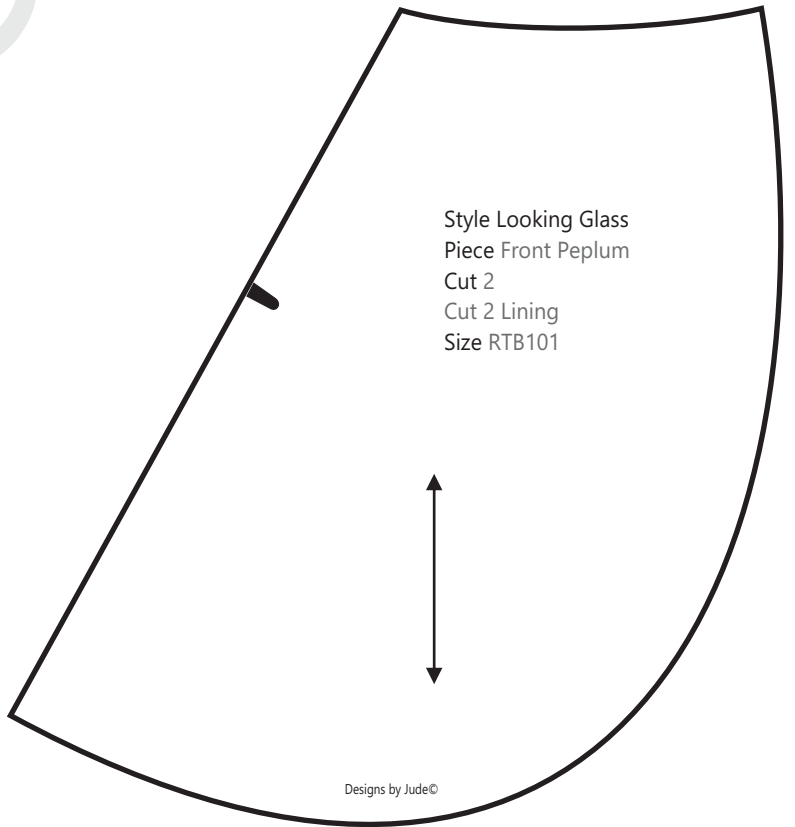
Style Looking Glass  
Piece Coat Back  
Cut 2  
Cut 2 Lining  
Size RTB101



Style Looking Glass  
Piece Coat Sleeve  
Cut 2  
Cut 2 Lining  
Size RTB101

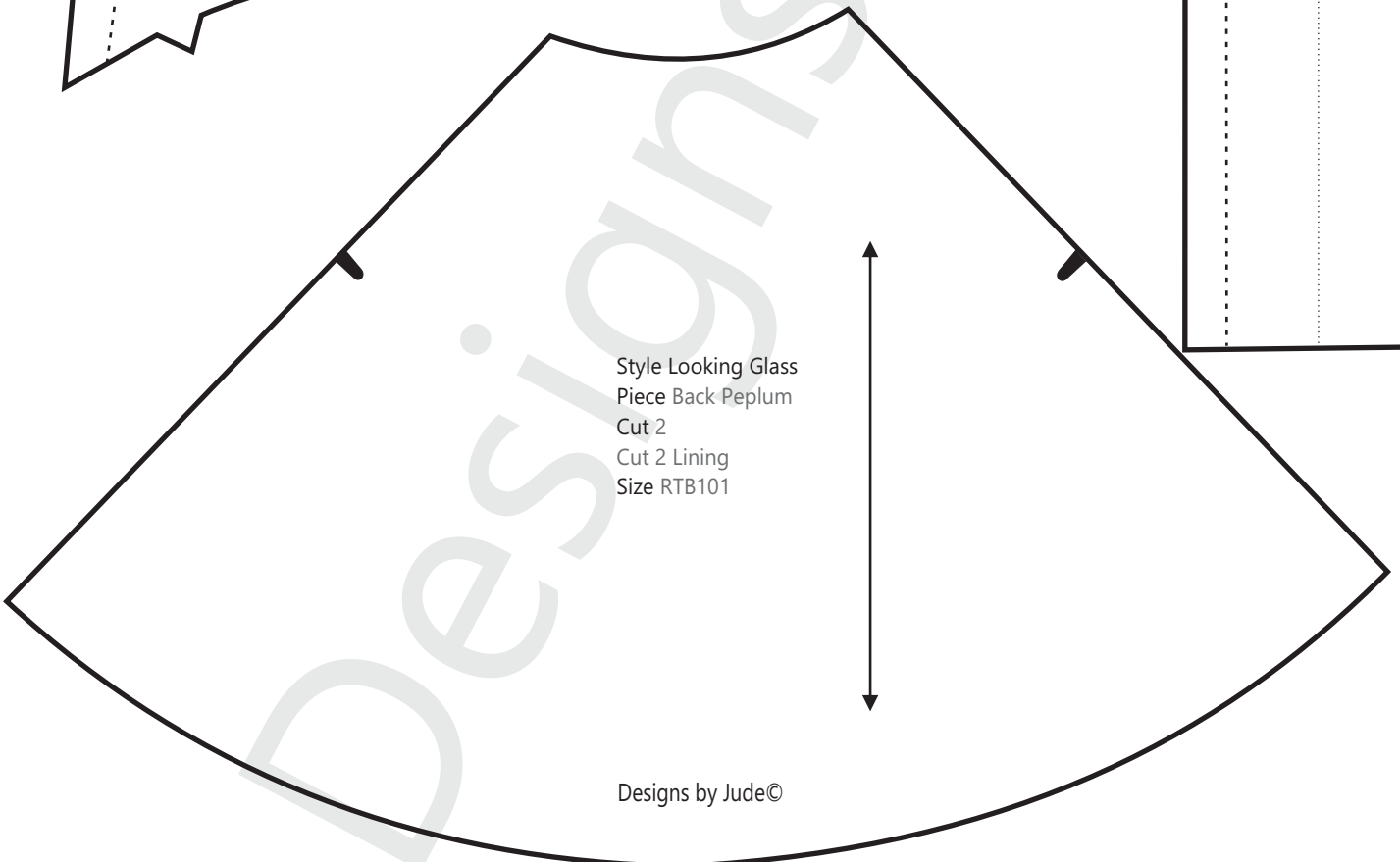
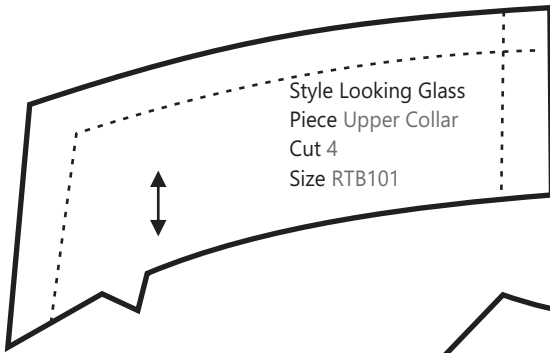
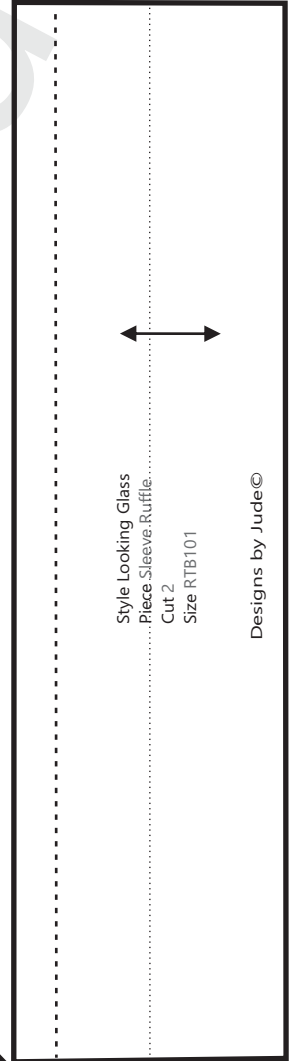
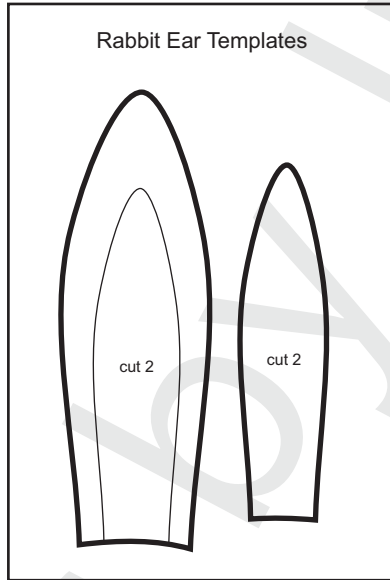
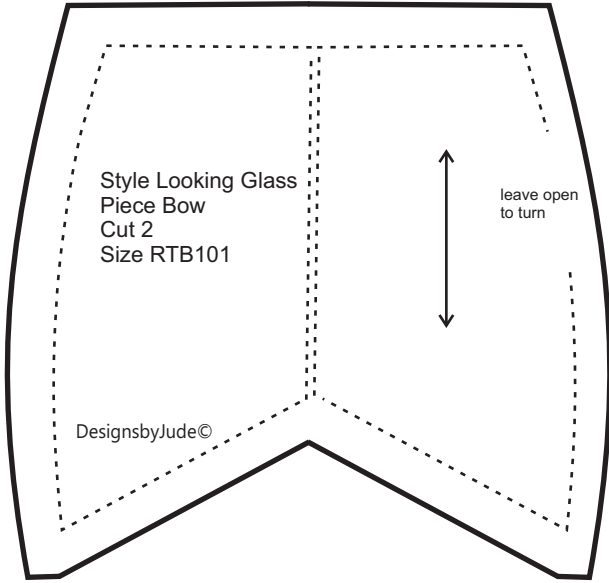


Style Looking Glass  
Piece Front Peplum  
Cut 2  
Cut 2 Lining  
Size RTB101



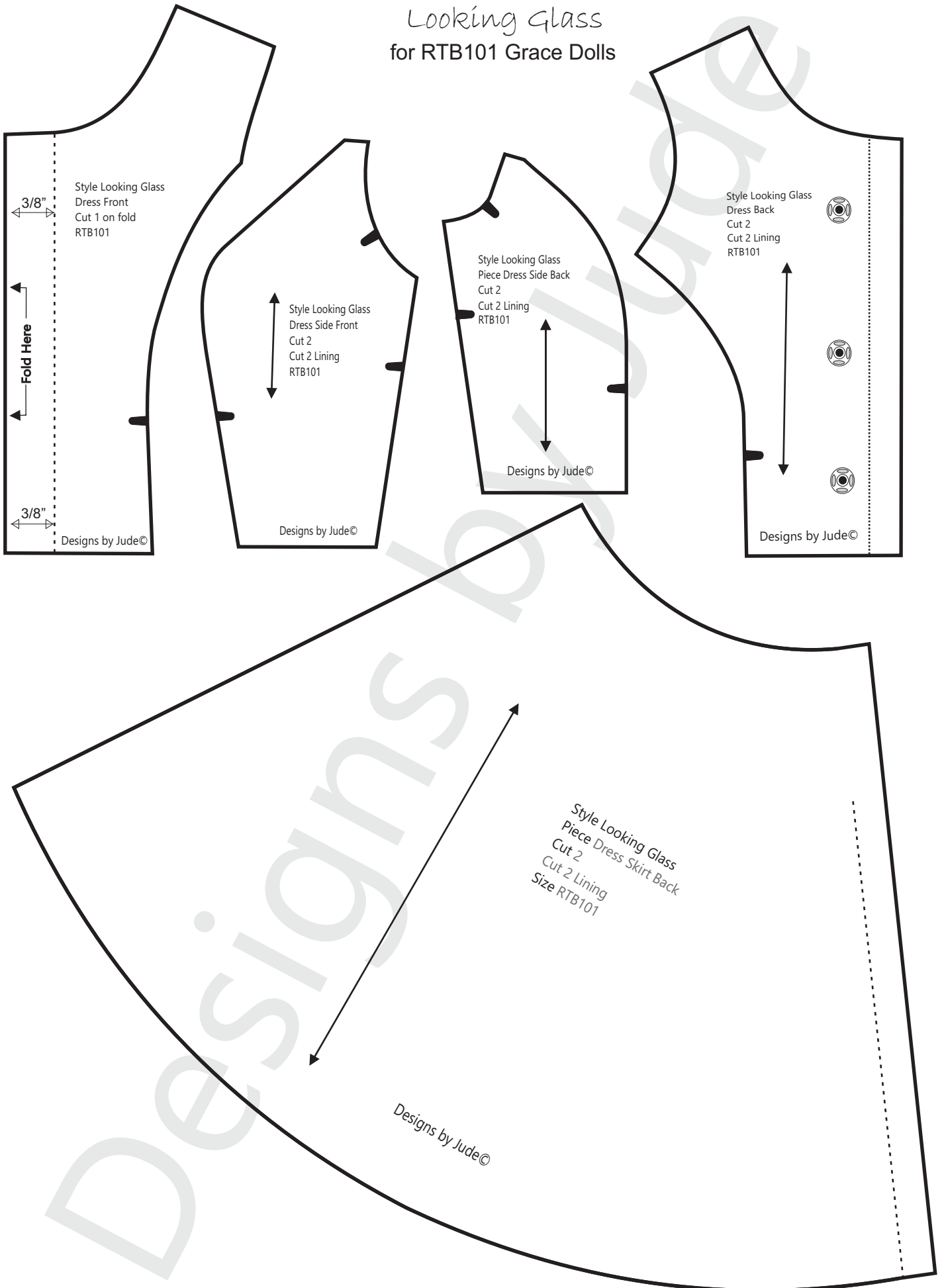
# VDC Collaboration

Looking Glass  
for RTB101 Grace Dolls



# VDC Collaboration

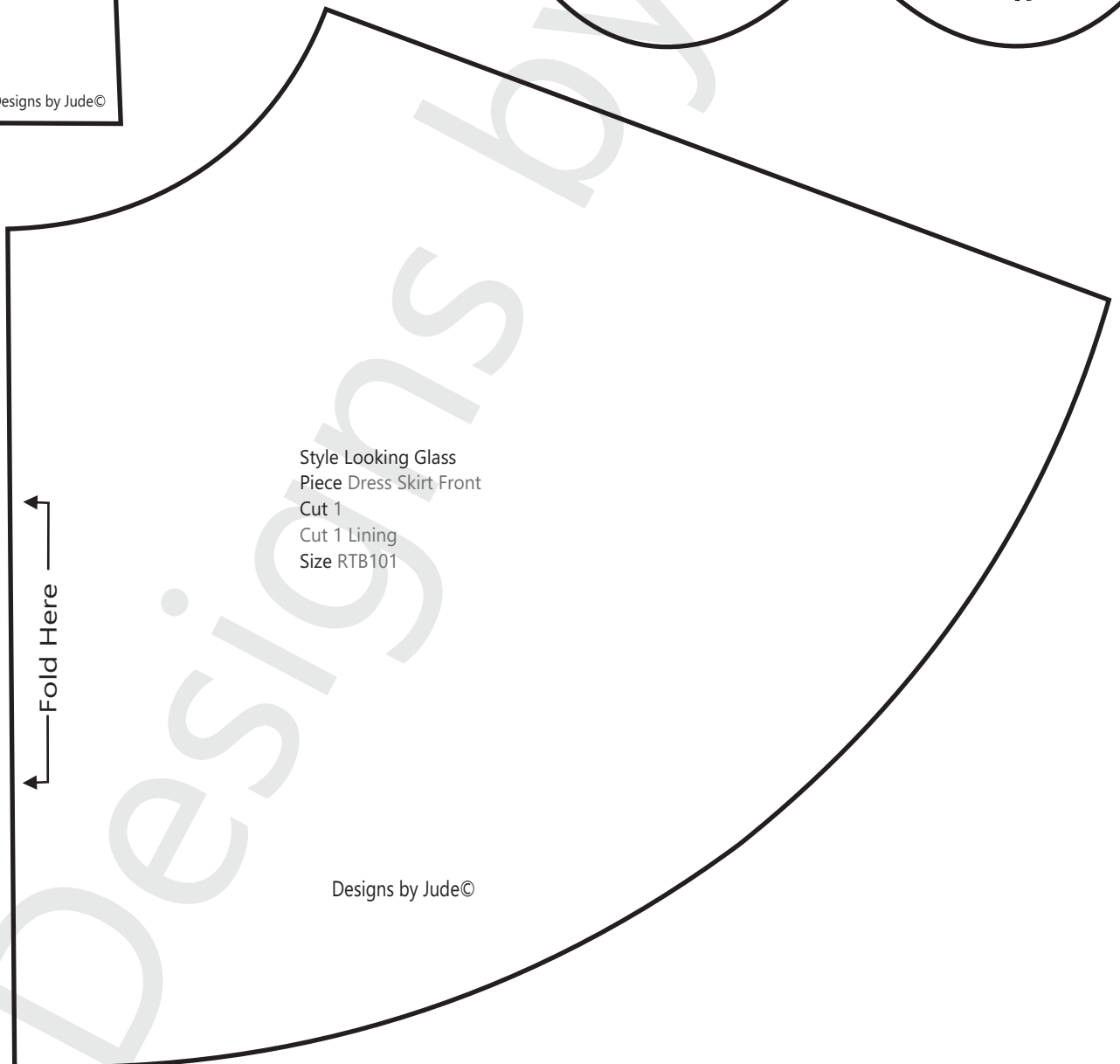
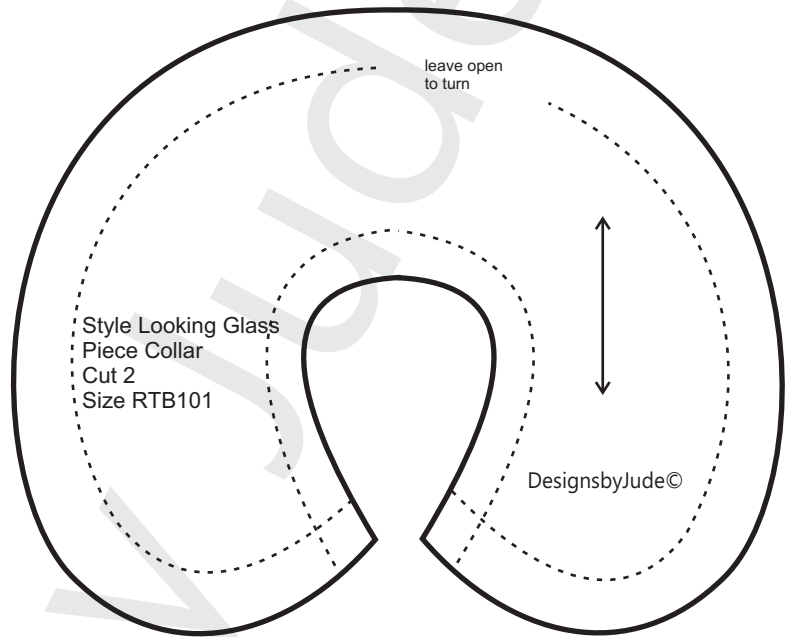
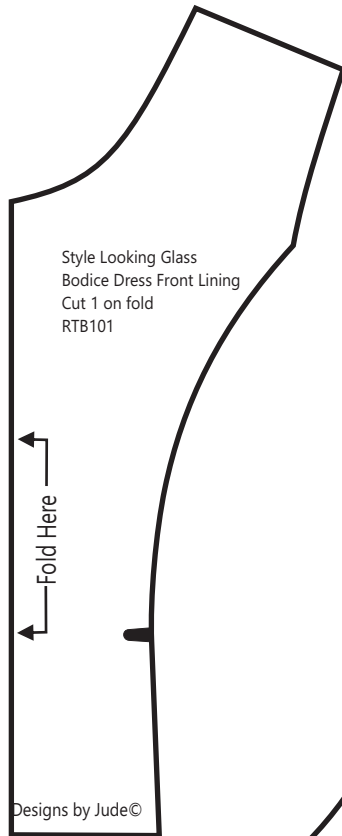
## Looking Glass for RTB101 Grace Dolls



# VDC Collaboration

## Looking Glass

for RTB101 Grace Dolls





# VDC Collaboration

## Looking Glass

for RTB101 Grace Dolls

