

A few notes about PDF patterns from Designs by Jude. . . .

This PDF pattern requires legal size paper (8.5" x 14") or A4 size paper (8.27" x 11.69", 210mm x 297mm). It will **not** print on standard letter.

Patterns containing larger pieces will need to be taped together before cutting out the fabric.

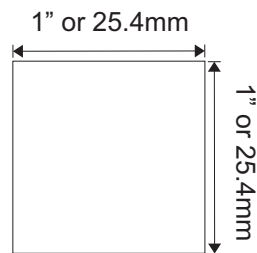
Be advised that this document needs to be printed to it's original scale. Please ensure that the printing options below are **not** selected.

Do Not: Rotate and Center, Fit to Page, Reduce to Fit or adjust the scale of this document.

Refer to the scale marker below to ensure that this copy is printed at the correct scale.

This PDF pattern is not licensed for commercial use and may not be shared, duplicated or distributed.

Designs by Jude, All RIGHTS RESERVED. Personal use only. Not licensed for commercial use.



Designs by Jude

www.fletcherpatterncompany.com

VDC Club Grace
Ladies Who Lunch
for 16.5" RTB101 Dolls



Designed by
Tamara Casey



VDC Club Grace Collaboration

Ladies Who Lunch

For 16.5" RTB101 Body Dolls

Basic Instructions

You will get the most professional results by following a few recommendations.

- Use a ¼" seam allowance unless noted otherwise on the pattern piece or instructions. This seam allowance is already included in the dimensions of the pattern.
- Press the garment as you work through each step. Press seams open where applicable.
- In un-lined garments, finish raw edges with an over-lock or zigzag stitch.

Note that RST = Right Sides Together and WST = Wrong Sides Together.

Fabric and Notions

Dress & Cape: lightweight wool, blend, or similar (fabric that holds a press works best)

Lining: poly, lightweight cotton, silk essence

Notions: 5" zipper, matching thread

Dress

1. Sew darts in the dress bodice. Press the darts.
2. Sew the dress skirt's side front sections to the front section from the waist edge to the dot at the top of the inset.
3. Clip the seam allowance toward the dot.
4. Baste the skirt's side front sections from the dot to the hem edge. (this is a ½" seam allowance)
5. Press the seams open.
6. RST, matching seams, and darts sew the dress bodice to the dress front skirt assembly.
7. RST, sew the dress side back sections to the back sections from the armhole edge to the dot at the top of the inset.
8. Clip the seam allowance toward the dot.
9. Baste the dress side back sections to the back sections from the dot to the hem. (this is a ½" seam allowance)
10. Press the seams open.
11. Sew the center back seam of the dress from the hem edge to the dot as indicated on the pattern.
12. Press the seam open.
13. Place the zipper into the opening and handset or machine stitch the zipper in place.
14. To sew an inset to the four dress seams that are basted, place the inset right side down on the seam allowance and sew up one side from the hem edge to the dot.
15. With the dress tucked out of the way, sew the inset to the other side of the seam allowance from the hem edge to the dot. Repeat with the other three insets.
16. Press the seams and insets.
17. RST, sew the dress front and the dress back at the shoulder seams. Press the seams open.
18. Turn up the sleeves ¼" and press.
19. Run a gathering stitch along each sleeve cap between the dots.
20. Pull the gathering stitch gently to ease the sleeves into the armhole openings.
21. Pin the sleeves to the armhole openings and sew them in place.
22. RST, matching the underarm seam, sew the dress back to the front at the side seams. Clip seams and press open.
23. Get an initial fit to the doll.
24. Repeat the above steps that apply to construct the dress lining.
25. RST, pin the dress lining to the dress at the bodice. Sew across the top of the bodice from zipper tape to zipper tape.
26. Clip and trim the seam allowance.
27. Push the lining into the dress and press the neckline.
28. Pin the lining to the zipper tape.
29. Hand finish the sleeve lining to the sleeves at the cuff edge and the lining to the zipper tape.
30. Turn the hem edge of the dress up and press. Finish by hand or machine.
31. Hem the lining.
32. Give a final press to the hem and insets for a crisp look.

Cape

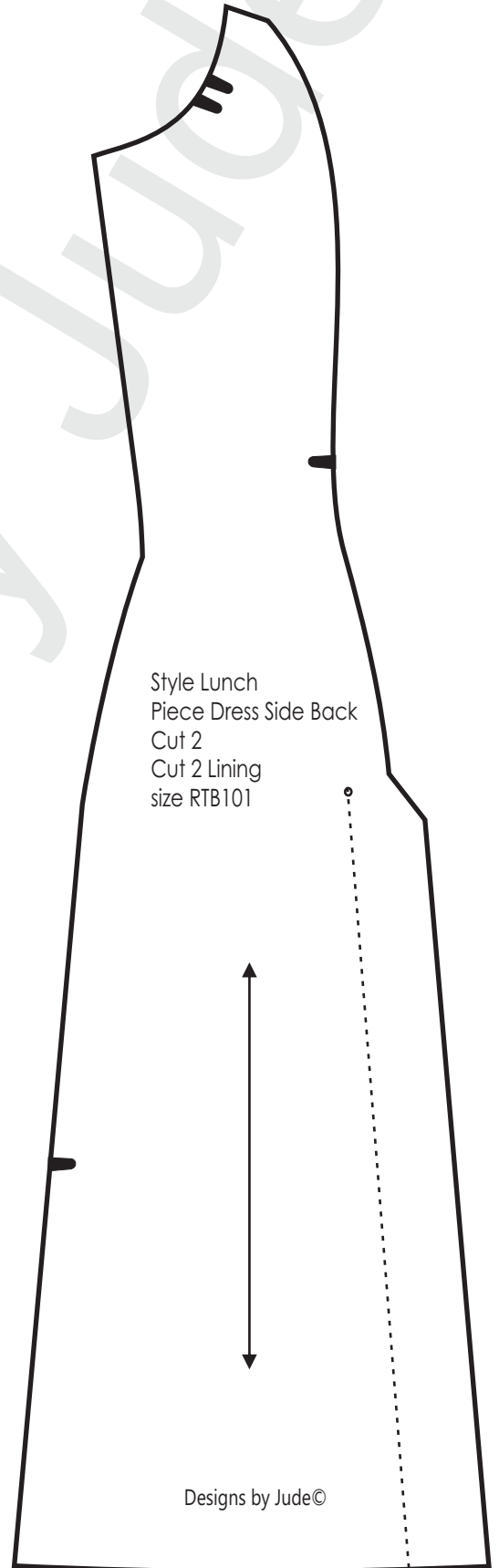
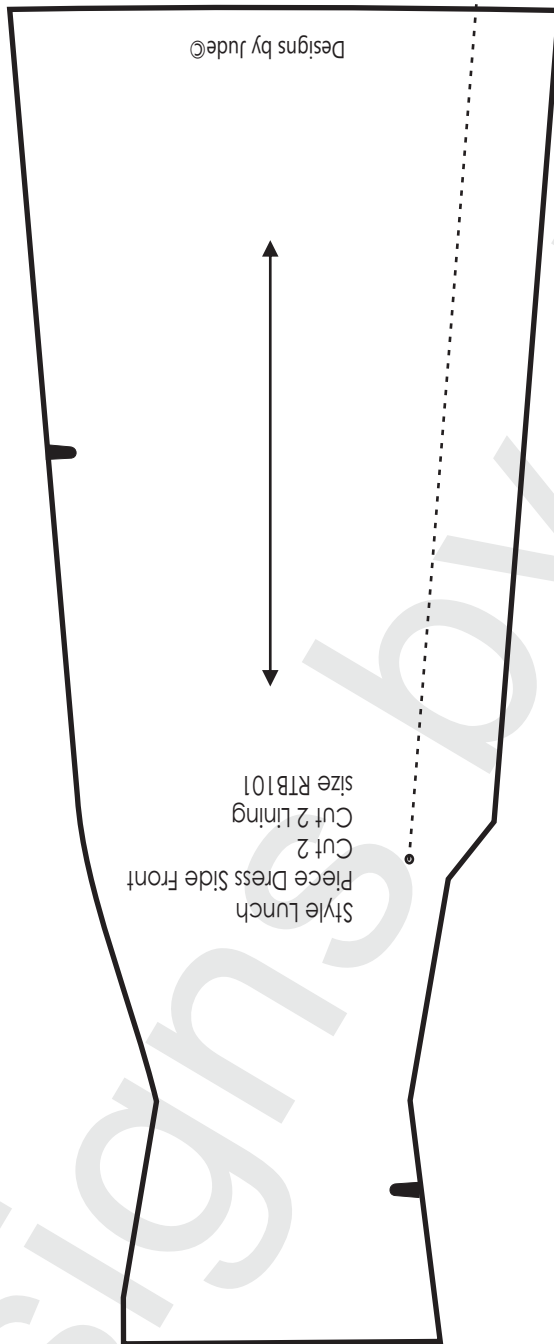
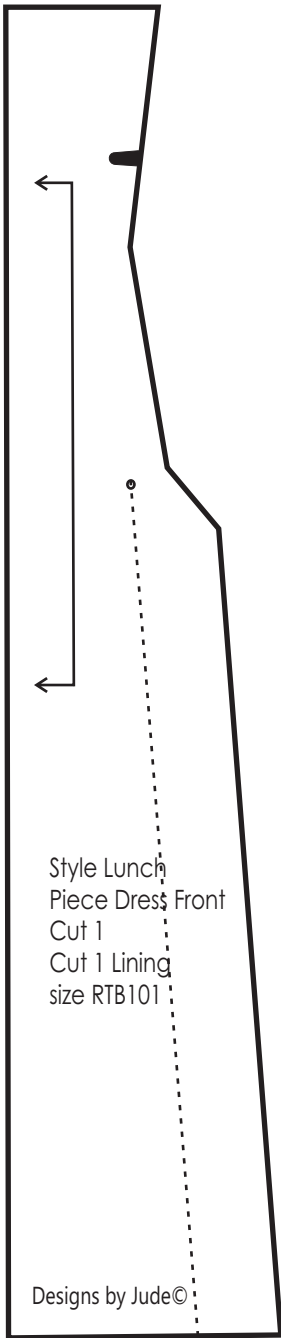
1. Right sides together, sew the cape side back sections to the cape back section, leaving the belt section unsewn.
2. Press the seams open.
3. RST, sew the cape side front sections to the cape front sections, leaving the belt section unsewn.

4. Press the seams open.
5. RST, sew the cape front sections together at the center back neck seam. Press the seam open.
6. Take a small clip into the corner of each cape front piece between the shoulder and neck as indicated on the pattern piece.
7. RST, matching seams, pin the cape front sections to the cape back.
8. Sew them together from the hem to the shoulder, then pivot to sew the neck edge, pivot again to the opposite shoulder then down to the opposite side.
9. Clip and trim the seam. Press open.
10. RST, sew the cape facing together at the neck. Press the seam open.
11. Zigzag or serge the raw edge of the facing.
12. RST. pin the facing to the cape front and sew from hem edge to hem edge.
13. Trim the seam and press.
14. Serge along the hem.
15. Fold the hem up and press.
16. Hand or machine stitch the hem.
17. Cut a strip of fabric 1" x 12" for the belt.
18. RST, sew the ends and the long side together, leaving a small opening for turning.
19. Trim the seam allowance, turn the belt right side out, and press.
20. Hand finish the opening used to turn the belt.
21. Feed the belt into seam openings at the back of the cape.
22. Feed the belt through the seam openings in the cape front sections.
23. Fit the cape to the doll and tie the belt at the front.

There is a sewing tutorial for this pattern on our Designs by Jude YouTube channel.
www.fletcherpatterncompany.com

VDC Collaboration

Ladies Who Lunch
for RTB101 Grace dolls

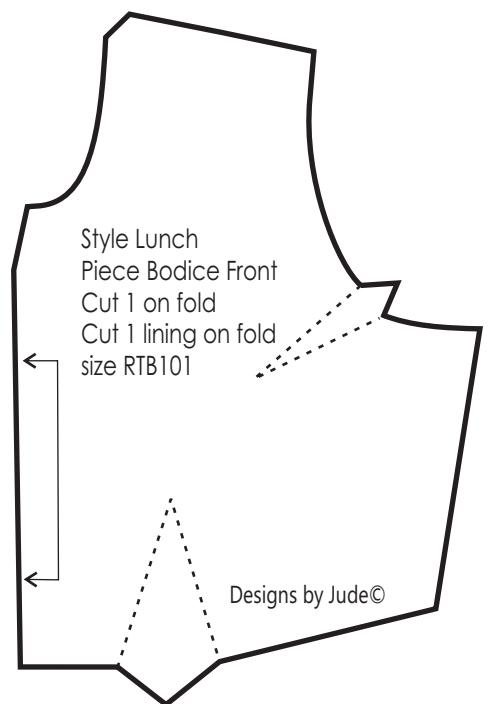
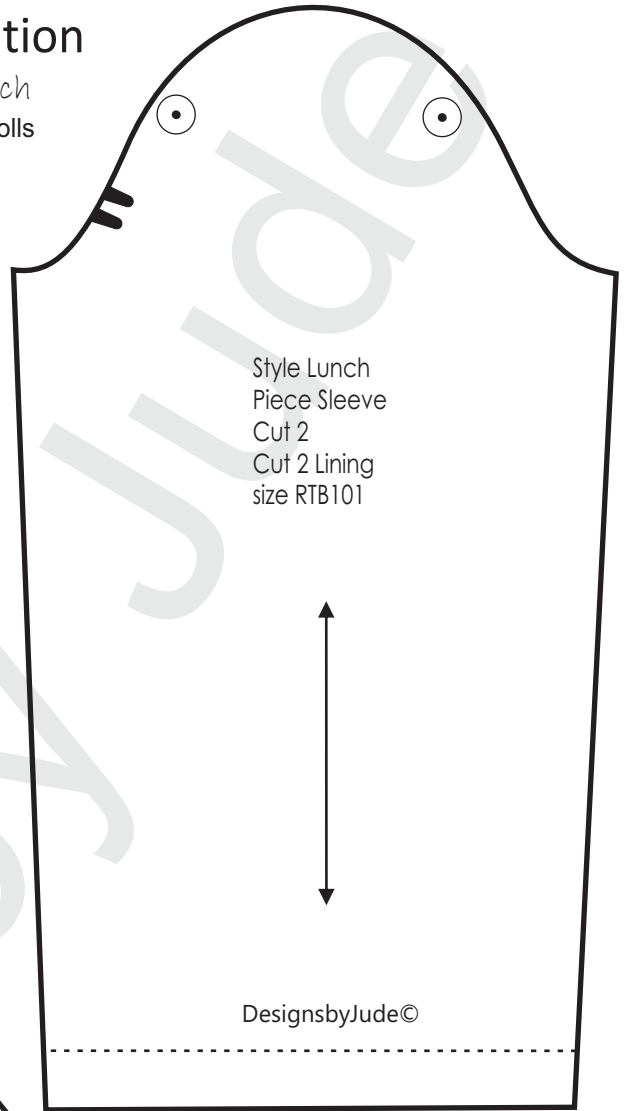
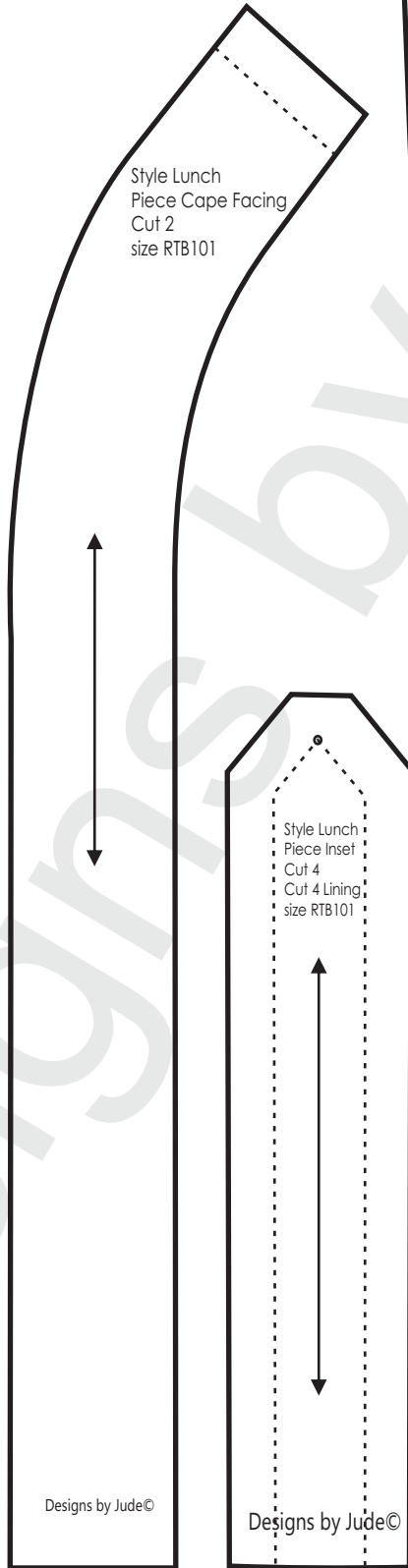
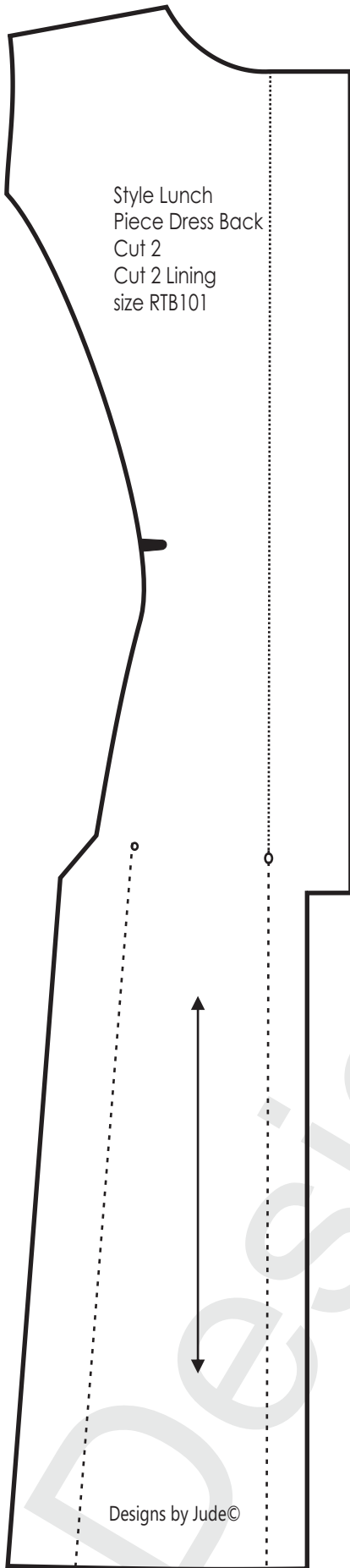


Fold Line
 Stitch Line - - - - -
 Grain Line ← →
 Notch ■ Dot ● Snap ⊙

Seam allowance of 1/4" is already included in the dimensions of the pattern

VDC Collaboration

Ladies Who Lunch
for RTB101 Grace dolls



VDC Collaboration

Ladies Who Lunch

for RTB101 Grace dolls

