

A few notes about PDF patterns. . . .

This PDF pattern prints on regular letter size paper (8.5" x 11").

Patterns containing larger pieces will need to be taped together before cutting out the fabric.

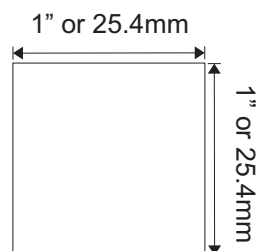
Be advised that this document needs to be printed to it's original scale. Please ensure that the printing options below are **not** selected.

Do Not: Rotate and Center, Fit to Page, Reduce to Fit or adjust the scale of this document.

Refer to the scale marker below to ensure that this copy is printed at the correct scale.

This PDF pattern is not licensed for commercial use and may not be shared, duplicated or distributed.

Designs by Jude, All RIGHTS RESERVED. Personal use only. Not licensed for commercial use.



Designs by Jude

www.fletcherpatterncompany.com



VDC Collaboration
Bucket List
for 16" Ellowyn Wilde Dolls

Designed by
Tamara Casey



VDC Ellowyne Collaboration

Bucket List

For 16" Ellowyne Wilde Dolls

Basic Instructions

You will get the most professional results by following a few recommendations.

- *Use a ¼" seam allowance unless noted otherwise on the pattern piece or instructions. This seam allowance is already included in the dimensions of the pattern.*
- *Press the garment as you work through each step. Press seams open where applicable.*
- *In un-lined garments, finish raw edges with an over-lock or zigzag stitch.*
- *Note that RST = Right Sides Together and WST = Wrong Sides Together.*

Fabric and Notions

Jacket & hat:	light weight denim, cotton, or similar
Lining:	poly, cotton, silk essence
Dress:	cotton
Notions:	4/0 snap sets, tiny buttons, matching thread, and lace trim
Dress	

1. Sew a vertical seam ½" from the folded edge on the right side of the dress's front bodice. Press flat.
2. Cut 2 pieces of lace to sandwich under each folded edge and topstitch.
3. Sew the darts in the dress's front bodice piece. Press darts to the side.
4. Sew the dress bodice front and dress bodice back sections together at the shoulder seam.
5. Press the seams open.
6. Sew the darts in the dress's front bodice lining. Press the darts to the side.
7. Sew the bodice back lining pieces to the bodice front lining at the shoulder seams. Press open.
8. RST, pin the lining to the dress bodice.
9. With the lining side up, sew around the neck edge, down the left back opening, and both armhole openings.
10. Clip and trim the seam allowance.
11. Turn the bodice right side out by passing the bodice back sections to the front through the shoulder channels.
12. Press the bodice.
13. Pin the front bodice to the front lining and the back bodice to the back lining, matching the underarm seam. Sew the side seams.
14. Turn the lining edge up ¼" and press.
15. Finish the sides of the dress skirt with a zigzag stitch.
16. Apply lace and hem the lower edge of the dress skirt.
17. Run a gathering stitch along the waist edge of the skirt.
18. Pull the gathers to fit the dress bodice.
19. RST, pin the skirt to the bodice and sew the waist seam.
20. Press the seam up.
21. Hand-finish the bodice lining to the waist seam.
22. Zigzag the bodice and bodice lining together at the right back opening.
23. Sew the center back seam of the dress from the hem edge to the dot on the pattern.
24. Press the seam.
25. Fit to the doll and mark the placement for the snaps.
26. Sew the snaps in place. Add tiny buttons to the bodice to finish.

Cropped Jacket

1. Sew the darts in the jacket's side front pieces. Press the darts down.
2. RST, sew the side front sections to the front sections. Press seams open.
3. Sew the jacket side back sections to the jacket back section. Press seams open.
4. Sew the jacket front sections to the jacket back section at the shoulder. Press seams open.
5. RST, sew the collar pieces together, leaving the neck edge unsewn.
6. Trim the seam, turn the collar right side out, and press. Baste the raw edge of the collar.
7. Matching centers, pin the collar to the neck opening and baste in place. The jacket will extend past the finished edge of the collar on each side.
8. Prepare the pockets by folding each side and point edges of the pocket pieces in ¼" and press.
9. Topstitch the pocket.
10. Fold the top edge of the pocket pieces down ¼" and press.

11. Pin pockets to jacket front and sew in place.
12. RST, sew the sleeve back sections to the sleeve front sections stopping at the dot.
13. Press the seam open. Topstitch the sleeve vents.
14. Run a gathering stitch at the sleeve cap between the notches.
15. Pull gently to help ease the sleeve into place.
16. Pin the sleeves to the armhole openings and sew them in place. Trim the seam allowance.
17. RST, sew the jacket front sections to the jacket back section at the side seams. Press the seams open.
18. Turn the jacket right side out.
19. Fold each cuff in half with the wrong sides together. Sew both short edges. Clip seams.
20. Turn cuffs right side out and topstitch if desired.
21. RST, pin cuffs to sleeves matching up the finished edges. Sew in place.
22. Trim down the seam allowance. Press seams up.
23. Repeat the above applicable steps to construct the jacket lining.
24. RST, pin the lining to the jacket and sew up to the front opening and around the neck.
25. Clip and trim the seam allowance.
26. Turn the jacket right side out and press. Baste the lining to the jacket at the waist.
27. Turn one long edge of the waistband up $\frac{1}{4}$ " and press.
28. Pin the waistband to the jacket with $\frac{1}{4}$ " of the waistband extending past the finished edge of the jacket on both sides. Sew in place.
29. Fold the extra waistband in, turn up the folded edge and hand finish to the lining.
30. Hand-finish the sleeve lining to the cuffs.
31. Fit the jacket to your doll and mark the placement for the snaps.
32. Sew snaps and add decorative buttons to finish.

Bucket Hat

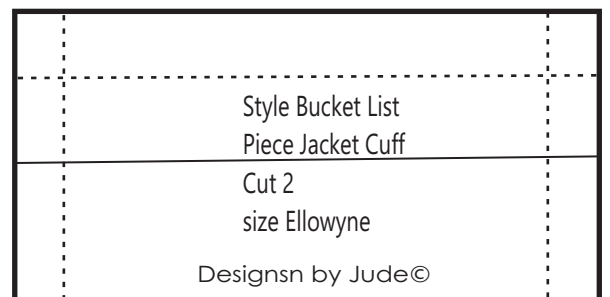
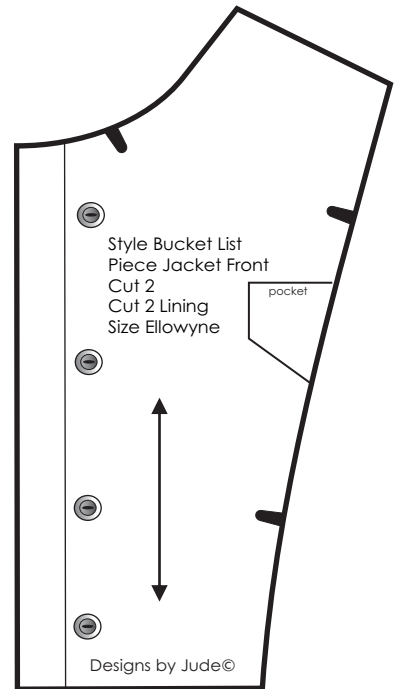
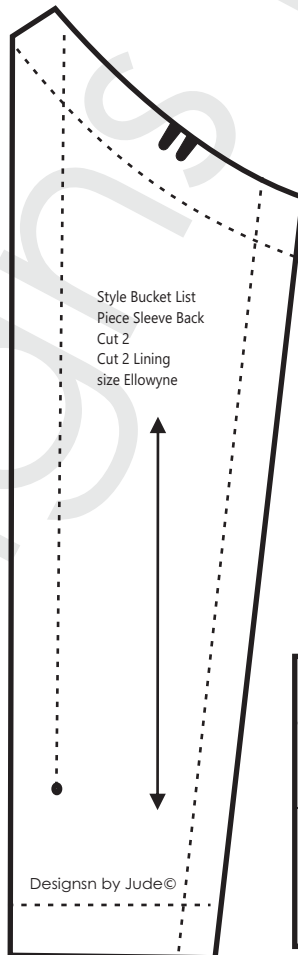
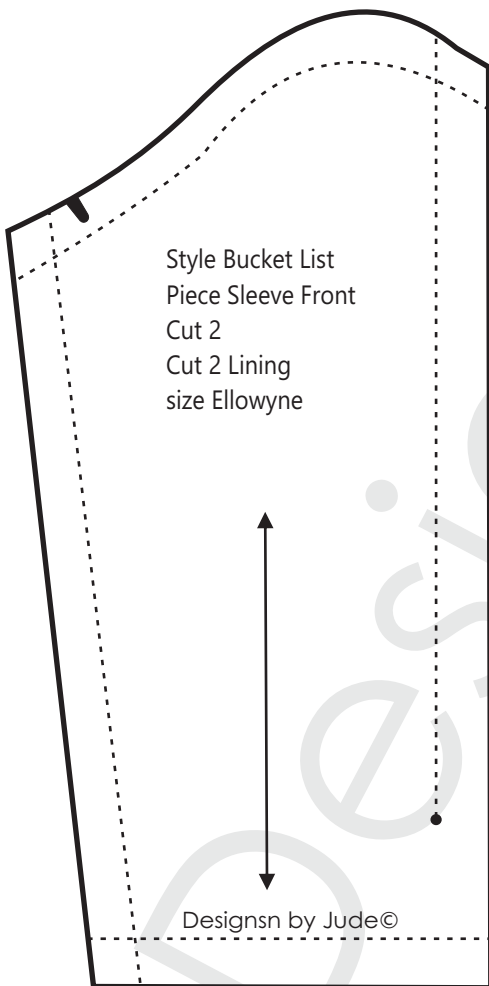
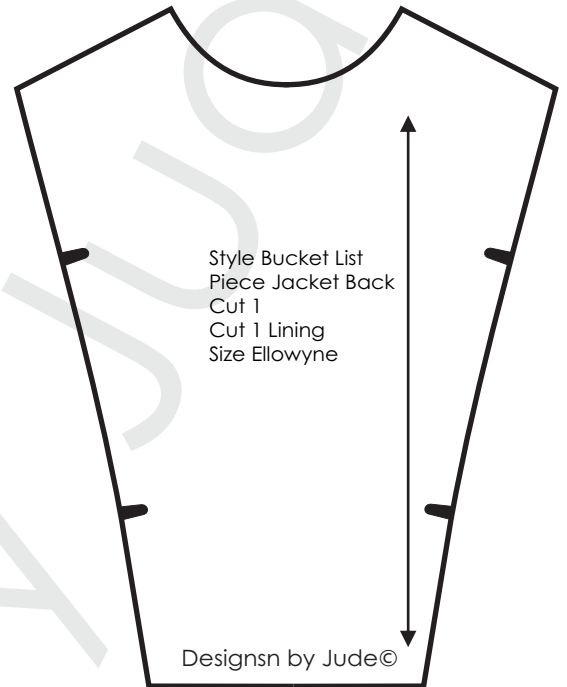
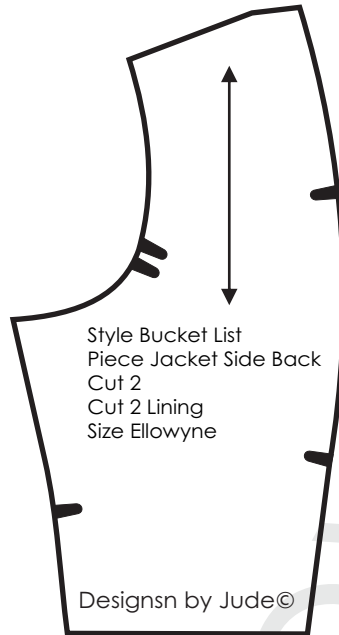
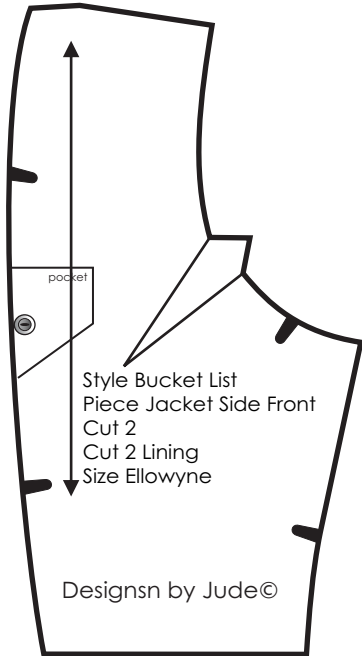
1. Take small clips into the curved edges of the hat top, crown, and inner brim.
2. RST, sew the center back seam of the crown and crown lining. Press the seams open.
3. RST, pin the hat top to the crown and sew them together. Repeat with the lining pieces.
4. Trim the seam allowance and press the seams.
5. RST, sew the center back seam of the brim and brim lining. Press the seams open.
6. Right sides together and match the center back seams. Sew the brim to the hat crown.
7. Repeat with the lining pieces.
8. Press the seams up. Topstitch near the seam if desired.
9. RST, pin the hat lining to the hat.
10. Sew all the way around the brim, leaving a small opening for turning the hat right side out.
11. Trim the seam allowance and turn the hat.
12. Press the brim, tuck the opening in and hand finishing the opening.
13. Topstitch the brim if desired.

There is a sewing tutorial for this pattern on our Designs by Jude YouTube channel.
www.fletcherpatterncompany.com

VDC Collaboration

Bucket List

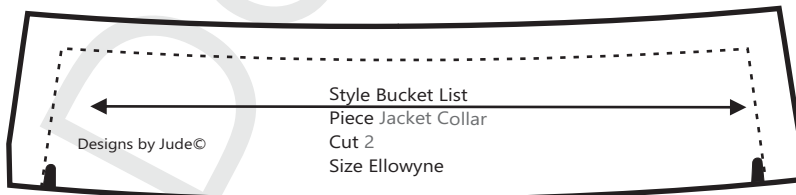
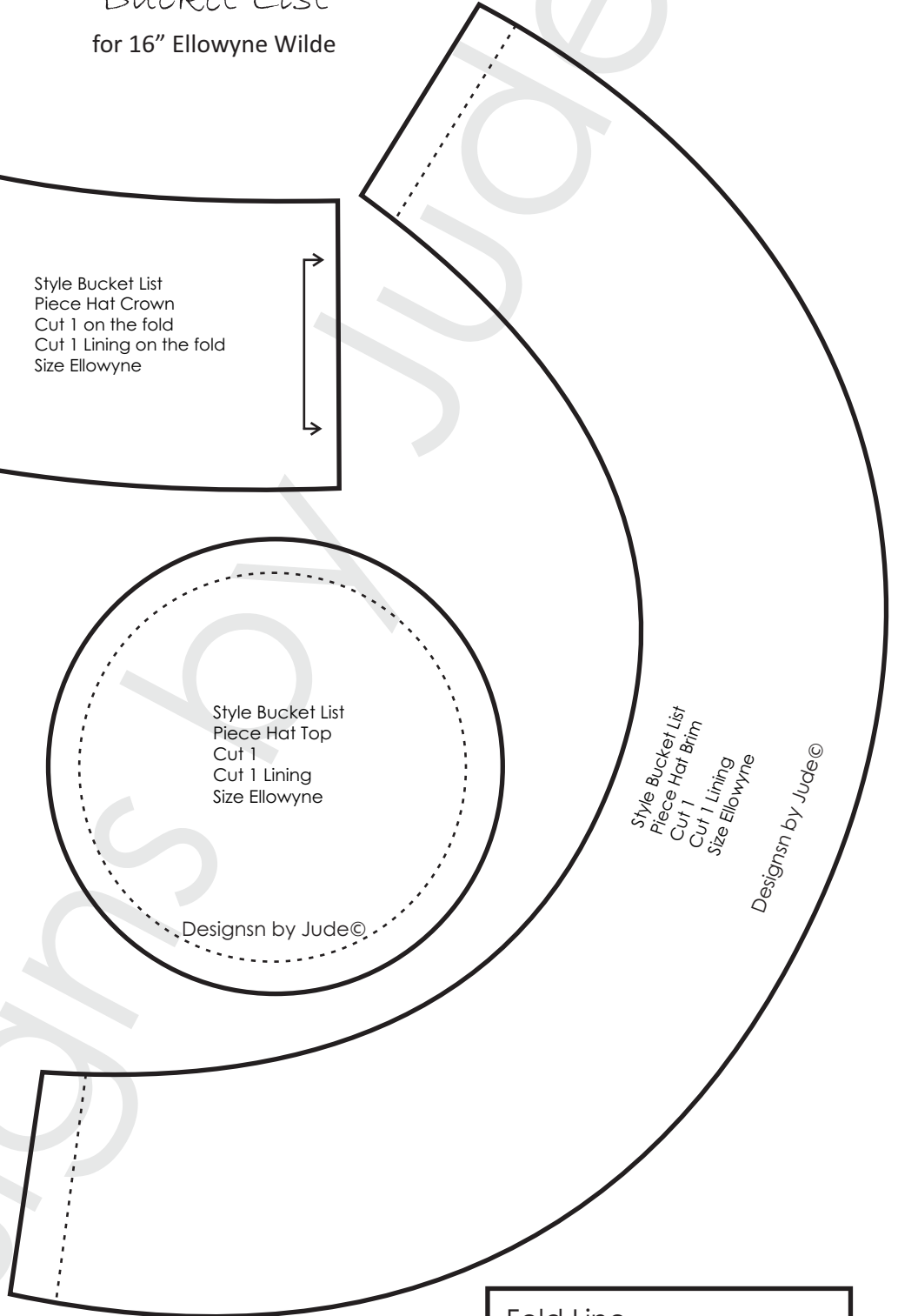
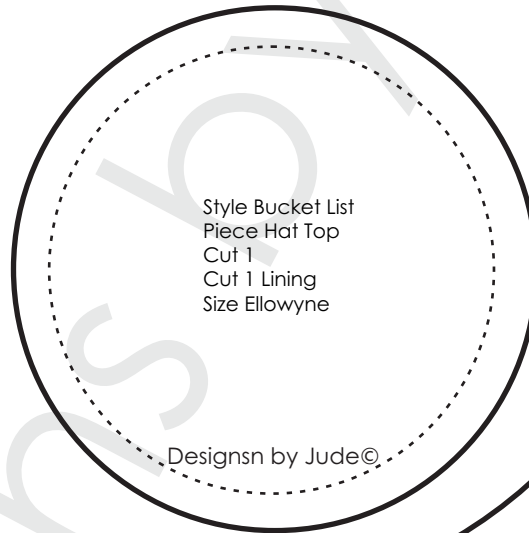
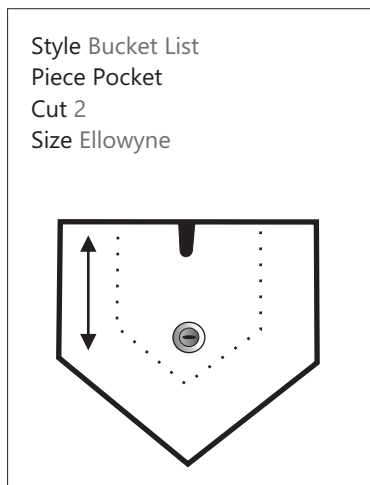
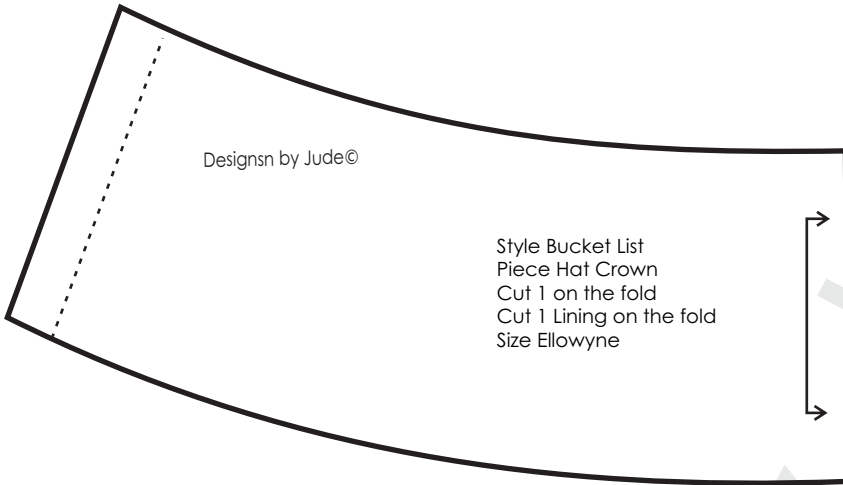
for 16" Ellowyne Wilde



VDC Collaboration

Bucket List

for 16" Ellowynne Wilde



Fold Line
Stitch Line - - - - -
Grain Line ← →
Notch ■ Dot ⊙ Snap ⊗

Seam allowance of 1/4" is already included in the dimensions of the pattern

