

A few notes about PDF patterns. . . .

This PDF pattern prints on regular letter size paper (8.5" x 11").

Patterns containing larger pieces will need to be taped together before cutting out the fabric.

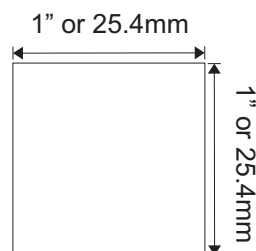
Be advised that this document needs to be printed to it's original scale. Please ensure that the printing options below are **not** selected.

Do Not: Rotate and Center, Fit to Page, Reduce to Fit or adjust the scale of this document.

Refer to the scale marker below to ensure that this copy is printed at the correct scale.

This PDF pattern is not licensed for commercial use and may not be shared, duplicated or distributed.

Designs by Jude, All RIGHTS RESERVED. Personal use only. Not licensed for commercial use.



Designs by Jude

www.fletcherpatterncompany.com



VDC Club Grace

Backyard BBQ
for 16.5" RTB101 Dolls



Designed by

Tamara Casey

\$12.95



VDC Club Grace Collaboration

Backyard BBQ

For 16.5" RTB101 Body Dolls

Basic Instructions

You will get the most professional results by following a few recommendations.

- Use a ¼" seam allowance unless noted otherwise on the pattern piece or instructions. This seam allowance is already included in the dimensions of the pattern.
- Press the garment as you work through each step. Press seams open where applicable.
- In un-lined garments, finish raw edges with an over-lock or zigzag stitch.

Note that RST = Right Sides Together and WST = Wrong Sides Together.

Fabric and Notions

Romper: cotton blend, poplin, light-weight denim

Notions: 4/0 snap sets, 1/8" elastic, matching thread

*note: the construction for the shorts or pants is the same. The directions will use the word "pants" to mean both.

Sleeveless Romper:

1. Sew the darts in the bodice back pieces. Press the darts to the center.
2. With the right sides together, sew the bodice side front pieces to the bodice front. Clip seam and press.
3. Sew the bodice back pieces to the bodice front at the shoulder seams. Press the seams open.
4. Repeat the above three steps with the bodice lining pieces.
5. RST, pin the lining to the bodice.
6. With the lining side up, sew each armhole, around the neck and down the left back opening stopping ¼" from the waist.
7. Clip and trim the seam allowance.
8. Turn the bodice right side out by passing the back pieces to the front through the shoulder channel.
9. Press the bodice.
10. To sew the side seams, open up each side and place the front bodice to the back bodice and the front lining to the back lining matching the armhole seam. Sew in place.
11. Turn the hem edge of the bodice lining up ¼" and press.
12. Sew the darts in the pants' back pieces. Press to the side.
13. RST, position a pocket on each pant front and pants back piece and sew it at the side seam.
14. Clip in toward the seam allowance at the base of the pockets and press the pockets out to the side.
15. With the pockets pressed out and RST, pin the pant fronts to the pant backs and sew the side seams.
16. Press the seams open and the pocket assembly to the front.
17. Baste the pockets at the waist edge.
18. RST, sew the center front seam of the pants. Clip the seam and press it open.
19. Sew the darts in the pants back lining pieces. Press to the side.
20. Sew the center front seam of the pants lining.
21. Sew the back pants lining sections to the front pants lining at the side seams. Clip and press seams open.
22. RST, pin the pants lining to the pants and sew the hem edge. Fold the lining in and press the hem.
23. Baste the lining to the pants at the waist edge.
24. Zigzag the left and right back opening of the pants.
25. Run a gathering stitch at the waist of the pants between the pockets. Gently pull the gathers.
26. RST, pin the bodice to the pants matching the side seams and the front seam of the pants to the center of the bodice.
27. Sew the waist seam. Trim the seam allowance and press the seam up.
28. Zigzag the right back opening of the bodice and bodice lining together.
29. Hand-finish the bodice lining to the waist seam.
30. RST, sew the center back seam of the pants from the raw edge to the dot as indicated on the pattern. Clip seam.
31. RST, matching the crotch seams, sew the inseam of the romper from hem to hem. Press the seam open.
32. Turn the romper right side out.
33. Fit the romper to the doll and mark the placement for the snaps.
34. Sew the snaps in place.
35. Fold the sash in half with the right sides together.
36. Sew all the way around the raw edges, leaving a small opening to turn it.
37. Trim the seam allowance, turn the sash, and press.

38. Hand finish the opening used to turn it and press.

Romper with Sleeve & Neck Ruffle:

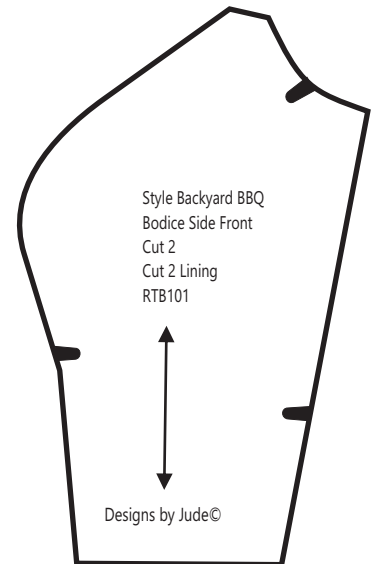
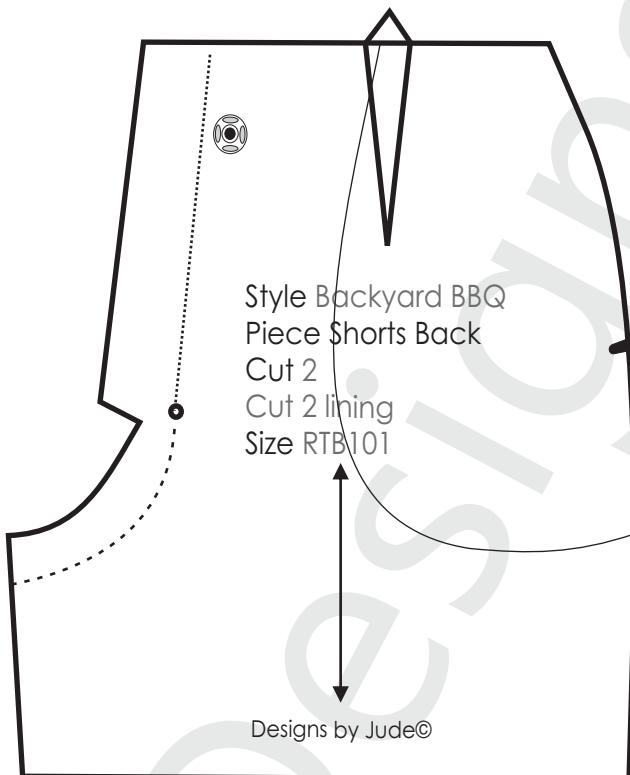
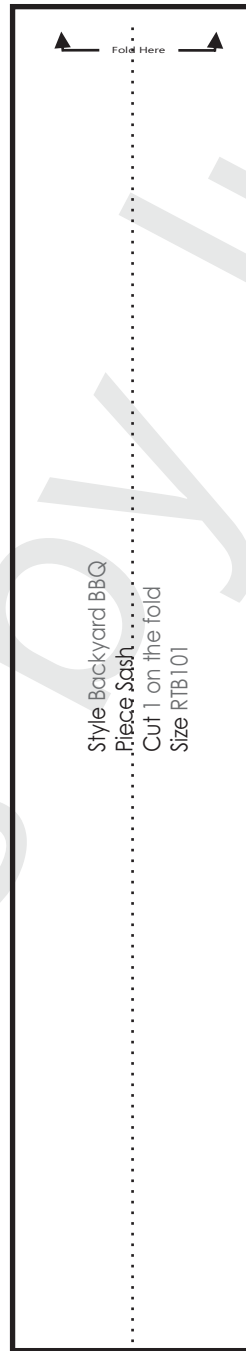
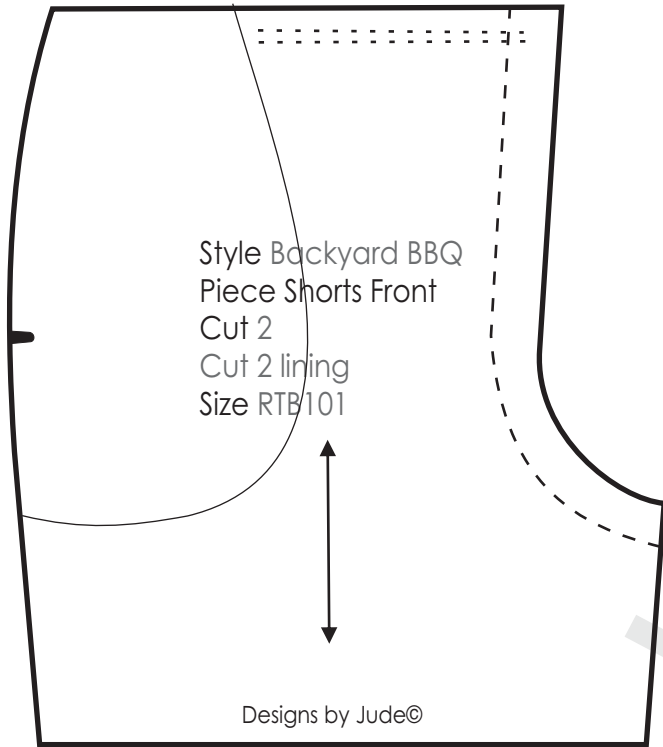
1. Sew the darts in the bodice back pieces. Press to the side.
2. Sew the bodice side front pieces to the bodice front. Press seams open.
3. Sew the back pieces to the front at the shoulder seams. Press seams open.
4. Sew a narrow hem on both sleeves.
5. Run a gathering stitch along both sleeve caps.
6. Pull the gather to fit the armhole openings.
7. Pin the sleeves to the armhole openings and sew them in place. Trim down the seam allowance.
8. Create a narrow hem along one long edge and the two short ends of the neck ruffle.
9. Run a gathering stitch along the unfinished edge of the neck ruffle. Pull the gathers to fit the neck opening.
10. Matching centers, pin the neck ruffle right side up along the neck opening, leaving $\frac{1}{4}$ " of the bodice past the finished edge of the ruffle on each side. Baste in place.
11. Place $\frac{1}{8}$ " elastic $\frac{1}{4}$ " above the finished edge on the wrong side of each sleeve. Tack in place and then pull the elastic toward you and secure it with a small zig-zag stitch to create the sleeve gathers.
12. RST, sew each side seam of the bodice and press the seams open.
13. Sew the darts in the bodice back lining pieces. Press them to the side.
14. Sew the bodice side front lining pieces to the bodice front lining. Press the seams open.
15. Sew the lining back pieces to the front at the shoulder seams. Press the seams open.
16. Zigzag around the raw edges of the armholes of the lining.
17. Sew the lining back pieces to the front at the sides. Press the seams open.
18. Turn the waist edge of the lining up $\frac{1}{4}$ " and press.
19. RST, pin the lining to the bodice.
20. With the lining side up, sew around the neck and down the left opening stopping $\frac{1}{4}$ " from the waist.
21. Clip and trim the seam allowance, turn the bodice right side out, and press.
22. Sew the darts in the pants' back pieces. Press to the side.
23. RST, position a pocket on each pant front and pants back piece and sew it at the side seam.
24. Clip in toward the seam allowance at the base of the pockets and press the pockets out to the side.
25. With the pockets pressed out and RST, pin the pant fronts to the pant backs and sew the side seams.
26. Press the seams open and the pocket assembly to the front.
27. Baste the pockets at the waist edge.
28. RST, sew the center front seam of the pants. Clip the seam and press it open.
29. Sew the darts in the pants lining pieces. Press to the side.
30. Sew the center front seam of the pants lining.
31. Sew the back pants lining sections to the front pants lining at the side seams. Clip and press seams open.
32. RST, pin the pants lining to the pants and sew the hem edge. Fold the lining in and press the hem.
33. Baste the lining to the pants at the waist edge.
34. Zigzag the left and right back opening of the pants.
35. Run a gathering stitch at the waist of the pants between the pockets. Gently pull the gathers.
36. RST, pin the bodice to the pants matching the side seams and the front seam of the pants to the center of the bodice.
37. Sew the waist seam. Trim the seam allowance and press the seam up.
38. Zigzag the right back opening of the bodice and bodice lining together.
39. Hand-finish the bodice lining to the waist seam.
40. RST, sew the center back seam of the pants from the raw edge to the dot as indicated on the pattern. Clip seam.
41. RST, matching the crotch seams, sew the inseam of the romper from hem to hem. Press the seam open.
42. Turn the romper right side out.
43. Fit the romper to the doll and mark the placement for the snaps.
44. Sew the snaps in place.
45. Fold the sash in half with the right sides together.
46. Sew all the way around the raw edges, leaving a small opening to turn it.
39. Trim the seam allowance, turn the sash, and press. Hand finish the opening used to turn it.

There is a sewing tutorial for this pattern on our Designs by Jude YouTube channel.

VDC Club Grace Collaboration

Backyard BBQ

for 16.5" RTB101 Grace



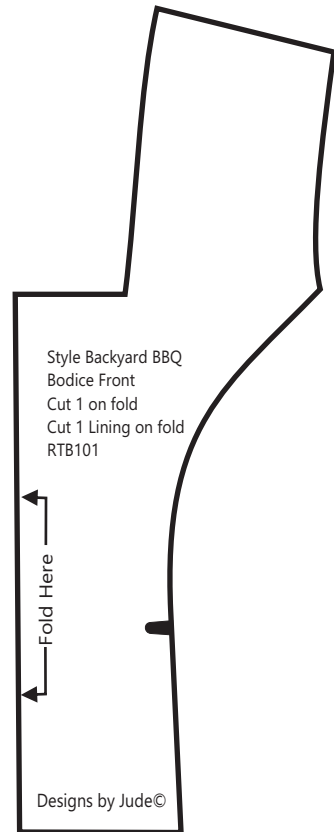
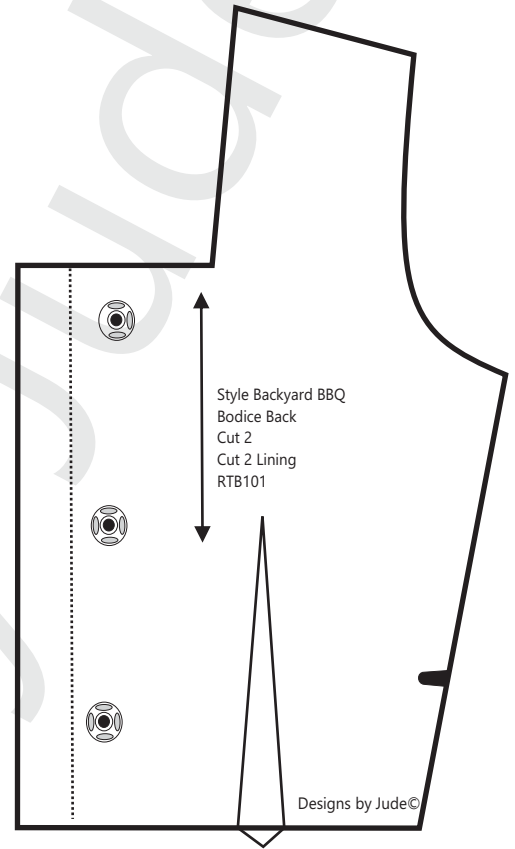
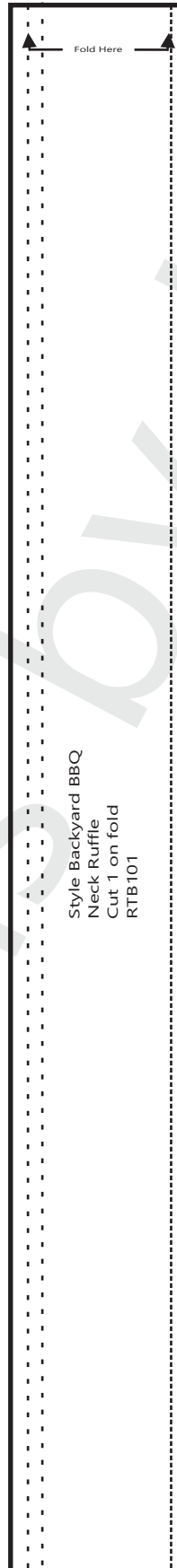
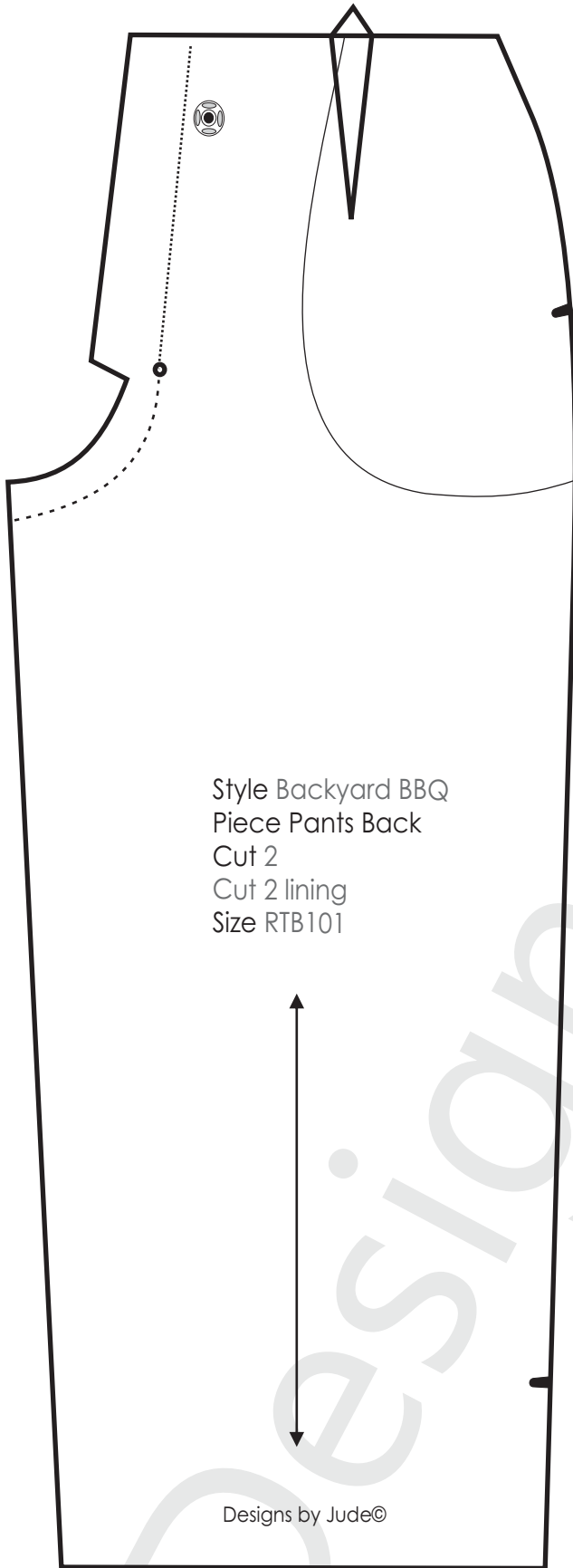
Fold Line
Stitch Line - - - - -
Grain Line ← →
Notch ■ Dot ⊙ Snap ⊗

Seam allowance of 1/4"
is already included in the
dimensions of the pattern

VDC Club Grace Collaboration

Backyard BBQ

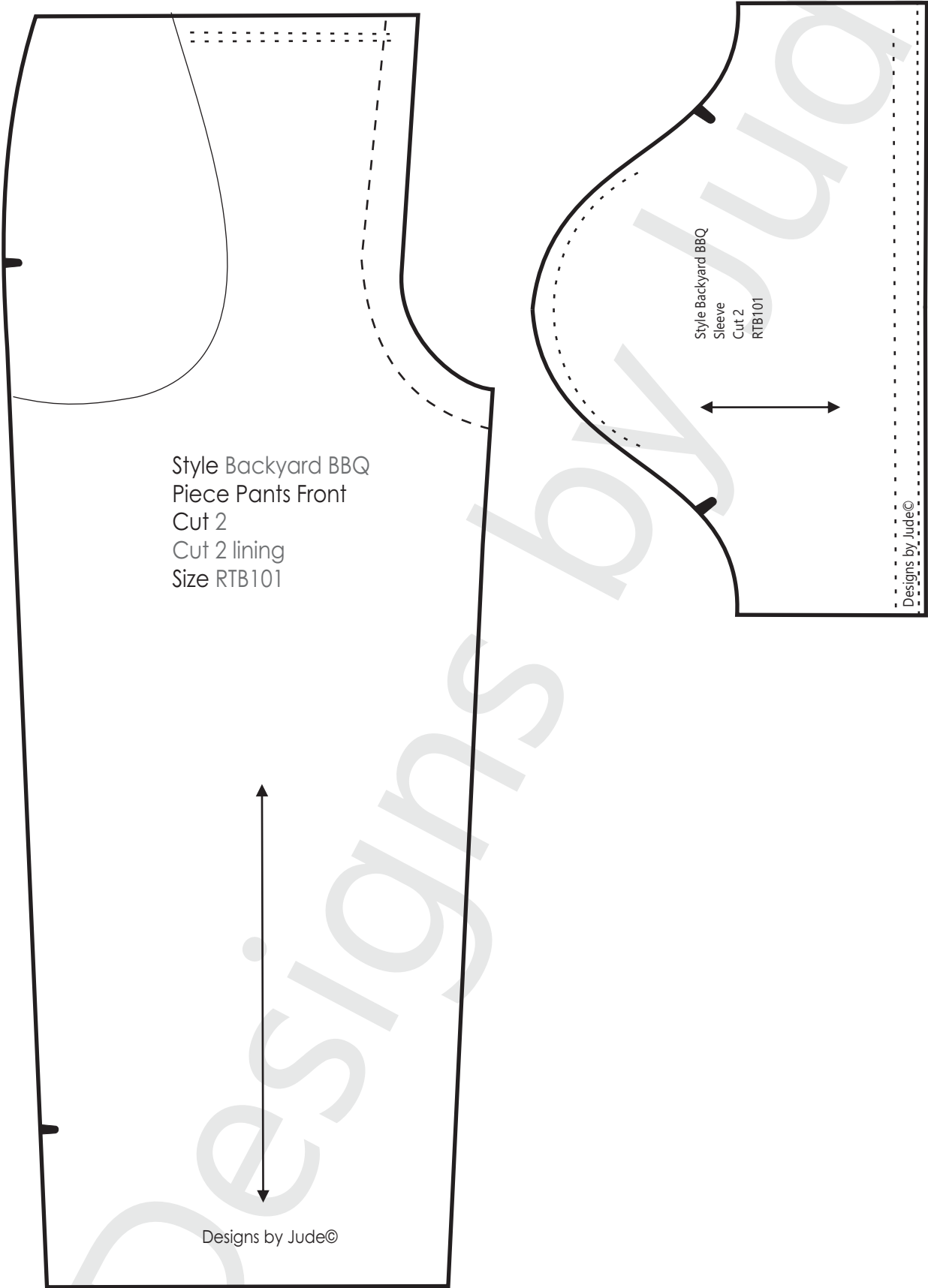
for 16.5" RTB101 Grace



VDC Club Grace Collaboration

Backyard BBQ

for 16.5" RTB101 Grace



Style Backyard BBQ
Piece Pants Front
Cut 2
Cut 2 lining
Size RTB101

Style Backyard BBQ
Sleeve
Cut 2
RTB101

Designs by Jude©

Designs by Jude©