

Shirley Temple Trunk Dress Pattern & Instructions

*This dress pattern was inspired by a picture found of a dress in a Shirley Temple doll trunk.
These instructions are for both 13 inch and 18 inch Composition Shirley Temple dolls.*



**Pattern Created by Anna Wenzlick of
Doll Clothes Through the Ages
For the Virtual Doll Convention March 2021**

Shirley Temple Trunk Dress Pattern Instructions

This dress pattern was inspired by a picture found of a dress in a Shirley Temple doll trunk.

These instructions are for both 13inch and 18inch Composition Shirley Temple dolls



Pattern Created by Anna Wenzlick of

Doll Clothes Through the Ages

For the Virtual Doll Convention March 2021

List of Items needed to make this dress:

¼ yard of desired fabric

1 package of double fold bias tape in contrasting or coordinating colors to the fabric

(42in of double fold bias is needed for the 13inch Shirley Dress)

Needle and thread

Select Closure option

Optional 1 or 2 buttons in baby or shirt size for button closure

Optional 2 metal snaps for closure if buttons are not desired

Optional Sewing Machine

Step 1.

Cut out your pattern pieces in the desired size.

Optional Step 2. Finishing edges

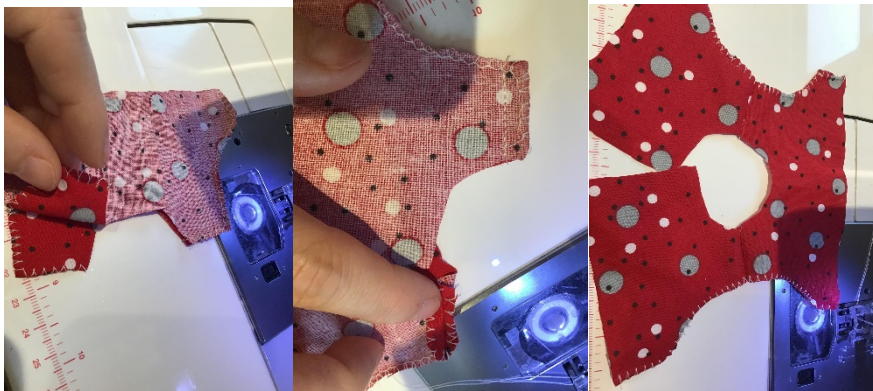
Finish the shoulder edges, the arm holes, and bodice lower edge, and bodice sides. Finish your sleeve upper and side edges, and the upper and side edges of your skirt. Can be done in zigzag stitch on your machine, or with a whip stitch by hand.



Finishing the edge of your material prevents stretching and fraying of the fabric while you work later on.

Step 2.

Place and pin shoulder seams together with the right side of the fabric facing inward toward each other. Stitch a straight seam across the shoulders sewing them together in the $\frac{1}{4}$ inch allowance. Press seam open to lay flat.



Step 4. Bias

Unfold your bias till you have both inner raw edges visible. Take one of the inner bias edges and line it up to your raw edge of your fabric placing the raw edges together on the **WRONG** side of the fabric so that when you fold the bias back together how it was it encases the seam fully.

Stitch the raw edge to the inner raw edge of your fabric. Staying within the seam allowance provided by the bias fold.

Fold the bias back into its original shape encasing the outer edge of your material. Stitch along the top edge of the bias on the front of your dress material. Encasing your seam edge in the bias. Apply this to the neckline, the exterior sleeve edges, and the hem of your skirt.





Bias to neckline and Bias to skirt hem

Step 5. Sleeves

Gather the upper sleeve edge.

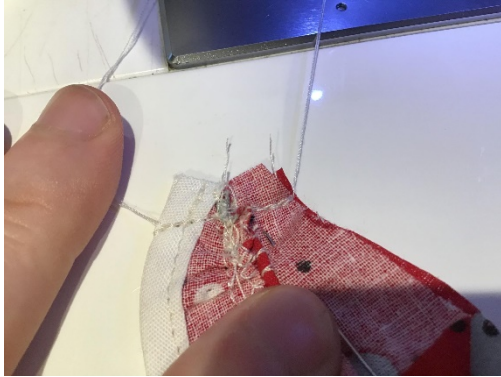
Optional Technique: Apply a long stitch for you to gather the upper edge of your sleeve. Knot one end (or back stitch 2-3 times) and cut the thread near the edge of the fabric on the knotted side, leave a 4inch tail on the unknotted side for pulling.

Pin your sleeve sides to the arm hole gathering your sleeve between the pins till your sleeve fits perfectly along the edge of the arm hole. Pin fully in place. Stitch down with straight stitch, carefully stitching along the curve.

Note: I find going slowly along the curve and gently lifting my machine foot and fabric to adjust



Step 6. Pin your sleeves and side seams of your bodice front and back together forming the bodice. Stitch with straight stitch along the flat edge created when pinning the bodice front and back together along the side of the sleeve and side seam.

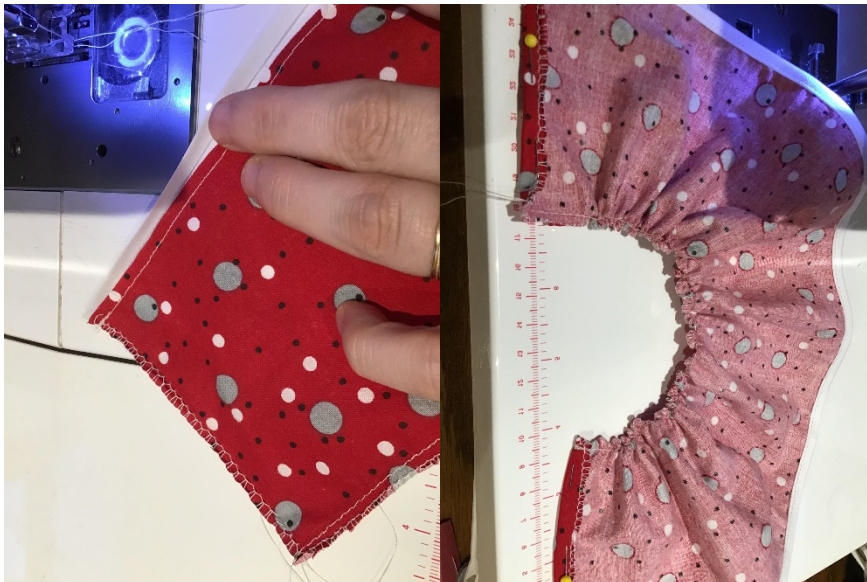


Step 7. Skirt

Gather the top edge of your skirt.

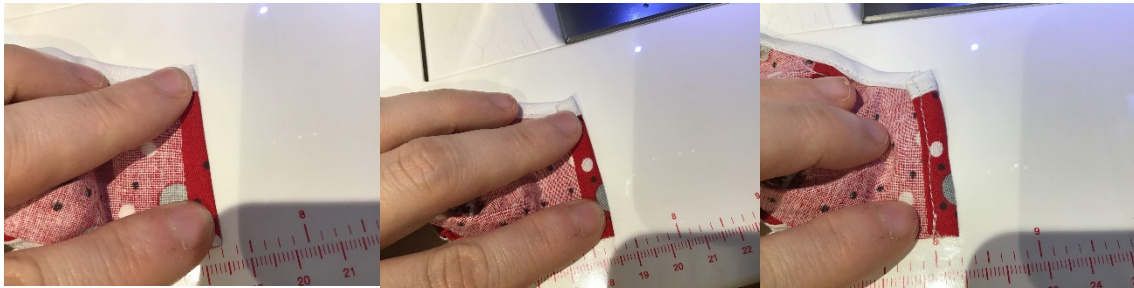
Optional Technique: Apply a long stitch for you to gather the upper edge of your skirt. Knot one end (or back stitch 2-3 times) and cut the thread near the edge of the fabric on the knotted side/back stitched side, leave a 4inch tail on the unknotted side for pulling and final knotting.

Fold $\frac{1}{4}$ in back on one edge facing the interior of the skirt. (or double fold if desired) gather the skirt to the length of the bodice lower making sure to leave $\frac{1}{4}$ inch allowance to fold over



Step 8. Bodice Back Seam

Fold your bodice back over ¼ inch towards the inside of the bodice. Repeat enclosing the raw edge. Stitch a straight stitch down the edge of the fold. (or invisible hem if by hand)



Step 9. Combined Bodice and Skirt

Pin your gathered skirt edge with your folded back edge to your bodice with right sides of the fabric facing each other. Stitch in place with a straight stitch.

Step 10. Skirt back seam

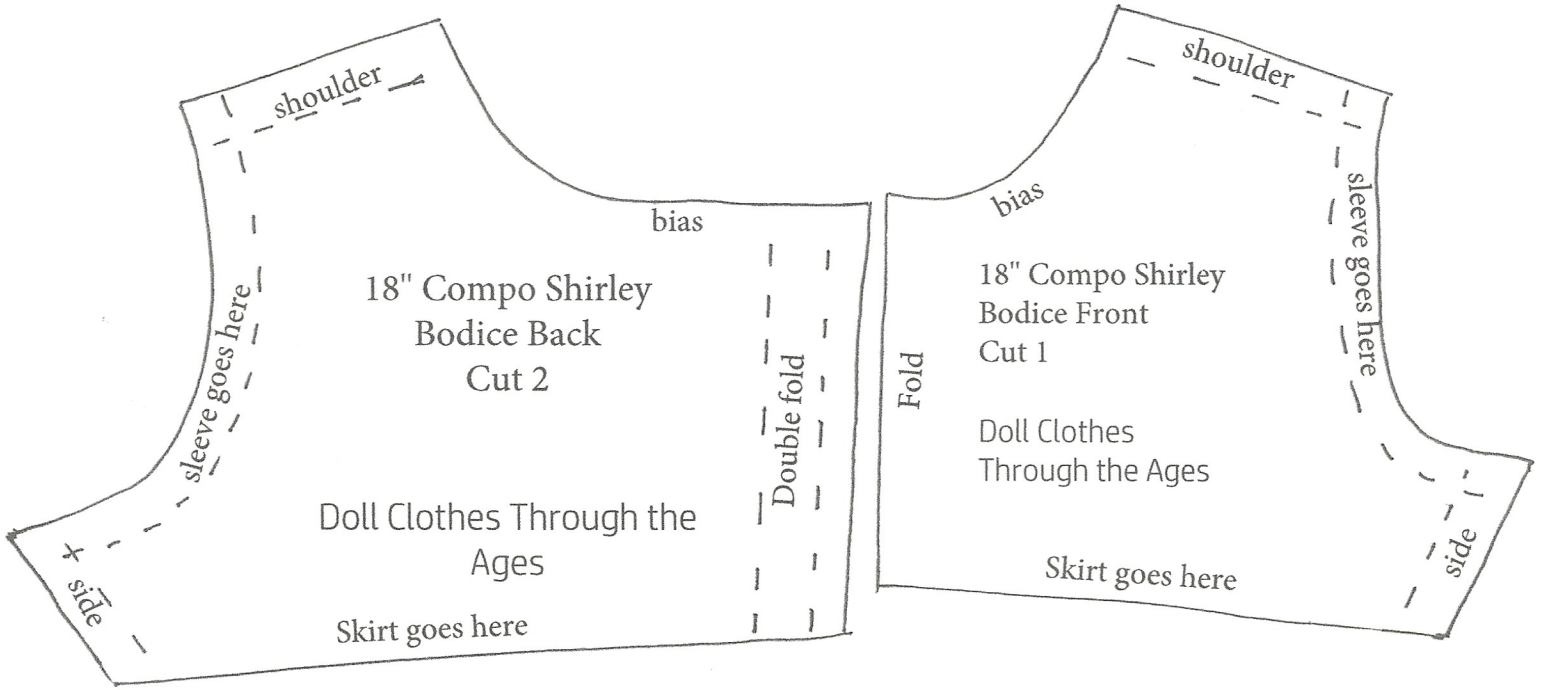
Pin the back of your dress together halfway up the skirt. Stitch with a ¼ in seam allowance up that halfway mark. Press your seam out so that the fabric is lying flat.



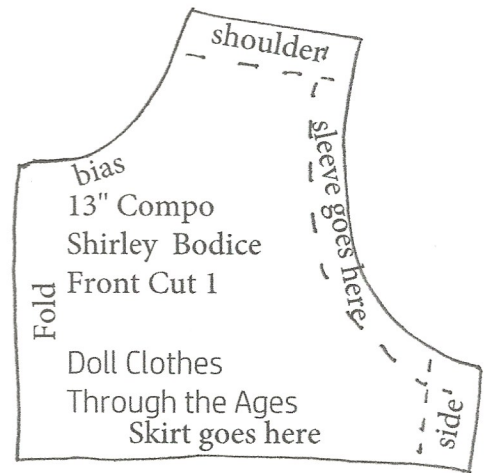
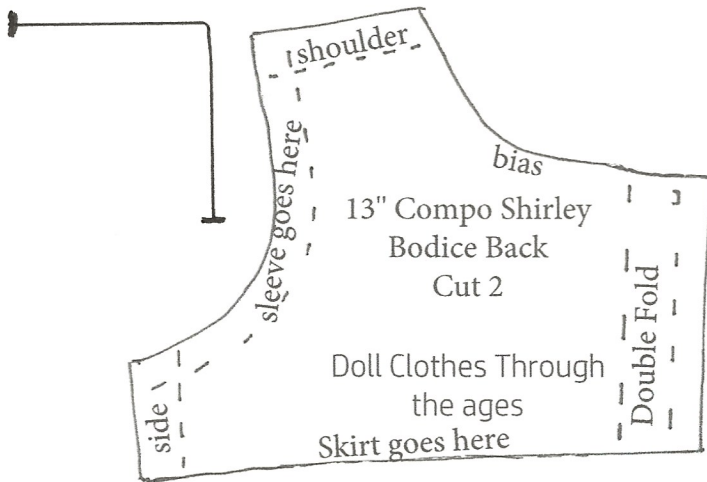
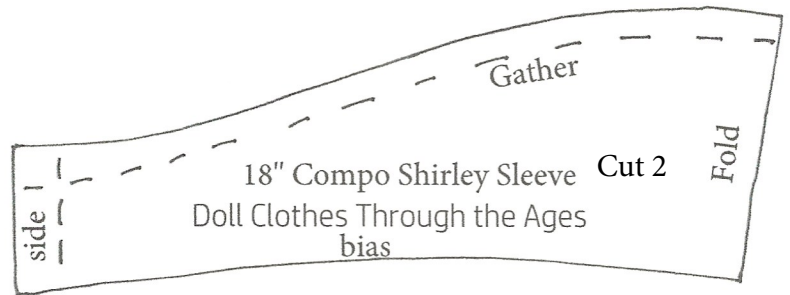
Step 11. Closures

Apply your choice of button and loop closure, button and button hole, or snaps. One at the neckline and one just above where the skirt and bodice are joined at the seam.

You're done! You just made a Shirley Dress!



18" Compo Shirley Skirt Dimensions:
27.5" long 6" deep



13" Compo Shirley Skirt dimensions:
20" long 4" deep

