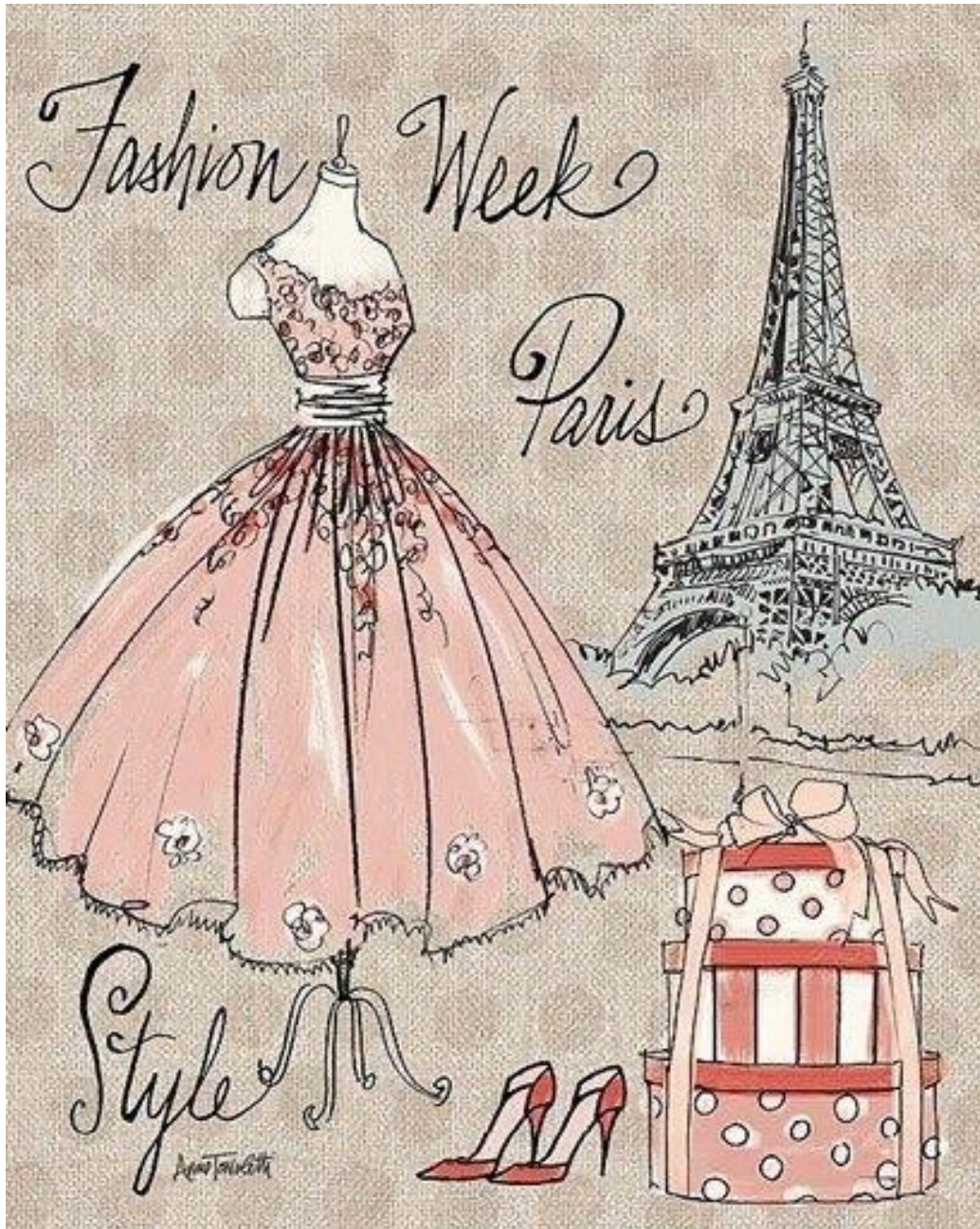


Little Sewing Reference



Virtual Doll Convention

www.virtualdollconvention.com

Created by Linda Wall, AEDMED

Uniquely Yours Porcelain Dolls

www.uniquelyyoursporcelain dolls.com

1-855-51-DOLLS

Use this booklet to write your notes regarding the subject being discussed, while watching the Virtual Doll Convention sewing workshop(s).

Create 3"x 4" samples and attach to the page. Use this reference tool to plan and construct costumes in your future.

Sewing should be fun, relaxing and rewarding. Basic sewing skills are needed together with the knowledge of when and how to use these skills. Some of these skills are transferred to making accessories for our dolls.

"Sewing Does Mend the Soul!"

Happy creating,

Linda Wall
Uniquely Yours Porcelain Dolls

Quick Review of Previous Techniques
Discussed in other Virtual Doll Conventions

Running Straight Stitch (by hand)

Machine Straight Stitch

Overcasting and Zigzag (modern only)

Whip Stitch

Straight of the Fabric/Cutting Layout

Buttonhole Stitch

Using the Proportional Wheel

New Techniques for the
Virtual Doll Convention
January 8-12, 2020

Clip to 'dot'

Even skirt bottom before hemming

Trimming seam allowances (why/why not)

Snaps

Notches/Pinking Shears

Buttons with shanks

Curling Feathers

Finishing Sole Leather



**16" Robert Tonner doll
NOT 'Grace' the
Virtual Doll Convention
January 8-12, 2020 Doll**



**Costume Instructions for the
Virtual Doll Convention
January 8-12, 2020
16" Doll 'Grace'
Designed by Robert Tonner**

General Supplies:

Cream fine sewing thread - Aurifil
Hand sewing needle – Straw #11
Silk straight pins
6" seam gauge
Bodkin
Small and large fabric scissors
Craft scissors
Emery board
Grip glue
Pencil and ball point pen
Sewing machine (optional)

Dress Supplies

12" x 54" Swiss 100% Lined Cotton Pique Pink
12" x 54" Swiss 100% Cotton Batiste Pink
5 Pearl buttons with shanks – 6mm
3 Brass snaps – size 4/0

Please read directions before cutting. Make sure the 1" on the patterns measures 1". If it measures 15/16" ADD 3/8" to bottom of dress pattern pieces, before cutting fabric.

Definitions: ALL seam allowances are ¼" unless stated differently.

WWST With wrong sides together

WRST With right sides together

RS Right side

WS Wrong side

FS Finished seam

(WWST stitch seam, trim, press, stitch enclosing first seam WRST)

Dress Instructions

- WRST stitch fabric pieces starting at the top of each garment piece, in the following order:
 - Fronts to both side fronts
 - Back to both side backs
 - Side seams
 - Shoulder seams, making sure to match the seams on the front and back pieces.
- Press fabric seams together toward side seams, or back.
- Repeat stitching for lining except pressing seams in opposite direction (forward).
- Trim seams.
- WRST stitch fabric and lining from 'dot' on skirt front, up front, around neck, back down other side of front to 'dot'. Trim seam allowance, clip seam allowance to 'dot' and turn garment to right side.
- Press neck edge making sure that the seam is on the edge.
- WRST stitch skirt fabric from bottom up to 'dot', turn on previous stitching, and stitch lining fronts to bottom of skirt.
- Fit on doll.
- Fold under the right side of front, as indicated on pattern, about ½". Fold should be straight down from previously pressed top edge. Press fold in skirt, forming skirt placket.
- Even bottom of skirt fabric. Refer to Instructions in New Techniques Section in front of book.
- Turn ½" to WS of skirt. Press. Carefully, trim lining even with the pressed edge.
- Turn under 1/4" to WS of lining. Hem stitch lining to fabric hem.

Sleeves

- Hand baste lining and fabric around armholes.
- Trim off ¼" on bottom lining of both sleeves.
- WRST stitch lining to fabric across bottom of sleeve.
- Trim seam allowance and press toward fabric.
- WRST stitch one continuous seam starting on fabric armhole and ending on lining armhole. Trim seam allowance.

- Turn sleeves to RS. Make sure the edges of lining and fabric are even at the top.
- Hand baste around armhole on sleeve.
- Make sure that the doll's hand will go through the cuff.
- WRST pin sleeves in armholes of dress, make sure that the 'notch' is at the back.
- Hand stitch sleeves in, trim seam allowances and overcast seams.
- Fold the 'flap' on the right front to WS. Hand stitch across the top of the 'flap'.
- Snaps and Buttons
- Mark placement of snaps and buttons on dress and sleeves, referring to patterns.
- Refer to new techniques portion of the video and booklet for how to instructions and helpful hints.

Hat Supplies

6" x 6" Swiss 100% Lined Cotton Pique Pink
 1 ¼" x 9" Swiss 100% Cotton Batiste Pink
 5" x 5" buckram
 2" of ¼" twill tape
 13" covered white hat wire (cut in two 6 1/2" pieces)
 1" x 7" white felt and 2" x 2" felt for top
 Assorted colored feathers
 Extra Strong thread
 Large eyed needle
 Scalpel or Exacto knife

Hat Instructions

- Trace the top of hat pattern oval to one side of buckram.
- Bend one piece of covered hat wire the shape of the oval, overlapping one wire to the inside of the top of the oval.
- With extra strong thread whip stitch close to and over the wire, securing to buckram.
- Trim buckram 3/4" from outside edge of the wire.
- Bend buckram over the wire (wire on inside) making a 45-degree angle, trying not to make any sharp points.
- Form and pin 'darts' around the hat form. Mark underneath fold of 'darts' and clip.

- Overlap 'dart' pieces forming a pillbox hat form. Stitch in place using the extra strong thread. Trim raw edge ½" from top of hat.
- Fit other piece of covered hat wire around the dolls head, where the brim will fit. Overlap wires and wrap thread around the overlapped wire to secure.
- Whipstitch brim hat wire to inside bottom brim of buckram.
- Glue 1" x 9" felt strip to crown of top with ¼" turned to wrong side, and over the top edge.
- On inside of crown, mark front and back of hat with pencil.
- Cut piece of felt to cover top of buckram that is showing. Glue to buckram.
- Cut a slit 1/4" from bottom of crown wire. Cut 1" from center back both directions. (2")
- Hand gather ¼" from the edge of the crown fabric.
- Place over the hat form.
- Pull gathering and ease around front half of hat, securing with 'Dritz clips' starting at the center front down both sides.
- Place glue on TOP front half of inside wire and secure fabric, making sure you are not stretching fabric grain or have any wrinkles. Trim excess close to wire.
- Glue TOP back half of crown above slit on OUTSIDE of felt.
- Pull fabric over the glue.
- Cut the slit in fabric with scissors allowing 1/8" extra to tuck into the slit.
- Glue Bottom back half of crown. Tuck fabric in slit and pull and glue over the brim wire.

Feathers

- Curl feathers (refer to New Technique Section) and arrange on twill tape. Hint: Suggest that they not extend more than 1 ¼" from bottom of twill tape.
- Glue feathers to one side of twill tape. Let dry completely.
- Insert feather twill tape in slot and glue in a few spots to secure.

Lining

- Press ¼" on both sides of 1 ¼" x 9" batiste to WS. Turn under ¼" on one short end. Hand gather on one long side and pull gathering tight. Secure and close the 'center hole' close, if you wish.
- Center with WS of lining on inside top. Carefully glue outer edge of lining to wire edge.

- Take center 'hole' and twist.

Shoe Supplies:

1-2" Styrofoam ball
 4" x 4" Brown leather
 2 ½" x 3 ¾" Pink leather
 1 ½" x 1 ½" Tan sole leather
 2" x 2" Thin cardboard
 Serrated knife
 Leather slicker (optional)
 Pinking shears (optional)
 Dritz clips (optional)

Shoe Instructions

Sole leather

- Trace insole pattern on card, be sure to reverse. Mark the right and left insole.
- Cut out. Place both insoles together and smooth edges with emery board.
- Fit to bottom of doll's foot. Adjust if necessary.
- On wrong side of light brown leather, glue insoles. Trim evenly and fit again to doll's feet.

Forming the wedge form

- Cut 2" Styrofoam ball in half.
- Trim off ¼" on bottom of ball.
- Place wedge pattern on Styrofoam ball and cut. Note: The toe wedge will be rounded from the sole up.
- Place insoles on top of the form and cut for width of each foot and back.
- Even form with you fingers by pressing Styrofoam.

Sole

- Trace sole pattern on wrong side of sole leather with ballpoint pen. Remember to reverse pattern (right and left).
- Cut out. Smooth edges with emery board.
- Fit to bottom of each form.
- Smooth edges with a leather slicker or just dampen edges and rub with finger to smooth edges.

Covering Styrofoam Wedge

- Trace wedge pattern to wrong side of light brown leather. Note: I used the wrong side of leather for the right side to cover the wedge, thus trace on right side of leather.
- Starting at the inside ankle of one foot, place leather in position. Glue both Styrofoam and leather around the back.
- Continue gluing to starting point edge. Trim excess leather even with other edge and finish gluing.
- Beware: Take note of the round toe area, when doing this next step.
- Cut notches (pie shape wedges) into edges of toe and heel areas first, before gluing.
- Glue both side of leather to soles of the wedge. Now glue toe and heel areas making sure edges are smooth.
- Clip leather to within 1/8" of 'L shape' on Styrofoam. Repeat above steps on cutting wedges and gluing.
- Fit soles to bottoms of wedges and glue.

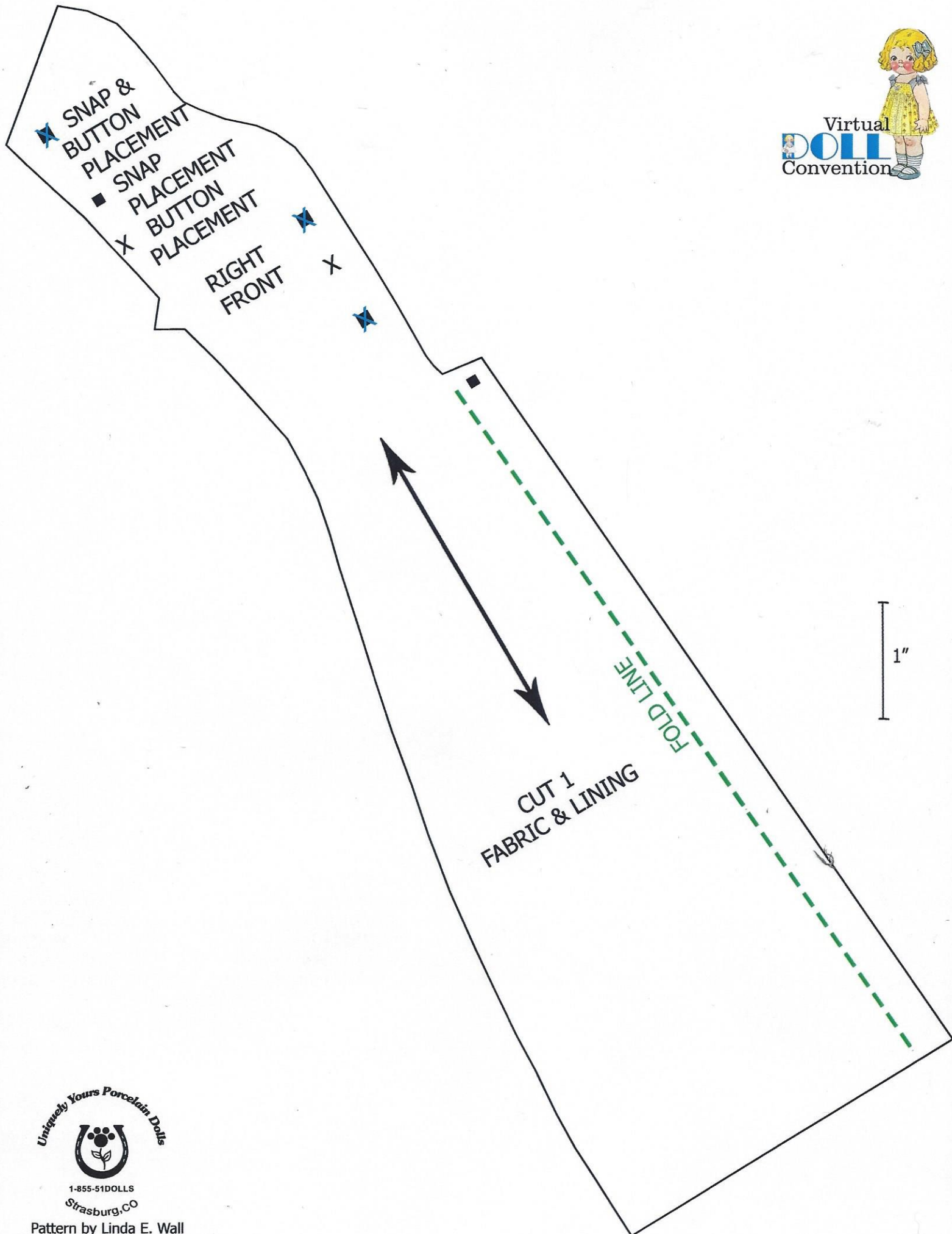
Pink Leather Tops

- Trace top pattern to wrong side of leather with ballpoint pen.
- Option: May machine stitch 1/8" from edge, as indicated on pattern.
- Cut leather.
- WRST stitch ¼" heel seam. Trim seams, glue previous stitching threads above and glue seams flat to leather.
- Make notches around the bottom edge or you may use pinking shears.
- Place insole inside the top of shoe, ¼" from notched edge.
- Starting at the toe, glue bottom of insole and pull ¼" of leather to WS of insole. Secure with clip or hold until dry.
- Glue back of shoe and clip, again only extending ¼" of leather to WS of insole. Ease the rest of the leather and glue to insole.
- Fit shoe on doll. Adjust if necessary.
- Cut a scrap of leather to fit into the 'void center space' on the WS of the insole. Glue to space.
- Glue WS of insole to top of wedge. Hold until glue is secure.
- Fit on doll again and adjust.

Purse

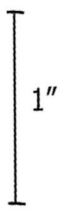
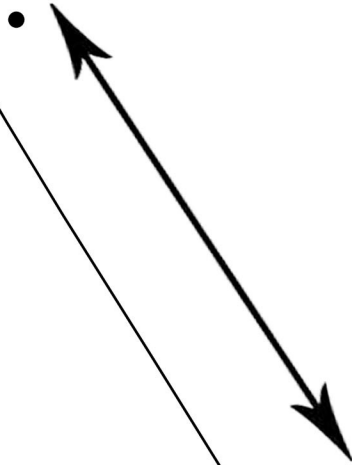
- Trace pattern to wrong side of main color of leather that you wish for the purse. Cut.

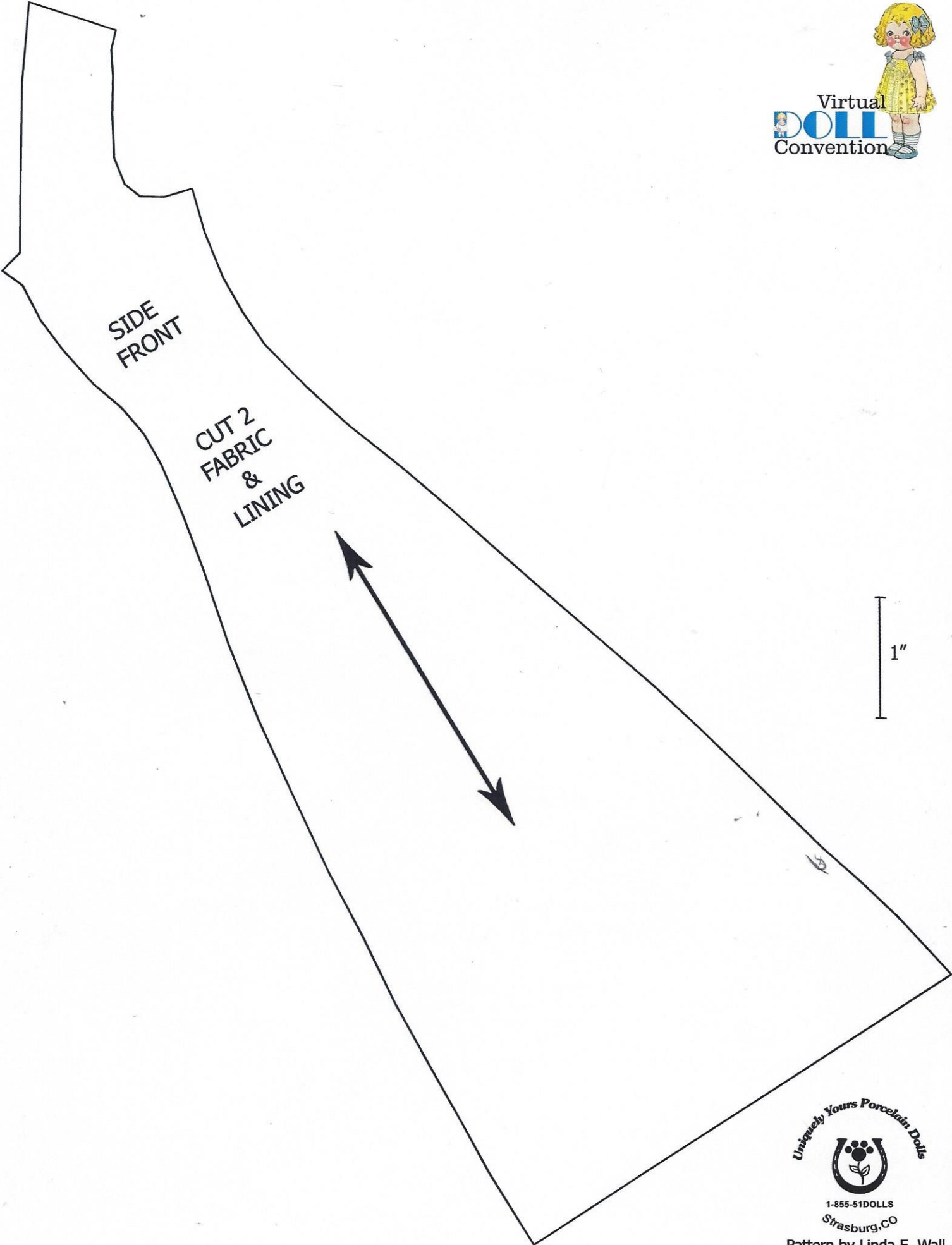
- Glue contrasting color of leather to WS of purse flap as indicated on pattern. Trim within 1/8" from main color of leather.
- Fold to WS as indicated on pattern. Glue inside edges together.

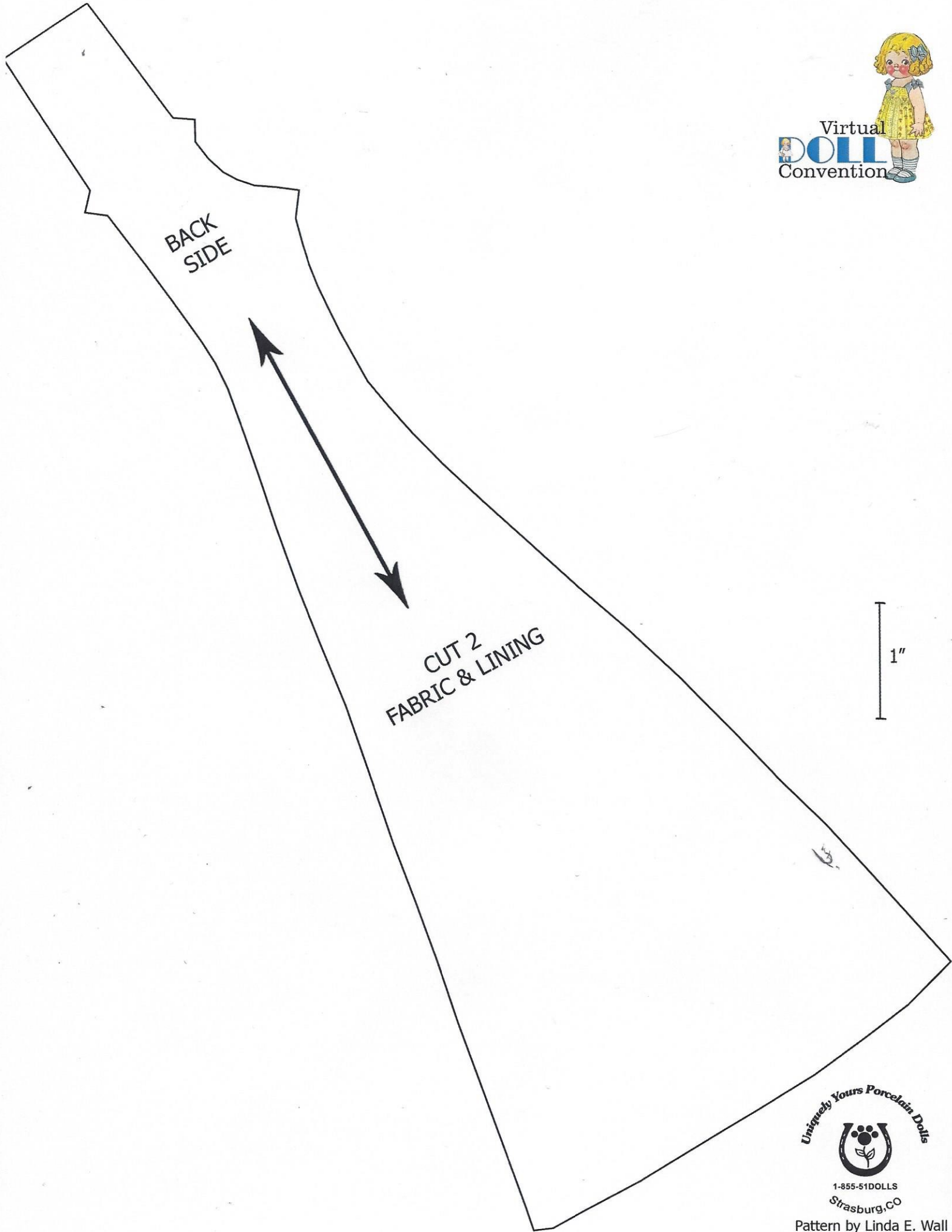


LEFT
FRONT

CUT 1
FABRIC
&
LINING

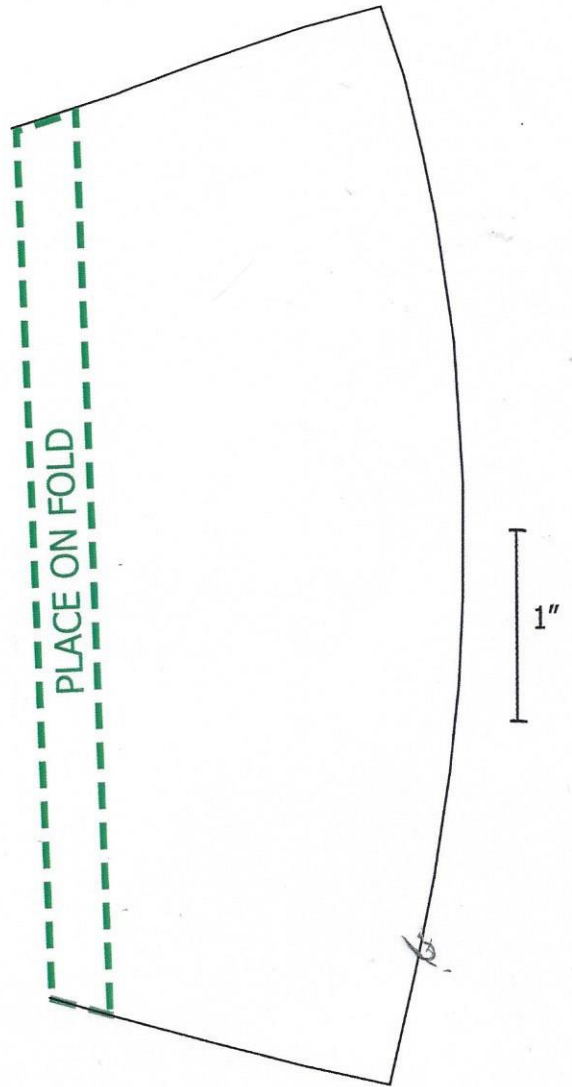
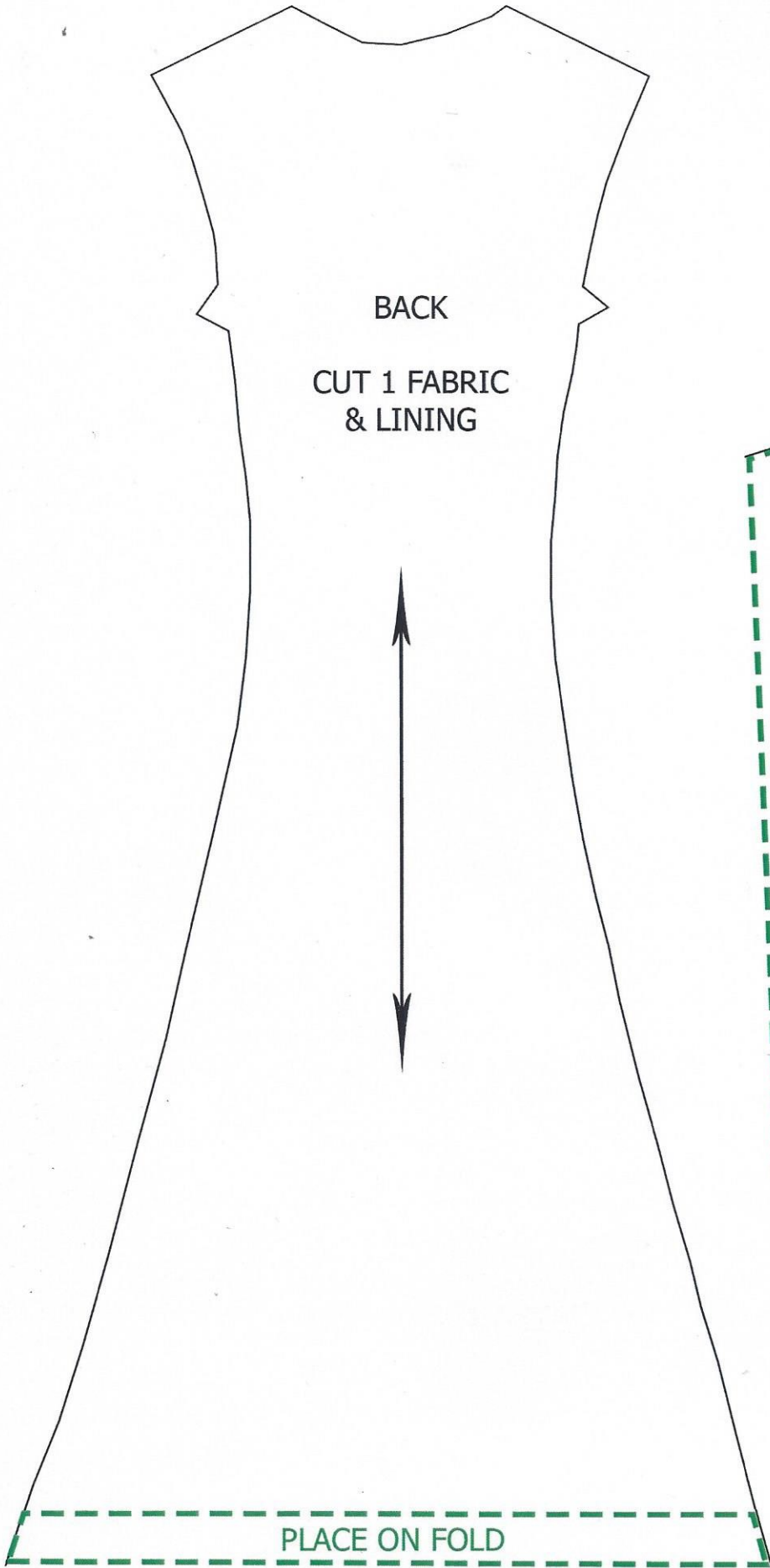






1-855-51DOLLS
Strasburg, CO

Pattern by Linda E. Wall



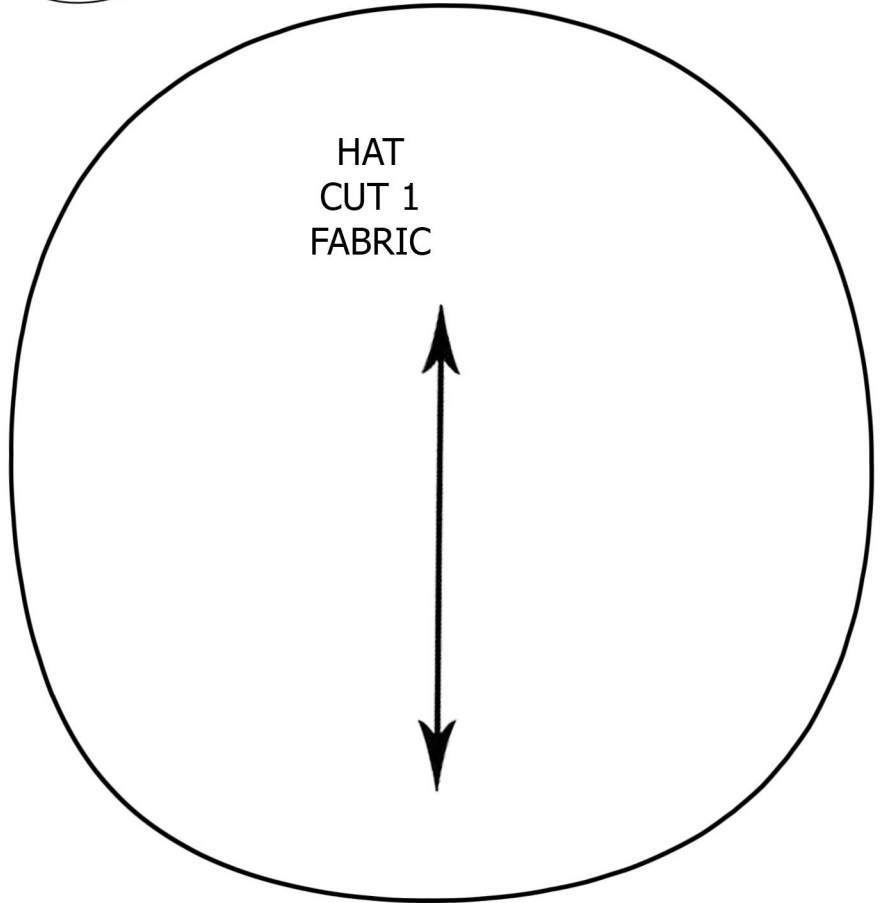
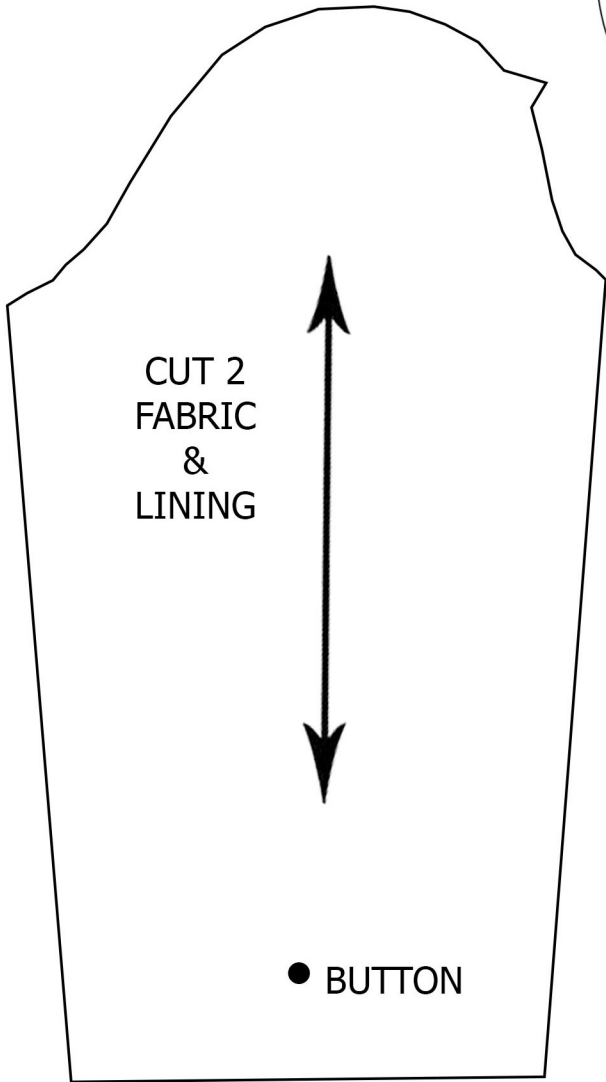


Virtual
DOLL
Convention

HAT
WIRE &
FELT
PATTERN

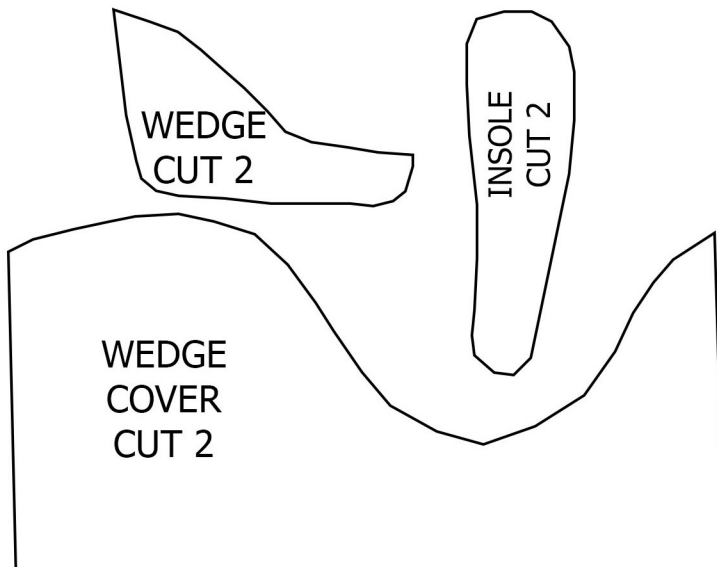
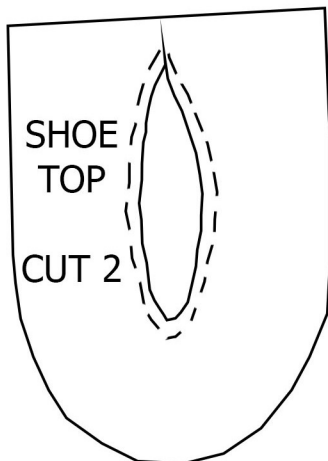
FRONT

1"



CUT 2
REUSE

SOLE



1-855-51DOLLS
Strasburg, CO

Pattern by Linda E. Wall