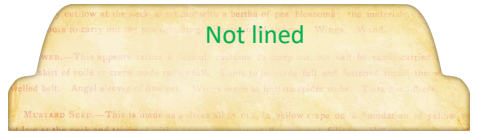
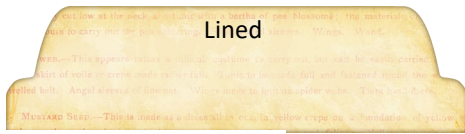


Peplum Suit pattern for Grace Marie Fitzpatrick

(Robert Tonner body 101)

Created for the Virtual Doll Convention by Kathi Mendenhall, ©2020



The inspiration for this pattern came from Duchess of Cambridge and her wearing it for the opening of the New Thiepval Museum on occasion of the 100th Anniversary of the battle of the Somme. It was a somber ceremony. The Duchess wore a new lace suit for the days' events. The dress was made of lace overlaid on black and has a Peter Pan collar, 3/4 length sleeves and a peplum.

Sophie Hallette created the French Lace and tulle, the same provider of the lace on her wedding dress.



Dress (Lined) (for unlined, omit lining fabrics)

1/4 yard, or fat quarter, of Fashion Fabric

1/4 yard of lining, China Silk or Batiste

Lace Dress requirements

1/4 yard of small figured lace to overlay

1/4 yard of china silk or batiste interlining on which to attach lace

1/4 yard of China Silk or Batiste for dress lining

Couture Lace Dress Requirements

1/4 yard of net for lace applique

Lace appliques or fabric for cutting and applique

1/4 yard of matching or contrast China Silk or Batiste for lining.

Notions

Your choice/ 5 hooks and eyes, or 5 hooks plus you make loops.

OR 5 snaps, size 4 or 5

Other items

Scissors, pins and needles, thread and sewing needle, seam gauge or 6" clear ruler, glue, Frixion pen or pencil. Sewing machine (optional)

Please read directions before cutting. Make sure the 1" on the patterns measures 1". Definitions: ALL seam allowances are 1/4" unless stated differently.

Press fabrics before laying out and cutting.

If you are doing a lace overlay, please refer to the techniques listed in the bodice Couture section.

Page 9, column 1 to see example

If you are using a lace overlay, baste the lace to the skirt at the seam lines and treat both fabrics as one.

Page 3 and 6 for example



Some fabric samples :

Polyester lace, and Batiste or Swiss cotton challis

Green silk mini jacquard

Woven "Lace-look" in Rayon mini design.

Directions for Skirt and Lining

Lining Directions (If not lining, overcast seams. Fold hem up twice and hem stitch.)

1. Mark darts and baste seam lines. All seams are 1/4".
2. Sew the darts. *There is an option in the pattern to gather between the darts at waist, pleat the dart area at the waistline and press to side, or sew in the actual dart. The creativity is yours.*
3. Sew the side seams.
4. Sew the back seam between the two dots. The top opening is the center back opening at waistline and the bottom is for the center back split.

**Remember the hem of the lining is 1/2" shorter than the skirt hem.*

5. Check fit of the lining. Transfer all changes to the pattern for the skirt of fashion fabric. Press the seams open. Press the darts to the side. Press the entire center back seam open, along the seam line from waistline to hem.
6. Press up the hem 1/4". Set aside.

The Skirt Directions

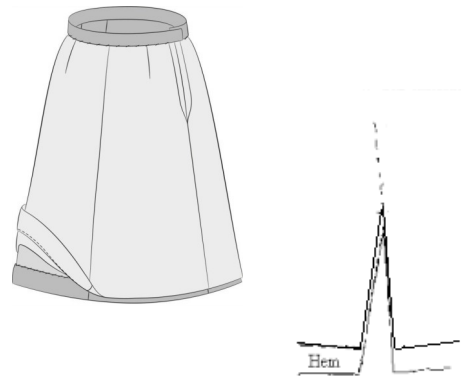
1. Complete the same as lining. Press Darts in opposite direction or toward center. This eases bulk at the waistline.
2. Sew side seams. Press seams open.
3. Sew back seam between dots. Press seams open from waist to hem, quarter inch seam.
5. Press the hem up at the hem marking, approximately 1/2".

Joining the skirt and Lining

1. Turn the fashion fabric skirt inside out.
2. With **wrong** sides together, lining on top, match at waistline, side seams and center back seam. Pin and baste at waistline.
3. Baste waist opening together with lining and fashion fabric even. Complete the kick slit the same. Hemstitch the skirt lining at the hem. The pieces are uneven by design. See Diagram

Add the Waistband. See detailed instructions on following two pages.

When the waistband is complete, add the hook and loop(or eyes) or snaps. ****Notice the swinging snap. Sew on two holes only on the center of the skirt back opening. This helps with keeping the center back from pulling open.**



Waistband whip stitched.

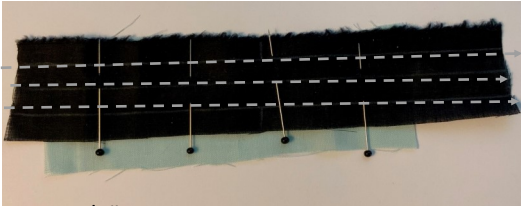
Hooks, Eyes (or loops) OR snaps.



Hem and slit blind stitched.

Waistband Details

*You will notice the back edge of the **waistband is overlong**. This is on purpose as I am dyslexic and have a problem with straight lines and matching the waistline at the center backs. These instructions are how I get the center back to match exactly where they need to be.*



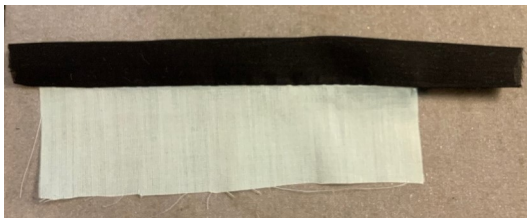
1

Mark 1/4" seams. Lightly press up the lower 1/4". Work from center and allow excess to hang over at ends.



3

Grade the seam (cut one side a little shorter). This lessens the bulk at waist.



5

Turn and work from the right side.



7

Turn edge.



2

Press the seams open.



4

Press the seam toward waistband.



6

Fold back the pressed seam, RST, and stitch at the edge of the seam. Clip to an arrow shape to reduce bulk.



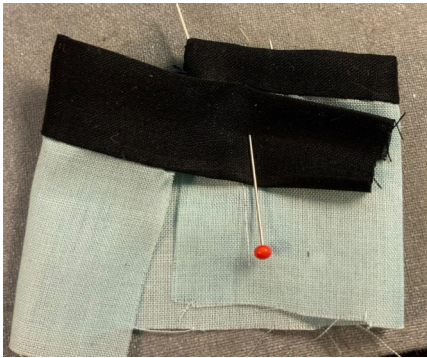
8

Pin the band in place to near the opposite side.

Imagine the back seams is sewn closed. These pictures are a demonstration.

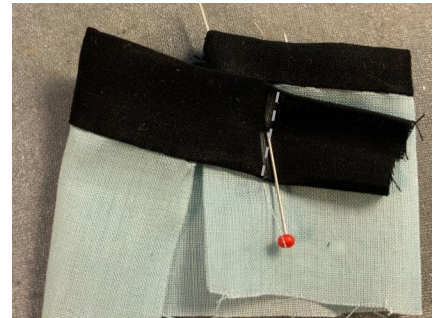
**Also, I used solid fabric for waistband even with lace skirt. It is hidden under the bodice.

Detailed Waistband Directions continued.



9

Measure the amount to cross over for closure.



10

Fold this edge RST, mark where you want the overlap to end. That is your stitching line.

Imagine the back seams is sewn closed. These pictures are a demonstration.



11

Clip excess and trim to a point the edge. Turn it right side out as you did the opposite side.



12

Fold the band to the wrong side and whip stitch the band in place.

Fit to doll and mark the closure placement.

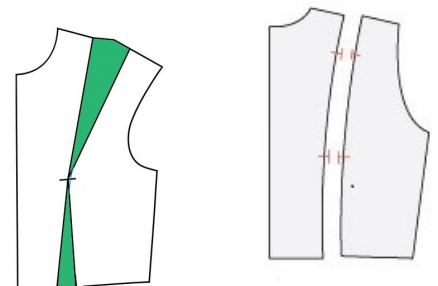
Directions to Make the Bodice

1. Press your fabrics.
2. Cut out each piece separately.
3. Mark all the seam lines, darts and marks for more accurate seaming. This is a form-fitting suit.
4. Pin bodice lining first. Begin with the center front and match bust points with the side fronts. Work pins down from bust point to waist and up from bust point to shoulder. Stitch seam and ease in the curves. Complete both sides. Do not clip curves or press yet.
5. . Pin and then stitch the underarm seams. Sew 1/4" seam. Complete both sides. Wait for pressing.
6. Join back side to center back side easing in the curves. Sew the 1/4" seam. Complete both sides.
7. Before pressing place this bodice on your doll, and examine the fit. Mark and make adjustments, pin shoulders. Sew shoulder seams and press open. When finished clip curves and press the seams open.
8. Transfer any changes to the Fashion Fabrics pieces. (This should fit well, but it is always nice to check a pattern when working with a new one.)
9. Complete the bodice as you did the lining. Checking the seams as you go. Clip curves and press seams open if you are lining the dress.
10. Join the lining to the fashion fabric by placing the RIGHT sides together.
11. Match the shoulder seams, the center back, the center , armholes and side seams, etc., all the way around the outside edges.
12. Sew the two pieces together, sew up one side of back, around neckline to the other side at back. Clip seams and press the seams open.
13. Turn the two bodices right side out and line up all seams. Press together as one.
14. Baste the bottom closed at the waistline.

The sleeves can be completed in two ways. Inset or Flat.

Please fit the garment lining per instructions from 1—8.

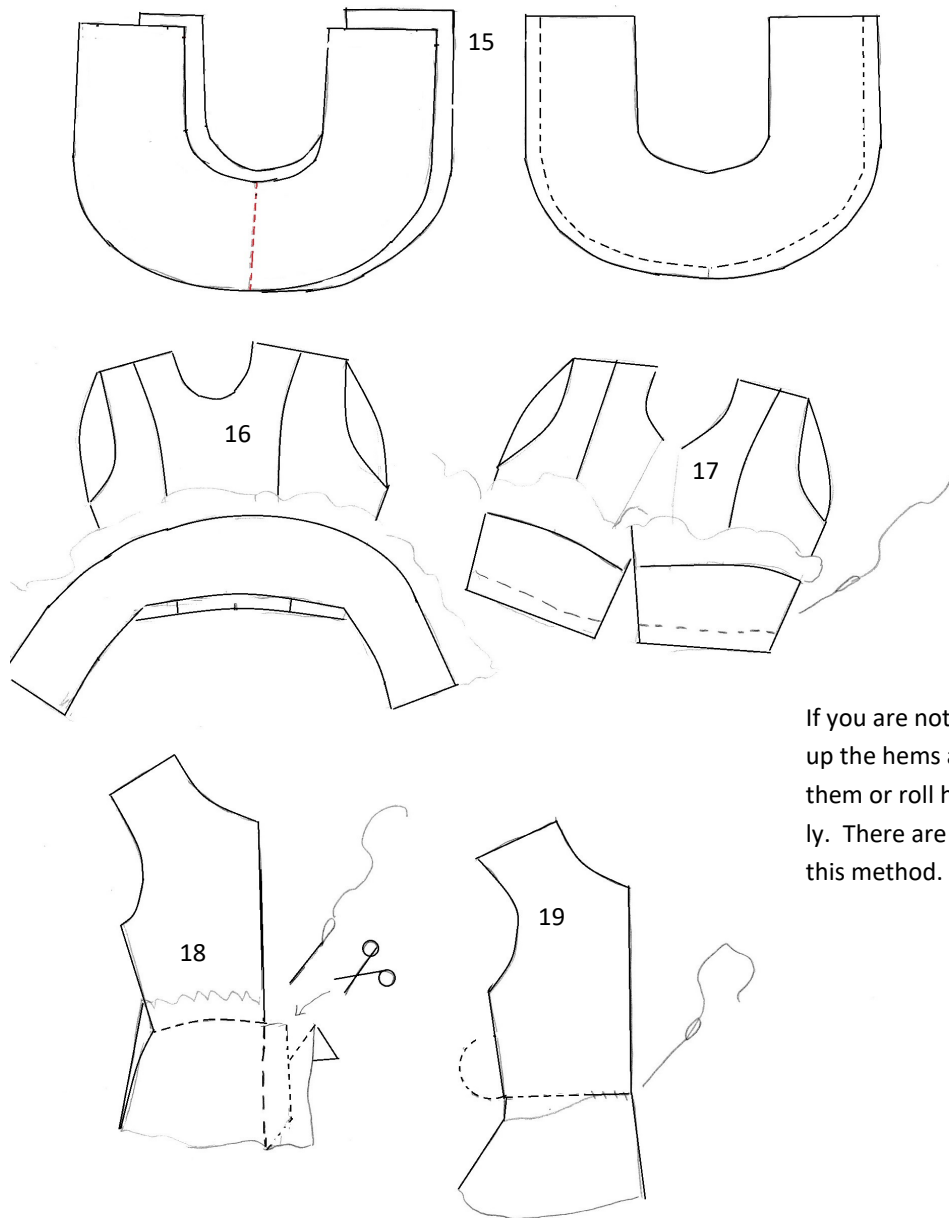
To insert the sleeves see page 7 and get directions for both ways.



Ease in the seams so there are no gathers.

ADDING THE PEPLUM TO THE BODICE.

15. Sew peplum lining to the peplum fashion fabric along the bottom curve. Do not do the sides at this time. Clip seams, press open.
16. Mark the centers. With right sides together, match the center front and pin (leaving the lining free of the pins) to the center back. Finish the other side doing the same.
17. Press the lining portion up with the right sides together and mark where the center back should go from the bodice center back to the bottom of the peplum. (like steps 6 and 7 for the waistband on page 5)
18. Sew this seam. Trim away excess and turn right side out. Complete the opposite side the same and the edges should be straight with the enter back edges. Nothing off kilter there.
19. Clip curves at waistband area of lining, turn under 1/4" seam allowance, hem or blind stitch in place. Press well.
20. Add three snaps or hooks and loops to the center back for closures.

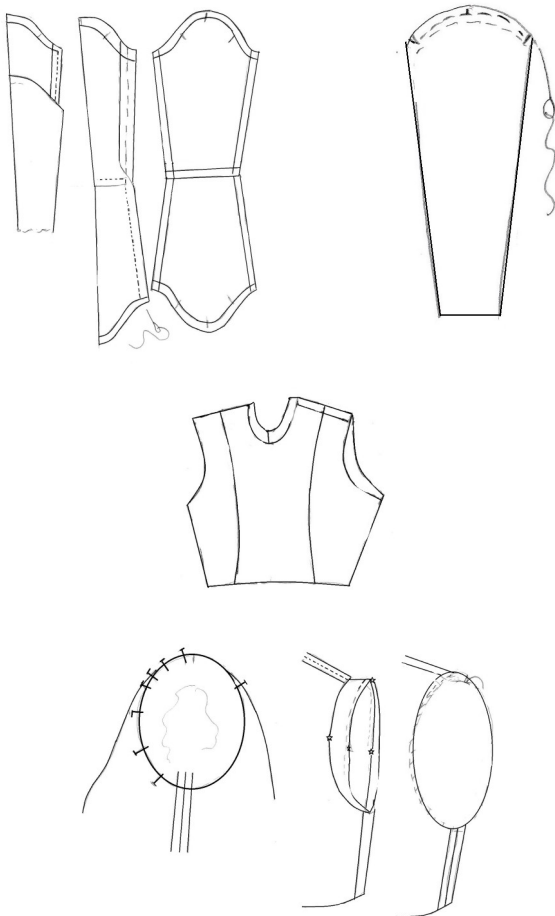


If you are not lining, you will turn up the hems and edges and hem them or roll hem the edges neatly. There are no diagrams for this method.

Inserting the sleeves Method A

(stay stitch the headers around the sleeve top.) Overcast the sleeve to hide the seam. If you are not lining the sleeve. Hem the sleeve neatly.)

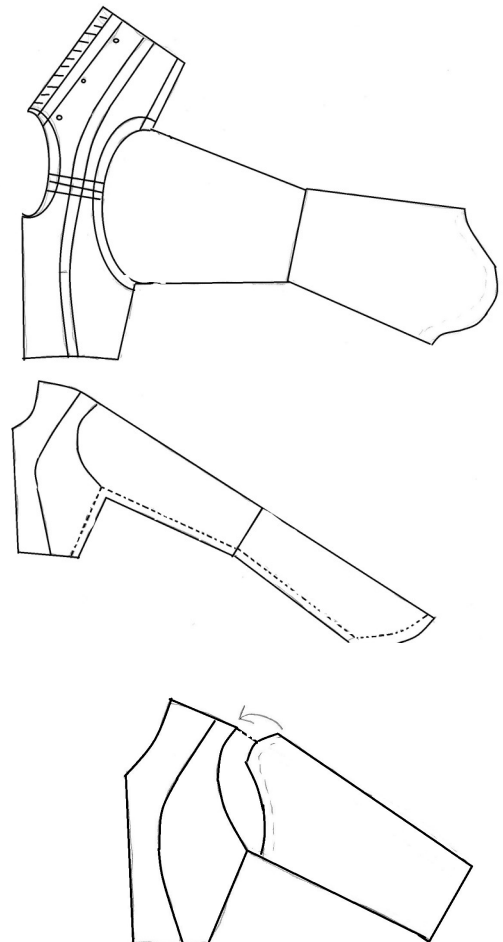
1. Match wrong sides together and stitch 1/4" seam at sleeve hems. (Do not do more as the hands need to pass through the cuffs.)
2. Open up, press seams open.
3. Fold the two pieces together longwise, and seam up the long edges. Press seams open. (Use a dowel to help if you need to get into the sleeve.
4. Turn sleeve right side out.
5. Keep the lining out of the seam. With right sides together, match the center seam and the dots and top of the sleeve easing in the sleeve cap.
6. Sew the sleeve in using some back stitches and regular stitches, use the basing as your guide.
7. Fold up the lining to cover the shoulder seam. Press down the lining along the basing or eased stitches and match along the seam line.



Inserting the sleeves Method B

(stay stitch the headers around the sleeve top.)

1. Match wrong sides together and stitch 1/4" seam at sleeve hems. (Do not do more as the hands need to pass through the cuffs.)
2. Open up, press seams open.
3. Fold the two pieces together longwise, and seam up the long edges. Press seams open. (Use a dowel to help if you need to get into the sleeve.
4. Turn sleeve right side out.
5. With right sides together, match the center seam and the dots and top of the sleeve easing in the sleeve cap.
6. Sew the sleeve in using some back stitches and regular stitches, use the basing as your guide. Keep the lining out of the seam.
7. Fold up press down the lining along the basing or eased stitches and match along the seam line. Overcast the sleeve to hide the seam.



If planning either of these two methods of making the lace overlay, complete the lining instructions as you will need a lining to complete the lace dress.

(or not! This is your creation and you can do as you please.)

A. Lace overlay sewn as an interlined piece. Cut pattern pieces separately. Consider possible cutting of trims to hide seams.

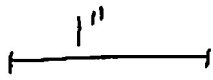
Place bodice pieces of lace together and sew with 1/8" French Seams. Then press seams toward sides.

OR

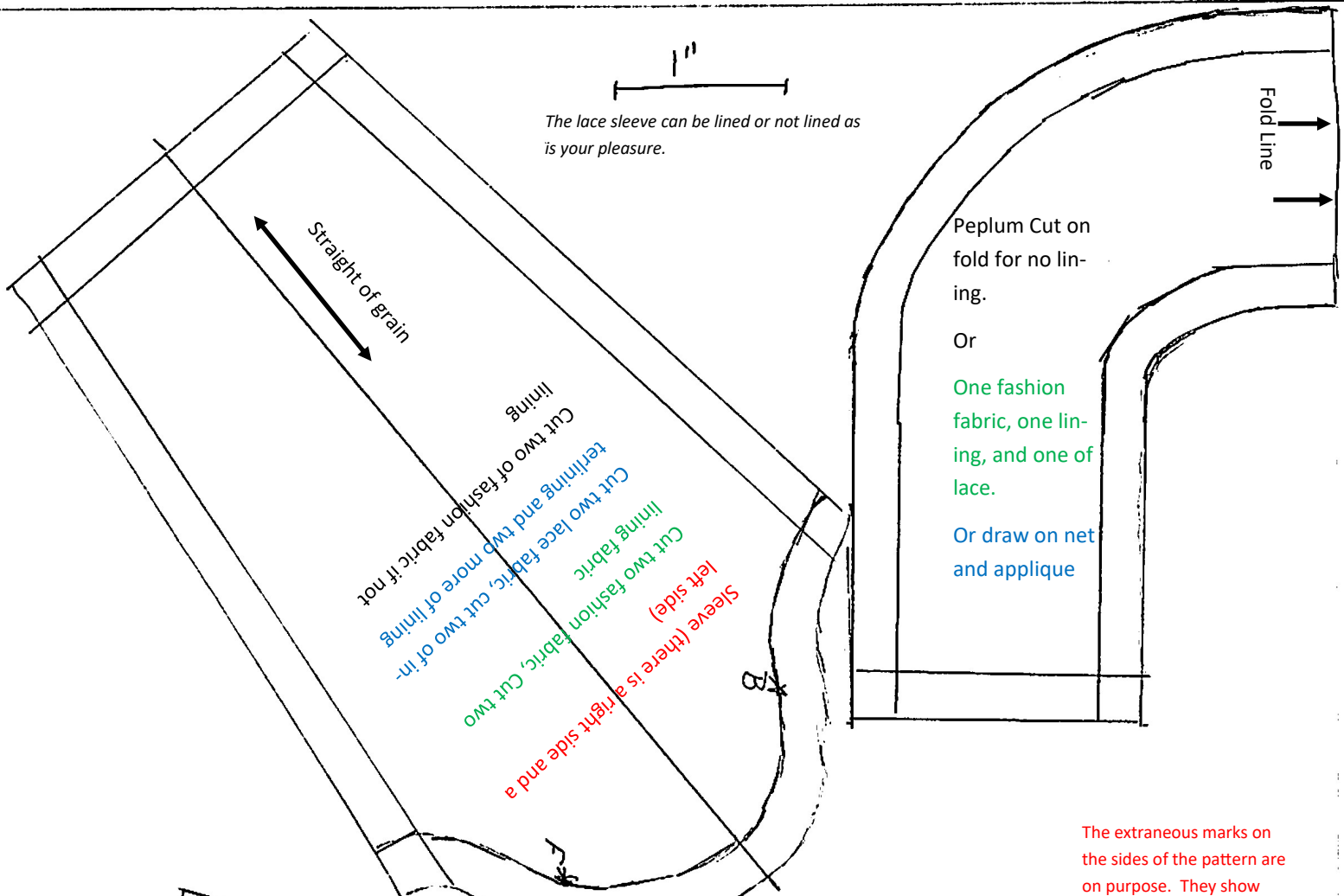
B. for a more couture look, draw the pattern onto net using a Frixion pen. Place net into an embroidery frame. Applique cut outs prettily inside the seam lines. Save pieces to hide seams after sewing in place.

If you are not lining the garment, fold the center back seam of both edges over two times to encapsulate the raw edge and hem the back closed.

Overcast the seams together and press to the sides, or overcast each seam edge and press the seams open for a neatened inside of the garment.



The lace sleeve can be lined or not lined as is your pleasure.



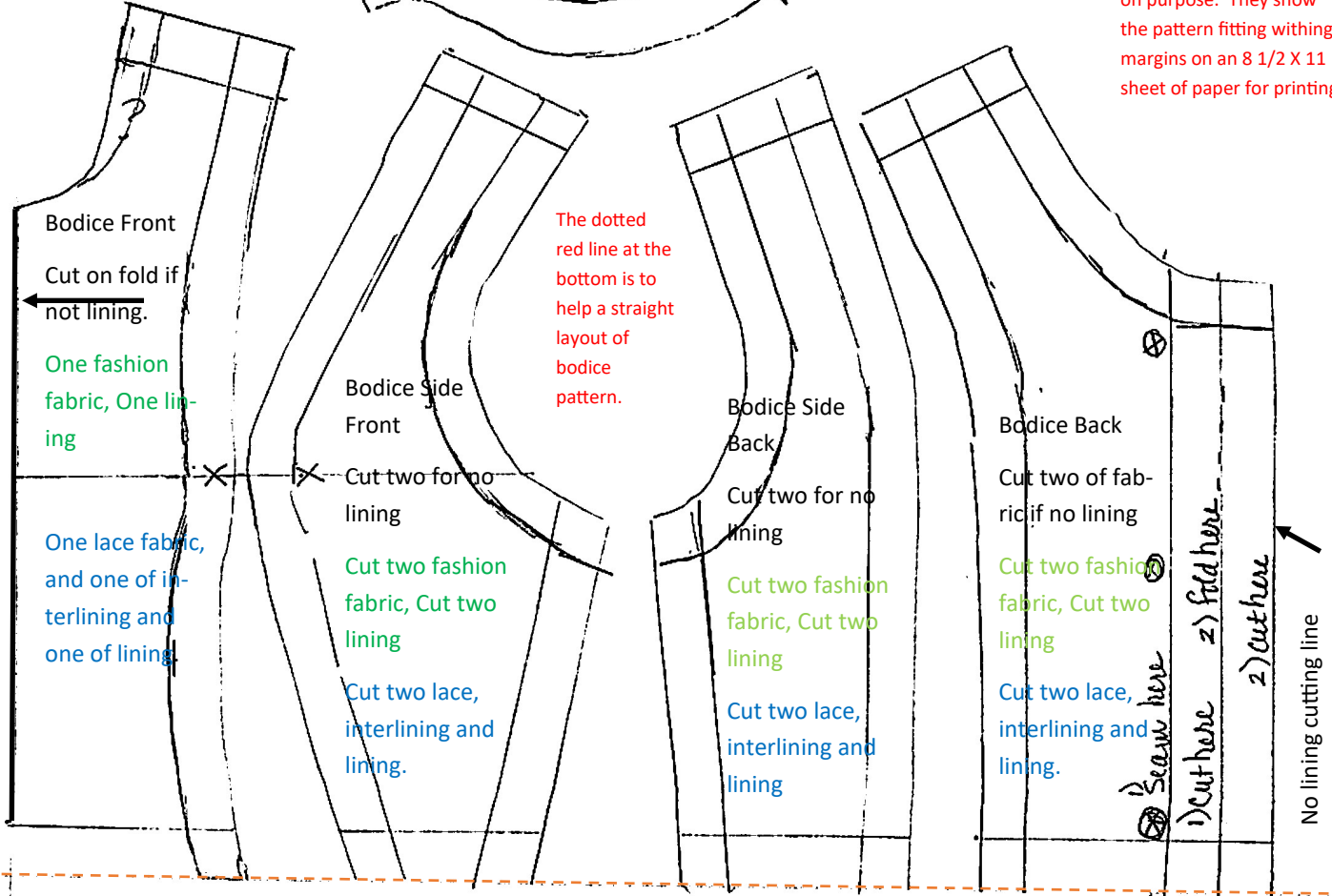
Peplum Cut on fold for no lining.

Or

One fashion fabric, one lining, and one of lace.

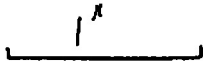
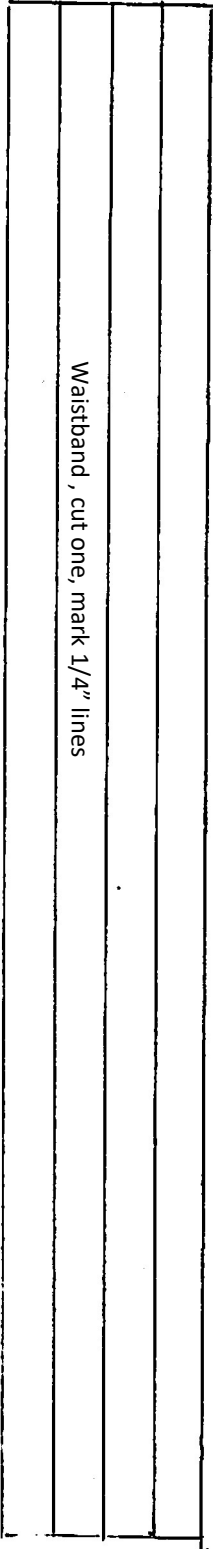
Or draw on net and applique

The extraneous marks on the sides of the pattern are on purpose. They show the pattern fitting with margins on an 8 1/2 X 11 sheet of paper for printing.



The dotted red line at the bottom is to help a straight layout of bodice pattern.

1) Seam here
2) Cut here
3) Fold here
4) Cut here
No lining cutting line



Straight of grain

An orange double-headed vertical arrow pointing up and down, with the text 'Straight of grain' written vertically to its left.

