

Making a Hat and Bag for Grace

By Kathi R. Mendenhall for Turn of the Century Antiques

©2020



Directions and Supplies for completing Hat and Clutch purse for Grace or 16" Fashion Doll

The inspiration for this pattern is from Duchess of Cambridge, "Lion Tamer" hat by Sylvia Fletcher for Locke and Co.

Supplies Needed

The Clutch Style Purse

2 1/2" X 2 1/2" piece of fabric. Stiffen if you think it is needed. Sample purse is of Tarlatan or buckram weight.

1 3/4" X 3/4" of a plain black fabric like Batiste of use the same as purse main fabric. If using something printed or sheer, use an appropriate solid.

2" X 2" piece of Silk or Batiste for a lining

A button or bead, or fancy knot

1" of a thin trim or cording for closure.

Feather—match or contrast (to be trimmed)

Needle and matching thread.

Glue

Supplies Needed

The Hat with Feather

Tarlatan or Buckram— 8" X 16"

Needle and matching thread.

Glue and rubber band

Circle measure or circle stencil

Some round measure, a half Styrofoam ball, a wood circle dome on wood, a carved piece of soft wood, (basswood or balsa). This will be used as a hat form. Can also be of baked polymer clay.

Paint brush for spreading glue.

****Notes.** I made this hat as a comedy of errors; trying many different things . I did not like the results. I do **love** this hat, however I think there are still some improvements to be made.

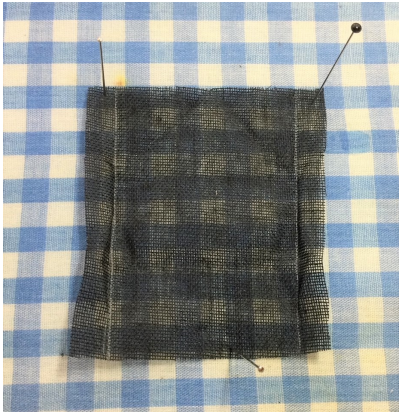
For the hat I would like the brim to be taller in the back, perhaps a little more tall on the sides. (It will look more like the inspiration hat.) To rectify that I have added fabric to the original requirements and will suggest **in red** the solution to that issue in the directions.

Adding a pretty lining for the hat in perhaps China Silk or Batiste to cover any glue that has shown underneath in the stiffening. I will add that step also **in red**.

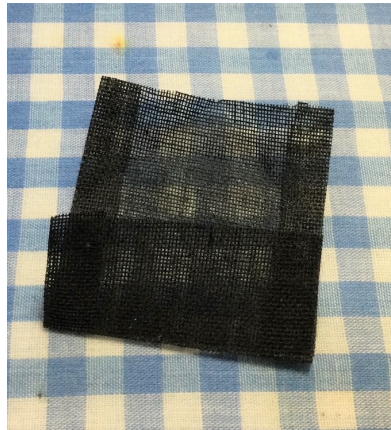
Thank you,

Kathi Mendenhall

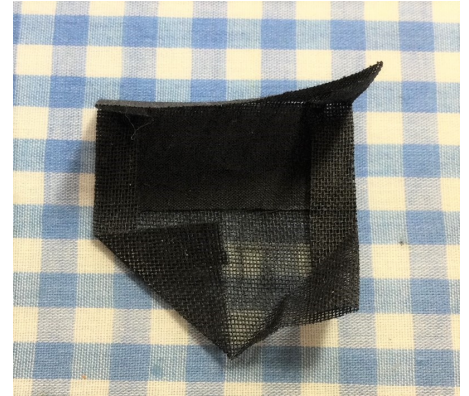
The Clutch Purse



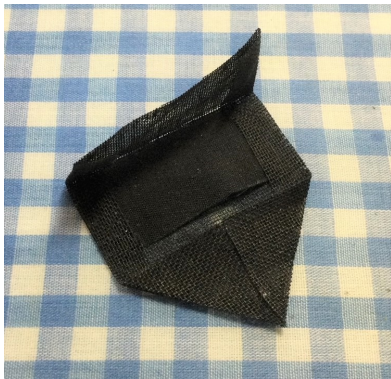
1. Using fabric as described in the supplies, take up the large square.
2. Mark the sides at 1/4", and press to wards center.



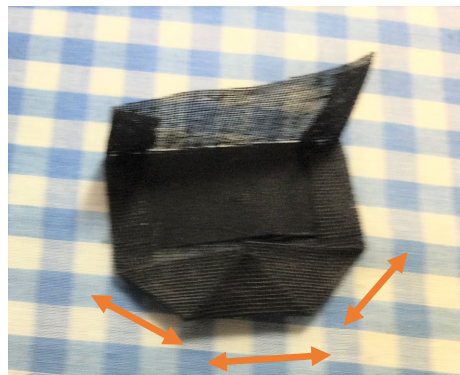
1. Press the top down and open back up.



Pres the top corners down toward the center of the bag, and press both ends in to create a point at the top.



Press the top point in half and you will have a three edged flap.



1. Press the top point in half and you will have a three edged flap.



Measure for your button closure and strap to hold closed. For this I used a bead and some trim. Scant trim about 1". Check your scraps.

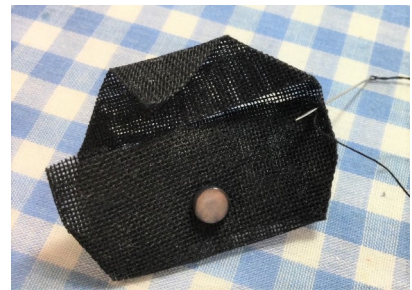
Clutch Purse Continued



Here I pinched in the bottom corners for a softer edge and pressed in place.



The button can be at the bottom or the top flap, do it your way. In the photo it is sewn at the bottom,



Take up a needle and thread and either whip or blind stitch the edges together from bottom to purse opening. This way you can hide the knot.



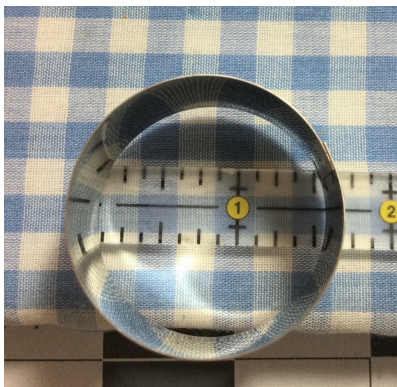
The flap then has the piece of trim glued in place. If you want to fit it from the bottom, use a crochet hook to bring the folded loop out from the inside. Remove from the hook. Measure it around the button. Glue the ends down inside. Trim away excess. Let glue completely dry.



Et Voila!



The Hat



1. Begin with the hat form you chose that is about the size of the doll's head. This one is a bit large, but I was going to be cutting down the hat top anyway. The form you see here is a block of Balsa that has been carved round at the top, and secured to a wooden disk. A piece of plastic wrap is secured over the end of the form to keep glue from sticking.
2. Begin with a 4" (and that is generous) square and lay upon the rounded end. Secure with a rubber band, pulling tightly around to remove as many wrinkles as possible. If you use a Buckram fabric you can wet, and wait for the buckram to hold its shape. I started with a Tarlatan which did not want to hold its form. Thus spreading it with glue.
3. Generously paint glue on the secured fabric and set it aside to dry. It takes a while. Clean your brush.
4. Cut another 4" square of your fabric, and place it over the original fabric. Secure it with a rubber band. Pull tightly to straighten fabric and glue again. Set aside to dry. Clean your brush.
5. While the fabric is drying, use a form or circle template to measure where you want the hat to fit. I had a miniature cookie cutter handy, but circle templates are great.
6. As you can see the circle template was about an inch and a half in diameter. **After making the hat, I think that 1 3/4 or even 2" might make a nicer hat. Play with some scraps while the glue is drying. In next steps some of the fabric will be folded under, and you might like to have more to use.**

The Hat (continued)

7. When the glue is dried, before removing the fabric, trace the circle onto the fabric lightly.

8. Cut below this line about 1/8". This will be used to fold over a wire.

9. Test fit to doll's head and make sure it is the size you would like. (see previous page as I think it would have been great that 1/8" larger.)

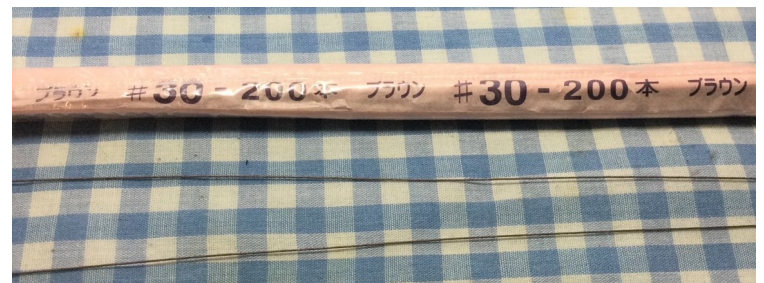
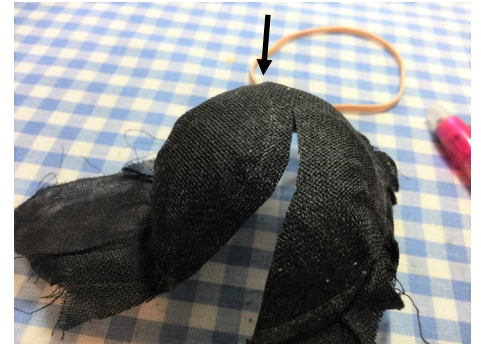
10. You can use any small gauge wire to reinforce the edge. I had these tiny wires available, so pulled two of them. These are used in miniature flower making, and sometimes basket weaving as well.

Wire can be purchased in different sizes and colors from Era Pearce Miniatures, <https://www.pearceminatures.com/shop.php?p=d|sup|WIRE>

You can also purchase the wire here:

<http://www.dragonflyintl.com/shop/contents/en-us/d103.html>

11. I pulled two of the # 30 wires and twisted them together for strength. You can use a larger wire and it will be covered by the fabric anyway. Use what you have.

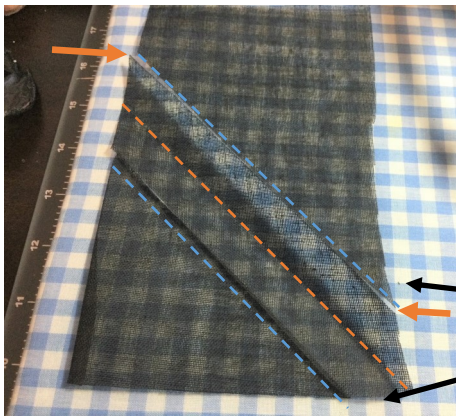


The Hat (continued)



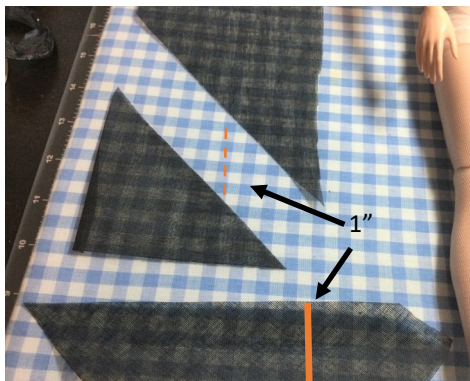
12. Glue the wire to the inside and fold a little edge over it to hold the wires in and finish the raw edges. Set aside to dry.

13. The piece I used to make the brim was 5" by 7 1/2". I folded a bias line and cut above the fold at about 1" from the bottom to close to 1" from the top. Red is the fold line. Blue is the cutting line.



14. You can see the piece removed is about 1" wide. This is where I wanted to insert a note about how I think the hat would be more successful if the back was higher. To achieve that, start with a fold, and cut at the blue line about 3/4" wide. Possibly 1" wide as you can always reduce rather than recut.

15. Finally in the bottom photograph you will see that the bias piece is folded in half again, and a running stitch is sewn about 1/8" from the edge. If you widen your piece, you could also make the stitching reduce toward the edges.



16. Press the stitched



ward the front or towards you for the next steps.

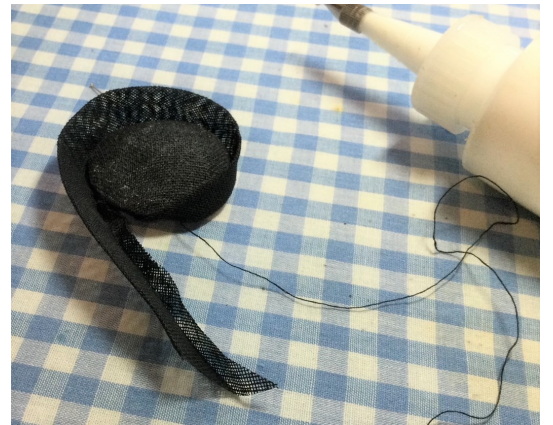


The Hat (continued)

17. Begin at the center back and fit the pressed lip to the inside of the hat top turning all the raw edges to the wrong side. Glue in place or stitch in place. (I do a little of both.)



18. Continue around the hat, pulling the gathering thread to fit as you go, and securing the brim together.



19. When you reach the front the hat will dip and cross over. See the pictures. I have crossed the left as you look at it over the right. Work it down to a diminished edge at the hat front. Glue in place, or sew in place and cut away excess.

20. **Cut a circle about the same size as your original template and sew a running stitch about 1/8" from the edge. Place wrong side into the hat and pull thread to fit to outer edge. Fold under, overcast or slip stitch the lining to the hat top.**



21. Pull a feather, curl it along its shaft (or quill) to shape with the edge of scissors. Do this softly, but in the same fashion as a ribbon. Remove as many barbes of the vane along the bottom to spear it though the brim front.

22. Trim the vanes into short bristle like pieces and pierce the front of the brim.

